

Schlumberger
SIMULTANEOUS COMPENSATED NEUTRON-FORMATION DENSITY

COMPANY CHEVRON USA INC.		WELL BEOWAVE NO. 85-18	LANDER STATE NEVADA
FIELD BEOWAVE GEYSERS		COUNTY NORTHWEST	SECTION 80
TOWNSHIP 10 N. RANGE 18 W.		NEVADA	
Log Measured From	GL 15 ft Above From Datum	Log Measured From	GL 15 ft Above From Datum
Drilling Measured From	KB	Drilling Measured From	KB
Run No.	ONE	Run No.	TWO
Depth	4100	Depth	4100
Depth Interval	4000 - 4100	Depth Interval	4000 - 4100
Top Log Interval	4000	Top Log Interval	4000
Bottom Log Interval	4100	Bottom Log Interval	4100
Coating Log Interval	4000 - 4100	Coating Log Interval	4000 - 4100
Run No.	ONE	Run No.	TWO
Depth	4100	Depth	4100
Depth Interval	4000 - 4100	Depth Interval	4000 - 4100
Top Log Interval	4000	Top Log Interval	4000
Bottom Log Interval	4100	Bottom Log Interval	4100
Coating Log Interval	4000 - 4100	Coating Log Interval	4000 - 4100

The well name, location and borehole reference data were furnished by the customer.

RUN NO.	ONE	TWO	Type Log	Depth
Service Order No.	123994	123980	GR	0-200 0-200 0-150
Fluid Level	FULL	FULL		
Sealinity - FPM CL	30	30		
Speed - F.P.M.*	30	30		

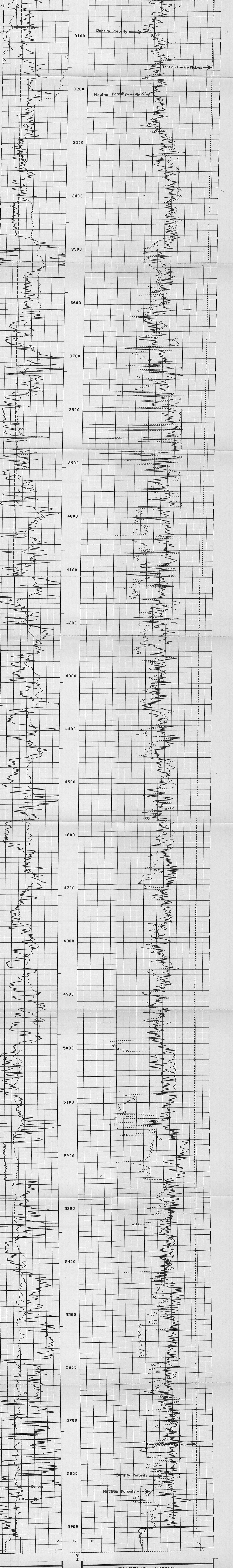
EQUIPMENT DATA	
Dens. Panel	CSU 456
Dens. Corr.	213
Dens. Skid	255
Dens. Sande	4126
Dens. Source	5199
Dens. Calibrator	1241
Neut. Panel	CSU 456
Neut. Corr.	1208
Neut. Source	508
Neut. Calibrator	1192
GR Cart.	466
Memorizer Panel	CSU
Tape Recorder (TR)	
Depth Encoder (DE)	
Pressure Wheel (CPW)	
Centrifizers:	Type E.C.C.
Enter Springs:	No.
Standoffs:	No.
Incline or None:	S. O. - Inches

CALIBRATION DATA	
BKG. CPS	55
Source CPS	214
Sens. Cal	REG 165
T.C. Cal	CSU
Short Spacing - Before Log	RATIO = 2584
Long Spacing - Before Log	RATIO = 1196
Short Spacing - After Log	RATIO = 2586
Long Spacing - After Log	RATIO = 1199
P1 - Before Log	464
P1 - After Log	430
P2 - Before Log	462
P2 - After Log	437

LOGGING DATA														
DEPTH	Top	Bottom	Porosity Scale	CNP	Matrix	Auto Corr. or Hole Size Setting	Porosity Scale	FDC	Liquid Density	Hole Fluid	Sens. Logged	T.C.	Zero Div. Left	Scale
2900	4542	45	-15	LS-OH	AUTO	45	-15	2.71	1.0	L12	200	AUTO	0.200	
4100	5300	45	-15	LS-OH	CSU	45	-15	2.71	1.0	WATER	165	CSU	0.150	

All interpretations are opinion based on references from electrical or other measurements and we cannot and do not guarantee the accuracy or correctness of any interpretation and we shall not accept in the case of gross or willful negligence on our part the liability or responsibility for any loss, costs, damages or expenses incurred or sustained by anyone resulting from any interpretation made by any of our officers, agents or employees. These interpretations are also subject to Clause 4 of our General Terms and Conditions as set out in our current Price Schedule.

CALIPER	DIAM. IN INCHES	16"
GAMMA RAY	API UNITS	200



CALIPER	DIAM. IN INCHES	6"
GAMMA RAY	API UNITS	150

POROSITY INDEX (%) LIMESTONE - MATRIX				
COMPENSATED FORMATION DENSITY POROSITY				
45%	30%	15%	0%	-15%
COMPENSATED NEUTRON POROSITY				
45%	30%	15%	0%	-15%

COMPANY	CHEVRON U.S.A., INC.	SCHL. FR.	5926
WELL	BEOWAVE NO. 85-18	SCHL. TD.	5927
FIELD	BEOWAVE GEYSERS	DRR. TD.	5927
COUNTY	LANDER	STATE	NEVADA
		Elev.	4935
		DF.	-
		GL.	4920