

# Schlumberger

## WITH LINEAR CORRELATION LOG

**COMPANY** CHEVRON USA INC.  
**WELL** BEOWAWE NO. 85-118  
**FIELD** BEOWAWE GEYSERS  
**COUNTY** LANDERS **STATE** NEVADA

**FORMATION** DOMINION  
**DATE** 3-18-80  
**LOGGING UNIT** DHE  
**LOGGING NUMBER** 5920  
**LOGGING DATE** 3-18-80  
**LOGGING TIME** 07:15  
**LOGGING LOCATION** 210 @ 60 @ 0105 @ 0005 @ 2321 @ 4100 @ 3937 @ 2935 @ 2935 @ 2935

**LOGGING UNIT** DHE  
**LOGGING NUMBER** 5920  
**LOGGING DATE** 3-18-80  
**LOGGING TIME** 07:15  
**LOGGING LOCATION** 210 @ 60 @ 0105 @ 0005 @ 2321 @ 4100 @ 3937 @ 2935 @ 2935 @ 2935

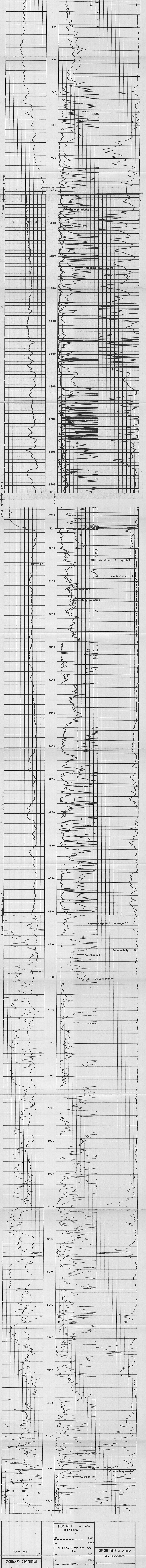
The well name, location and borehole reference data were furnished by the customer.

Run No.	TIME	THREE	FOUR	SCALE CHANGES
Service Order No.	123942	123833	123994	123980
Fluid Level	FTBL	FTBL	FTBL	
Salinity ppm-cl	6.0	6.7	6.0	6.0

EQUIPMENT DATA		REMARKS	
Panel No.	BB-384	B04	
Cartridge No.	DA-217	B17	
Sonde No.	CA-155	B15	
Mem. Panel No.	---	PSU	
G & Cart No.	---	---	
Topo Recorder - (TR)	---	---	
Depth Encoder - (DE)	---	---	
Pressure Wheel - (CPM)	---	---	
Type Centralizers	FIN	FIN	
Stand Off - Inches	45	45	

CALIBRATION DATA		LOGGING DATA	
SBR	1.0	1.0	1.0
Sonde Error - ILM	3.33	5.13	4.09
Sonde Error - ILD	5.64	4.53	5.25
G.R. BKG - CFS	---	---	2.0
G.R. Source - CFS	---	---	19.5
S.E. Set in Hole - Depth	---	---	---
S.E. Corr. - Hole Size	---	---	---

SPONTANEOUS POTENTIAL		RESISTIVITY		CONDUCTIVITY	
MILLIVOLTS		OHMS. M./M. DEEP INDUCTION $R_{hd}$		MILLIHOMS/M. DEEP INDUCTION	
0 100 200 300 400		0 100 500 1000		0 100 500	
SPHERICALLY FOCUSED LOG $R_{st}$		AM.P. SPHERICALLY FOCUSED LOG			
0 100 200		0 100 20			



COMPANY	CHEVRON USA INC.	SCHL. FR	5924
WELL	BEOWAWE NO. 85-118	SCHL. TD	9930
FIELD	BEOWAWE GEYSERS	DRLR. TD	5927
COUNTY	LANDERS	STATE	NEVADA
		Elev.	K8 4035
		DF	---
		GL	4920