

**SIMULTANEOUS
COMPENSATED NEUTRON-
FORMATION DENSITY**

Schlumberger

COMPANY: CHEVRON USA, INC.
WELL: BEOWAVE NO. 85-18
FIELD: BEOWAVE GEYSERS
COUNTY: LANDER STATE: NEVADA
LOCATION: 2960 SOUTH & 80 WEST FROM THE NORTHWEST CORNER OF:
LOGGING NO. 18 TRIP 31N
DATE: 5-11-80
LOG MEASURED FROM: 1.5 ft. Above Perm. Datum
DRILLING MEASURED FROM: KB
ELEVATION: 4920
ELEV. K.B.: 4935
ELEV. G.I.: 4920

The well name, location and borehole reference data were furnished by the customer.

RUN NO.	ONE	TWO
Service Order No.	123994	123980
Fluid Level	FULL	FULL
Solubility, PPM CL		
Speed - F.P.M.	30	30

EQUIPMENT DATA

Dens. Panel	CSU	456
Dens. Cart	213	
Dens. Stand	255	
Dens. Stand	472	
Dens. Source	5199	5146
Dens. Calibrator	1241	1105
Neut. Panel	CSU	456
Neut. Cart	1208	1420
Neut. Source	508	
Neut. Calibrator	1192	1446
GR Cart	--	466
Memorizer Panel	--	CSU
Type Recorder (TR)	--	--
Depth Encoder (DRE)	--	--
Pressure Wheel (CPW)	--	--
Centralizers	Type	ECC
Filter Spring	Type	5.0
Standoffs	Size	
Isoline or Non-S.O.	inches	11

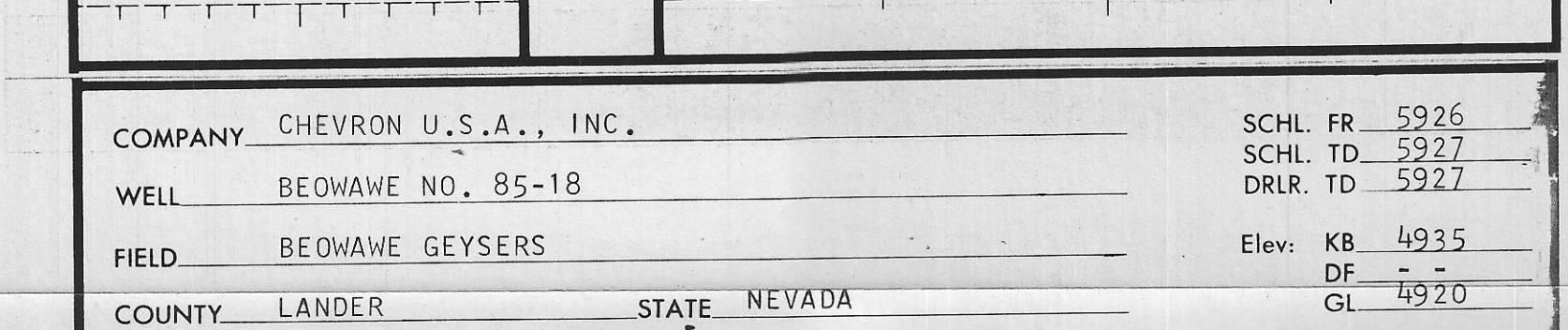
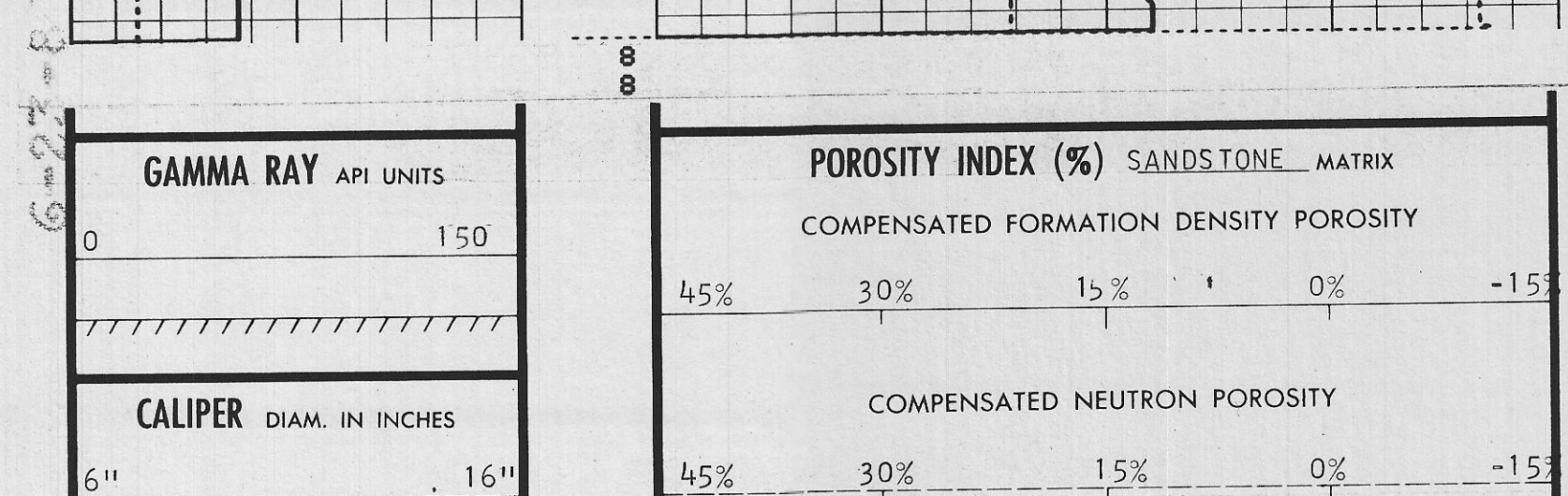
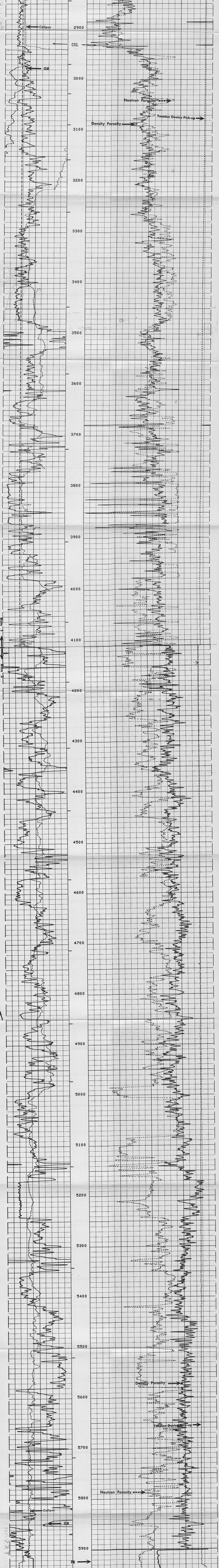
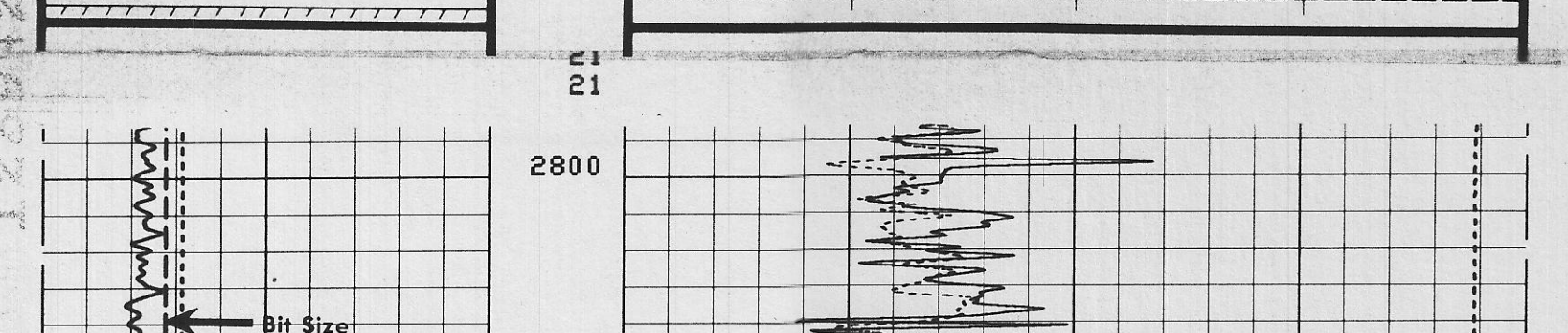
CALIBRATION DATA

BKG. CPS	55	89
Source CPS	214	210
Sens. Cal	REG	165
T.C. Cal	CSU	
Short Spacing - Before Log	RATIO=	2584
Long Spacing - Before Log	RATIO=	1196
Short Spacing - After Log	RATIO=	2586
Long Spacing - After Log	RATIO=	1199
P1 - Before Log	72	
P1 - After Log	430	
P2 - Before Log	462	
P2 - After Log	723	
P3 - Before Log	815	
P3 - After Log	432	

LOGGING DATA

DEPTH	CNP	FDC	GR
Top	Bottom	Porosity Scale	Matrix
2900	4542	45 -1.5	SS-OH
4100	5300	45 -1.5	SS-OH

All interpretations are opinions based on inferences from electrical or other measurements and we cannot and do not guarantee the accuracy or correctness of any interpretation and we shall not accept in the case of error or willful negligence on our part, be liable or responsible for any loss, cost, damages or expenses incurred or sustained by anyone resulting from any interpretation made by any of our officers, agents or employees. These interpretations are also subject to Clause 4 of our General Terms and Conditions as set out in our contract Form 3499-00.



COMPANY: CHEVRON U.S.A., INC.	SCHL. FR: 5926
WELL: BEOWAVE NO. 85-18	SCHL. TD: 5927
FIELD: BEOWAVE GEYSERS	DLR: TD: 5927
COUNTY: LANDER STATE: NEVADA	Elev: KB: 4935
	DF: 4920