

GEO THERMAL DATA LOG

GL04945.2

Company GEO THERMAL ENERGY PARTNERS LTD.

Well Name AIDLIN #6 SIDETRACK (FORK)

Field GEYSERS

County SANDRA **State** CALIFORNIA

Location 3630'N 4685'W of SE CORNER

Elevation 1258' ± 29' to KB

Contractor/Rig NCA #1

Spud Date 1/24/89 **Vertical Date** 3/29/93

TD 11,345' **True Vertical Depth** 10,711'

Bottom Hole Location 899.30'S, 2102.12'W

Well Status Producing

Company Representative DOUG GUINN

HOLE SIZE CASING

26" at 603' 20" at 998'

17.5" at 4888' 13.38" at 4788'

12.25" to 7860' 9.63" at 7860'

8.50" to 11345'

STEAM ENTRIES

8170' 5.97' F 10077' 0.0' F

8695' 4.21' F 10134' 0.0' F

8707' 11.17' F 10397' 10.6' F

8711' 4.4' F 10398' 10.6' F

8766' 3.2' F 10414' 4.6' F

9101' 4.4' F 10420' 2.6' F

9644' 2.2' F 10500' 2.6' F

9724' 2.54' F 10563' 0.0' F

9880' 4.4' F 10693' 0.0' F

9950' 4.4' F 10780' 2.6' F

9984' 12.8' F 11096' 1.54' F

10013' 28.11' F 11106' 3.54' F

10045' 6.11' F 11301' 3.9' F

LITHOLOGY SYMBOLS

Clay

Graywacke Type 1

Graywacke Type 2

Graywacke Type 3

Chert

Greenstone

Basalt

Quartz

Serpentine

Amphibole

Pyrite

Pyrrhotite

Pyrrhotite when >10X

LOG SYMBOLS

Wireline Log

Steam/Water Entry

Deviation Survey

Casing Show

Griffice/Flow Test

Cored Interval

Recess

LOGGED INTERVAL

Date Logged 3/9/93 to 3/29/93

Depth Logged 7,880' to 11,345'

Mud Drilling 7,880' to 7,965'

Air Drilling 7,966' to 11,345'

Temperature Measurement Type T-TYPE IN THE HOUSING

Log Scale 1:600

Log Prepared By LES DRAKE

DOUG GOODWIN

REMARKS

7949' Lossing 200' bbls/hr

ABBREVIATIONS

NS New Bit

RWB Re-run Bit

CB Core Bit

WOB Weight On Bit

SPM Strokes/Minute

DMT Bottom Hole Temp

CBM Carbide Test

DMT Carbide Test

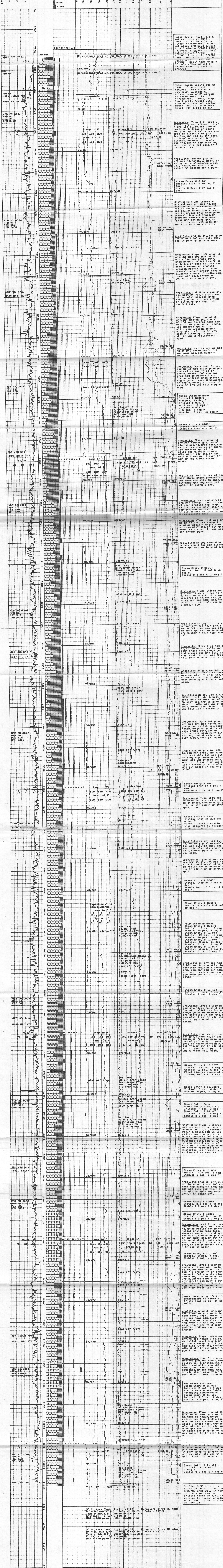
LAT Logged After Trip

CPM Carbide Test

GEO THERMAL DATA LOG

Geothermal Energy Partners/GeothermEx AIDLIN #6 ST

Scale 1 : 600



3" Griffice Test: AIDLIN #6 ST Duration: 5 hrs, 38 mins
 W = 87.555 g/hr Pavg = 112.98 Paia = 187.1
 Temp = 364.8 F Substrate = rd, 8 F
 Entropy = 1.989 Btu/lb °F
 HSE = 566 ppm HSE = 24.38 g/hr

4" Griffice Test: AIDLIN #6 ST Duration: 2 hrs, 38 mins
 W = 87.555 g/hr Pavg = 112.98 Paia = 187.1
 Temp = 364.8 F Substrate = rd, 8 F
 Entropy = 1.989 Btu/lb °F
 HSE = 566 ppm HSE = 24.38 g/hr