



**CEMENT BOND WITH WAVE TRAIN DISPLAY**

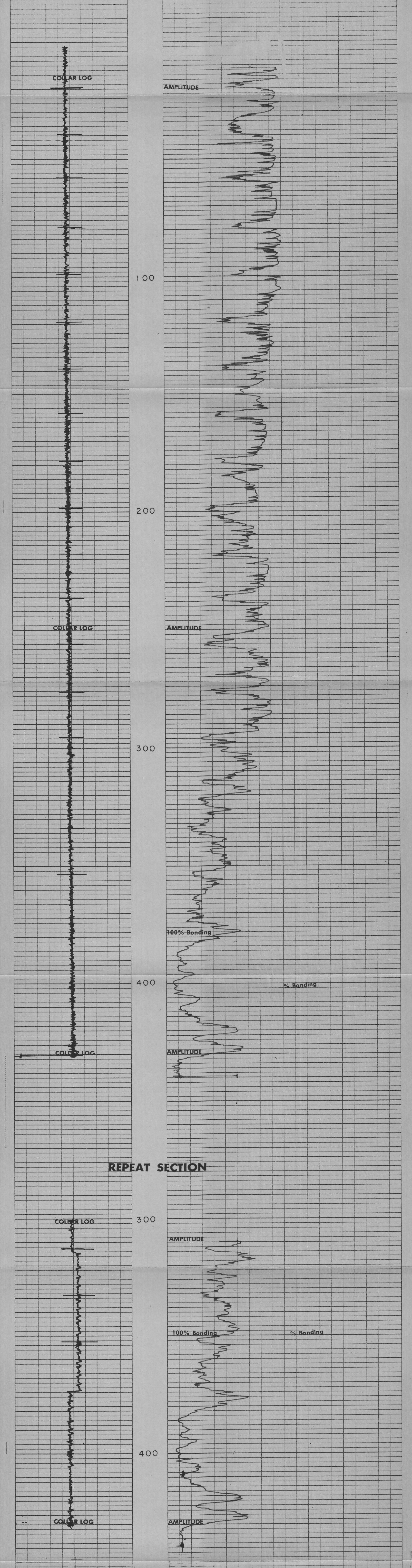
FILE NO.	COMPANY	AMAX EXPLORATION INC.
WELL	66-8	
FIELD	MCCOY	
COUNTY	CHURCHILL	STATE
LOCATION		NEVADA
OTHER SERVICES:		
DATE	11-10-79	
PERMANENT DATUM	G.L.	ELEV. K.B.
LOG MEASURED FROM	G.L.	ELEV. D.F.
DRILLING MEASURED FROM	G.L.	ELEV. G.L.
Run No.	006	Type Fluid in Hole
Depth—Driller	500'	Dens. Visc.
Depth—Logger	438'	Max. Rec. Temp.
Btm. Log Interval	430'	Equip. Location
Top Log Interval	50'	Recorded By
Open Hole Size		Witnessed By
CASING REC.	Size 8 5/8	Grade
Surface String		Type Joint
Prod. String		Top Bottom
Liner		Surface

COMPRESSIVE STRENGTH (p.s.i., Curing Temp.)			
Time Elapsed	Surface	Protective	Production
24 hrs.	°F	°F	°F
48 hrs.	°F	°F	°F
72 hrs.	°F	°F	°F

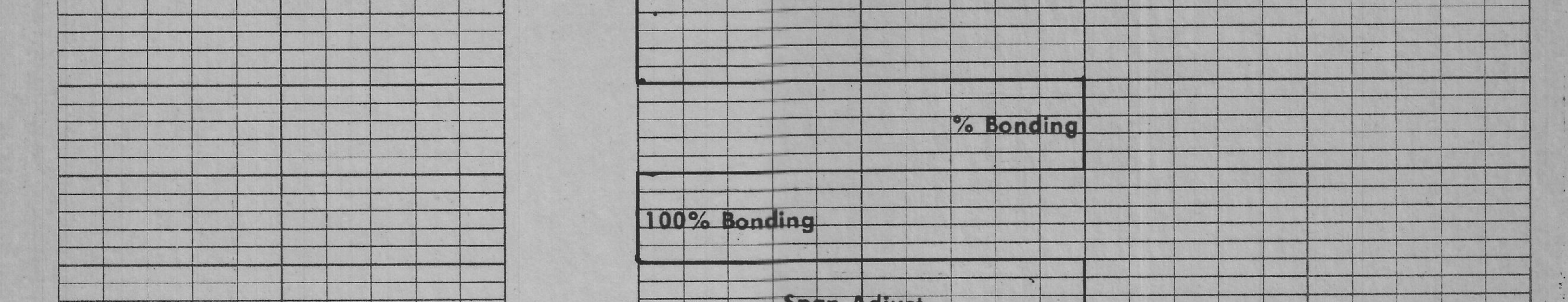
PRIMARY CEMENTING PROCEDURE			
Hour — date	Hours from start of operation	Run No.	Bond Equipment Data
Started pumping cement			Type standoff RUBBER CENT
Plug on bottom			Logging speed 30 FPM
Release pressure			Sig. Sen.
Start Cement Bond Log			Out. Sen.
Finish Cement Bond Log			T-R Spacing
			Tool Type 3 1/4 OBL

Preceding fluid \_\_\_\_\_ Volume \_\_\_\_\_ bbls. Pipe reciprocated during Pumping: Yes \_\_\_\_\_ No \_\_\_\_\_  
 Returns: Full \_\_\_\_\_ Partial \_\_\_\_\_ None \_\_\_\_\_ Pipe reciprocated after plug down: Yes \_\_\_\_\_ min., No \_\_\_\_\_

**AMPLITUDE CURVE**



**CALIBRATION**



**PEN SPACING CHECK**

