

COMPANY: AMAX EXPLORATION INCORPORATED OPERATOR  
 WELL: 66-8  
 FIELD: MCCOY PROPERTIES-WILDCAT  
 COUNTY: CHURCHILL STATE: NEVADA  
 Location: 1347.64' NORTH & 3353.06' EAST OF THE SOUTHWEST CORNER (MDN)  
 Sec: 8 Twp: 22N Rge: 40E Elev: 5795  
 Permanent Datum: G.L. Elev: 5795  
 Log Measured From: G.L. F. Above Perm Datum D.F. 5795  
 Drilling Measured From: G.L. G.L. 5795

Date: 3-18-80  
 Run No: ONE  
 Depth—Driller: 2510  
 Depth—Welex: 2478  
 Btm. Log Inter.: 2478  
 Top Log Inter.: 702  
 Casing—Driller: 6 5/8 @ 704  
 Casing—Welex: 702

Type Fluid in Hole: CLAY BASE &  
 Bt Size: 6  
 L.C.M.:  
 Dens. 1 Visc.:  
 pH 1 Fluid Loss: N/A I N/A  
 Source of Sample: P1T  
 R<sub>int</sub> @ Meas. Temp.: 26.4 @ 58 °F  
 R<sub>mc</sub> @ Meas. Temp.: N/A @ N/A °F  
 Source R<sub>int</sub> R<sub>mc</sub>: MEASURED  
 R<sub>int</sub> @ BHT: N/A @ N/A °F  
 R<sub>mc</sub> @ BHT: N/A @ N/A °F  
 Time Since Circ.:  
 Max. Rec. Location: 210 °F @  
 Equip. Location: 8366 TALKER, R. DOVE  
 Witnessed By: J. GRONSS

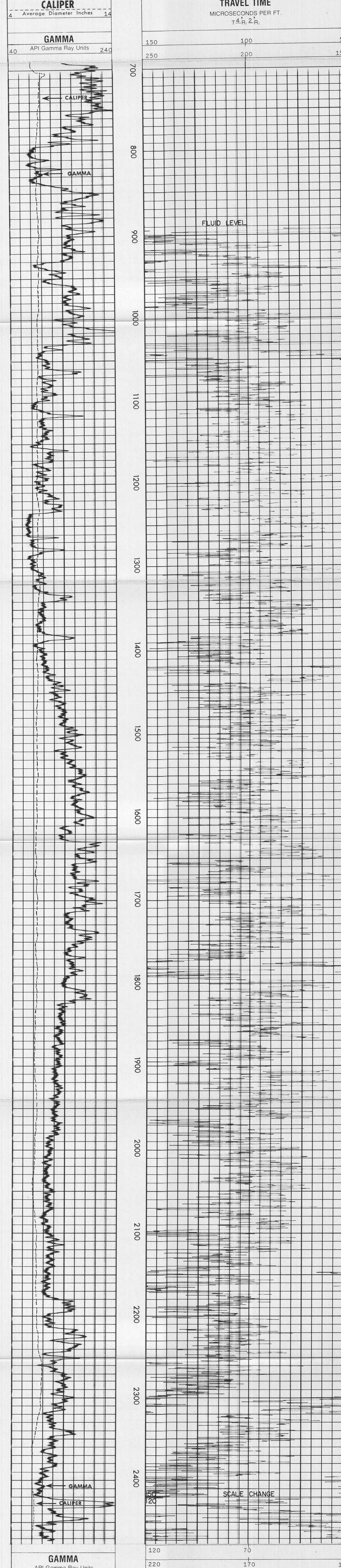
Service Ticket No. 055289 Remarks:

Change in Mud Type or Additional Samples		SCALE CHANGES		
Date	Sample No.	Type Log	Depth	Scale Up Hole
		AVL	2420	50-150
Type Fluid in Hole				Scale Down Hole
				20-120

EQUIPMENT DATA				
Run No.	Tool Type and No.	Pad Type	Tool Position	Other
ONE	AVL-26249		FREE	6" HOLE

LOST CIRCULATION

Welex does not guarantee the accuracy of any interpretation of log data, conversion of log data to physical rock parameters, or recommendations which may be given by Welex personnel or which may appear on the log or in any other form. Any user of such data, interpretations, conversions, or recommendations agrees that Welex is not responsible, except where due to gross negligence or willful misconduct, for any loss, damages, or expenses resulting from the use thereof.



GAMMA		TRAVEL TIME	
40	240	120	220
		70	20
		170	120

GAMMA		TRAVEL TIME	
40	240	120	220
		70	20
		170	120

CALIPER	
4	14

AMAX EXPLORATION INCORPORATED OPERATOR  
 66-8  
 MCCOY PROPERTIES-WILDCAT  
 CHURCHILL COUNTY, NEVADA

T.D. LOGGED 2472  
 T.D. DRILLER 2510  
 T.D. WELEX 2480