



COMPENSATED DENSITY LOG NEUTRON

COMPANY: AMAX EXPLORATION INCORPORATED OPERATOR
 INCORPORATED OPERATOR
 WELL: 66-8
 FIELD: MCCOY PROPERTY
 COUNTY: CHURCHILL STATE: CALIF
 COUNTY: CHURCHILL STATE: NEVADA
 Location: 1347.64' NORTH & 3353.06' EAST OF THE SOUTHWEST CORNER OF DIG C/AVL
 Sec: 8 Twp: 22N Rge: 40E
 Perm. Datum: 6.1. Elev: 5795
 Log Measured From: 6.1. Elev: 5795
 Drilling Measured From: 6.1. Elev: 5795
 Date: 3-18-80
 Run No: 01E
 Depth-Driller: 2510
 Depth-Welex: 2390
 Btm Log Inter: 2362
 Top Log Inter: 702
 Casing-Driller: 6 5/8 @ 704
 Casing-Welex: 702
 Bit: 6
 Type Fluid in Hole: CLAY BASE & L.C.M.
 Dens. Visc: N/A IN/A
 pH: Fluid Case: N/A IN/A
 Source of Sample: 214 IN/A
 R. @ Mass. Temp: 214 @ 89.5 F
 N/A @ N/A F
 R. @ Mass. Temp: N/A @ N/A F
 N/A @ N/A F
 Source R. R.: MEASURED
 R. @ BHT: N/A @ N/A F
 Time Since Circ: 10ST CIRC.
 Max. Rec. Temp: 209 F @ 814
 Equip. Location: 8566 INWOODLAND
 Recorded By: J. TAYLOR, F. DOVE
 Witnessed By: J. BRONSS

EQUIPMENT DATA

Run No.	01E	Run No.	01E
Tool Model No.	102-A	Log Type	COMP. DENS.
Diameter	3 5/8	Tool Model No.	125
Detector Model No.	102-A	Diameter	3 5/8
Type	SCINT.	Detector Model No.	127
Length	N/A	Type	SCINT.
Distance to Source	240*	Length	N/A
		Source Model No.	DCS
		Serial No.	DCS-81
		Spacing	N/A
		Type	Cs 137
		Strength	500mc

GENERAL

Hoist Truck No.	8586
Instrument Truck No.	8586
Tool Serial No.	20099
PAD NO.	17542
MAND. NO.	20060

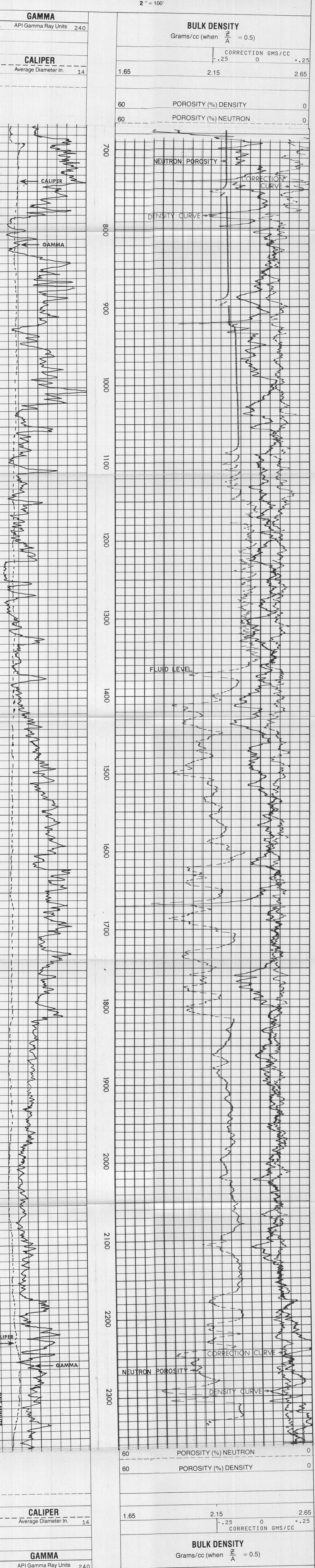
LOGGING DATA

Run No	GAMMA RAY			Sens. Settings	Zero Div. L or R	API G.R. Units per Log Div.	T.C. Sec.	GAMMA DENSITY			
	From	To	Speed Ft./Min.					Sens. Settings	Zero Div. L or R	Units per Log Div.	
01E	2362	702	25	1	200	2-L	20	1	1.65-2.65	33-L	.05

Reference Literature: NEURTON SUB 21009

Service Ticket No. 055289 Remarks: TOOL STUCK AT 2390' PULLED OVER 2500 lbs. from 2390 TO 2370 TO GET FREE.

Welex does not guarantee the accuracy of any interpretation of log data, conversion of log data to physical rock parameters, or recommendations which may be given by Welex personnel or which may appear on the log or in any other form. Any user of such data, interpretations, conversions, or recommendations, agrees that Welex is not responsible, except where specifically stated otherwise.



AMAX EXPLORATION INCORPORATED OPERATOR
 66-8
 MCCOY PROPERTY-WILCAT
 CHURCHILL COUNTY, NEVADA

T.D. LOGGED 2362
 T.D. DRILLER 2510
 T.D. WELEX 2390