



2" = 100'
WITH 2" LINEAR CORRELATION LOG

**DUAL INDUCTION
GUARD LOG**

COMPANY AMAX EXPLORATION, INCORPORATED OPER.
WELL 66-8
FIELD MCCOY PROPERTY-WILDCAT
COUNTY CHURCHILL STATE NEVADA
Location 1347.64' NORTH & 3353.06' EAST
OF THE SOUTHWEST CORNER OF:
C/D/AVL C/D/ENS/N

Sec. 8 Twp. 22N Rge. 40E
Permanent Datum G.L. Elev. 5795
Log Measured From G.L. Ft. Above Perm. Datum G.L. 5795
Date 3-18-80
Burn No. 01E
Depth-Driller 2492
Birn. Log. Iner. 2490
Top Log. Iner. 702
Casing-Driller 6 5/8 @ 704
Casing-Welex 702

Bit Size 6 CLAY BASE &
Type Fluid in Hole L.C.M.
Dens. Visc. N/A N/A
pH Fluid Loss N/A N/A ml
Source of Sample P.T.
R₁ @ Meas. Temp. 26.4 @ 58 °F
R₂ @ Meas. Temp. N/A @ N/A °F
R₃ @ Meas. Temp. N/A @ N/A °F
Source R₁ R₂ R₃ MEASURED
R₁ @ BHT N/A @ N/A °F
R₂ @ BHT N/A @ N/A °F
R₃ @ BHT N/A @ N/A °F
Time Since Circ. N/A
Max. Rec. Temp. 20.9 °F @ BHT
Equip. Location 8385 WOODLAND
Recorded By J. TAYLOR
Witnessed By J. GRUSS

Service Ticket No. 55289 Remarks:

| Change in Mud Type or Additional Samples | | SCALE CHANGES | | | |
|--|------------|---------------|-------|---------------|-----------------|
| Date | Sample No. | Type Log | Depth | Scale Up Hole | Scale Down Hole |
| | | | | | |

Type Fluid in Hole

| Dens. Visc. | | EQUIPMENT DATA | | | |
|-------------|------------|----------------|-------------------|----------|---------------|
| ph | Fluid Loss | Run No. | Tool Type and No. | Pad Type | Tool Position |
| | | ONE | DIG-21675 | | FREE |
| | | | | | 6" HOLE |

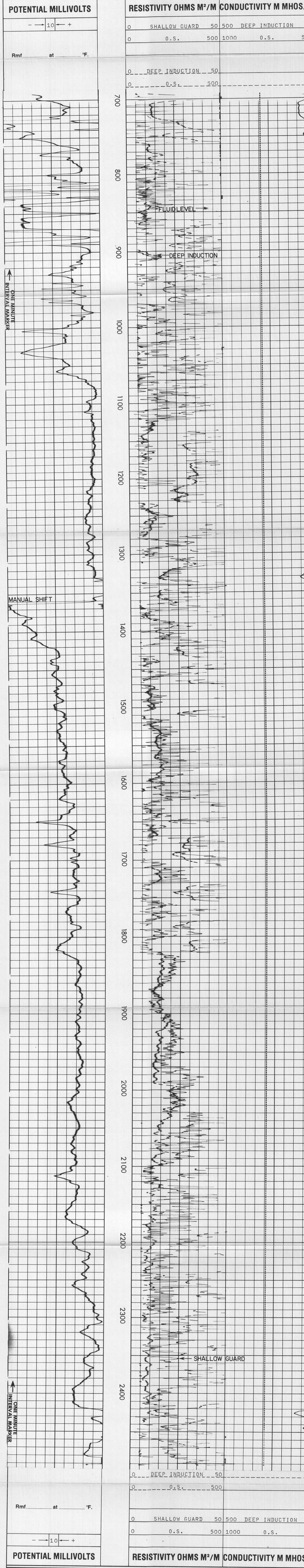
Source of Sample

| R ₁ @ Meas. Temp. | R ₂ @ Meas. Temp. | R ₃ @ Meas. Temp. | Source R ₁ R ₂ R ₃ |
|------------------------------|------------------------------|------------------------------|---|
| 26.4 @ 58 °F | N/A @ N/A °F | N/A @ N/A °F | MEASURED |
| N/A @ N/A °F | N/A @ N/A °F | N/A @ N/A °F | |
| N/A @ N/A °F | N/A @ N/A °F | N/A @ N/A °F | |

Time Since Circ. N/A
Max. Rec. Temp. 20.9 °F @ BHT
Equip. Location 8385 WOODLAND
Recorded By J. TAYLOR
Witnessed By J. GRUSS

NOTE: AIR DRILLED HOLE. FILLED WITH GEL-WATER-LCM AFTER DRILLING.

Welex does not guarantee the accuracy of any interpretation of log data. Conversion of log data to physical rock parameters, or recommendations which may be given by Welex personnel or which may appear on the log or in any other form. Any user of such data, interpretations, conversions, or recommendations agrees that Welex is not responsible, except where due to gross negligence or willful misconduct, for any loss, damages, or expenses resulting from the use thereof.



| POTENTIAL MILLIVOLTS | | RESISTIVITY OHMS M ² /M | | CONDUCTIVITY M MHOS/M | |
|----------------------|----|------------------------------------|-----|-----------------------|-----|
| 0 | 10 | 0 | 500 | 0 | 500 |
| 0 | 10 | 0 | 500 | 0 | 500 |

Rmf _____ at _____ °F.

| POTENTIAL MILLIVOLTS | | RESISTIVITY OHMS M ² /M | | CONDUCTIVITY M MHOS/M | |
|----------------------|----|------------------------------------|-----|-----------------------|-----|
| 0 | 10 | 0 | 500 | 0 | 500 |
| 0 | 10 | 0 | 500 | 0 | 500 |

Rmf _____ at _____ °F.

AMAX EXPLORATION, INCORPORATED OPERATOR
66-8
MCCOY PROPERTY-WILDCAT
CHURCHILL COUNTY, NEVADA

T.D. LOGGED 2490
T.D. DRILLER 2510
T.D. WELEX 2492