

COMPANY: AMAX EXPLORATION INCORPORATED OPERATOR
 WELL: 66-8
 FIELD: MCCOY PROPERTY
 COUNTY: CHURCHILL COUNTY, NEVADA
 STATE: NEVADA
 CITY: CHURCHILL
 LOG MEASURED FROM: 331.0 - 810
 LOG LENGTH: 2362
 LOG NUMBER: 2362
 LOG DATE: 10/22/09
 LOG TIME: 7:02 @ 7:04
 LOG SPEED: 25
 LOG TYPE: 1
 LOG SETTINGS: 200
 LOG DIV: 2-L
 LOG PER LOG DIV: 20
 LOG T.C. SEC: 1
 LOG SEMI SETTINGS: 200
 LOG ZERO: 2-L
 LOG T.C. SEC: 20
 LOG SEMI SETTINGS: 1.65-2.65
 LOG ZERO: 33-L
 LOG UNITS: .05
 LOG OPERATOR: T.D. WELX
 LOG DATE: 10/22/09
 LOG TIME: 7:02 @ 7:04
 LOG SPEED: 25
 LOG LOG TYPE: 1
 LOG LOG SETTINGS: 200
 LOG LOG DIV: 2-L
 LOG LOG PER LOG DIV: 20
 LOG LOG T.C. SEC: 1
 LOG LOG SEMI SETTINGS: 200
 LOG LOG ZERO: 2-L
 LOG LOG T.C. SEC: 20
 LOG LOG SEMI SETTINGS: 1.65-2.65
 LOG LOG ZERO: 33-L
 LOG LOG UNITS: .05
 LOG LOG OPERATOR: T.D. WELX
 LOG LOG DATE: 10/22/09
 LOG LOG TIME: 7:02 @ 7:04
 LOG LOG SPEED: 25

EQUIPMENT DATA		GAMMA RAY		GAMMA DENSITY	
Run No.	01E	Run No.	01E	Log Type	COMP.
Tool Model No.	102-A	Tool Model No.	102-A	Tool Model No.	425
Diameter	3.5/8	Diameter	3.5/8	Diameter	3.5/8
Detector Model No.	102-A	Detector Model No.	102-A	Detector Model No.	127
Type	SCINT.	Type	SCINT.	Type	SCINT.
Length	240"	Length	240"	Length	N/A
Distance to Source	240"	Source Model No.	DCS-81	Source Model No.	DCS-81
		Serial No.	N/A	Serial No.	N/A
		Spacing	N/A	Spacing	N/A
		Type	Cs	Type	Cs
		Strength	500mc	Strength	500mc

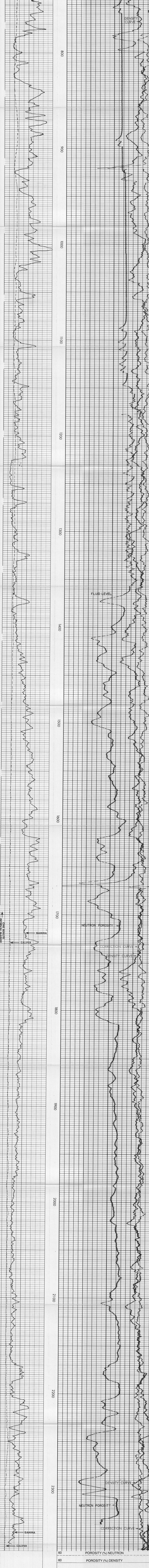
GENERAL		LOGGING DATA		GAMMA DENSITY	
Host Truck No.	8586	Run No.	01E	Log Type	COMP.
Instrument Truck No.	8586	Tool Model No.	102-A	Tool Model No.	425
Tool Serial No.	20099	Diameter	3.5/8	Diameter	3.5/8
PAD NO.	17542	Detector Model No.	102-A	Detector Model No.	127
MAND. NO.	20060	Type	SCINT.	Type	SCINT.
		Length	240"	Length	N/A
		Source Model No.	DCS-81	Source Model No.	DCS-81
		Serial No.	N/A	Serial No.	N/A
		Spacing	N/A	Spacing	N/A
		Type	Cs	Type	Cs
		Strength	500mc	Strength	500mc

Run No.	From	To	Speed Ft/Min	T.C. Sec	Semi Settings	Div L or R	API GR Units per Log Div	T.C. Sec	Semi Settings	Div L or R	Gamma Density	Units per Log Div
01E	2362	702	25	1	200	2-L	20	20	1.65-2.65	33-L	.05	

Reference Literature: NEURTON SUB 21009

Service Ticket No. 055289 Remarks: TBL STUCK AT 2330' PULLED OVER 2500 lbs. from 2390 TO 2370 TO GET FREE.

WELX does not guarantee the accuracy of any interpretation of log data. Conversion of log data to physical rock parameters, or recommendations which may be given by WELX personnel or which may appear on the log or in any other form. Any user of such data, interpretations, conversions, or recommendations agrees that WELX is not responsible, except where due to gross negligence or willful misconduct, for any loss, damage, or expense resulting from the use thereof.



GAMMA		CALIPER	
40	API Gamma Ray Units	240	
4		4	Average Diameter in.

GAMMA		CALIPER	
4	API Gamma Ray Units	240	
4		4	Average Diameter in.

AMAX EXPLORATION INCORPORATED OPERATOR
 66-8 MCCOY PROPERTY-WILCAT
 CHURCHILL COUNTY, NEVADA

T.D. LOGGED 2362
 T.D. DRILLER 2510
 T.D. WELX 2390

