

COMPANY: AMAX EXPLORATION INCORPORATED OPER
WELL: 66-8
FIELD: MCCOY PROPERTY
COUNTY: CHURCHILL STATE: NEV.
WELL: 66-8
MCCOY PROPERTY-WILDCAT
COUNTY: CHURCHILL STATE: NEV.
1367.44 NORTH 3 3/4 EAST
OF THE SOUTHWEST CORNER OF 1/4
(M2N)
C/DENY/N

Performent Depth: 51.7
Drilling Method: 6-1/2
Date: 3-18-80
Diphen: 0310
Diphen: 2432
Diphen: 7232
Coring: 6172 @ 704
Bit Size: 51.7 @ 704

Scale Up Hole: 1
Scale Down Hole: 1
Type Log: 1
Depth: 1

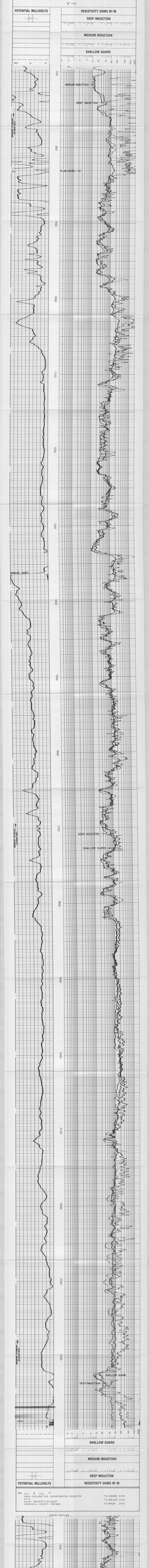
Equipment Data: Run No. 016-21675, Tool Type and No. 1, Pad Type: FREE, Tool Position: 6 HOLE

Source of Sample: R @ Meas. Temp. @, S @ Meas. Temp. @, Source Fluid: N/A

Notes: LOST CIRCULATION, NOTE: AIR DRILLED HOLE, FILLED WITH GEL-WATER-LCM AFTER DRILLING.

Service Ticket No: 55289, Remarks: Change in Mud Type or Additional Samples

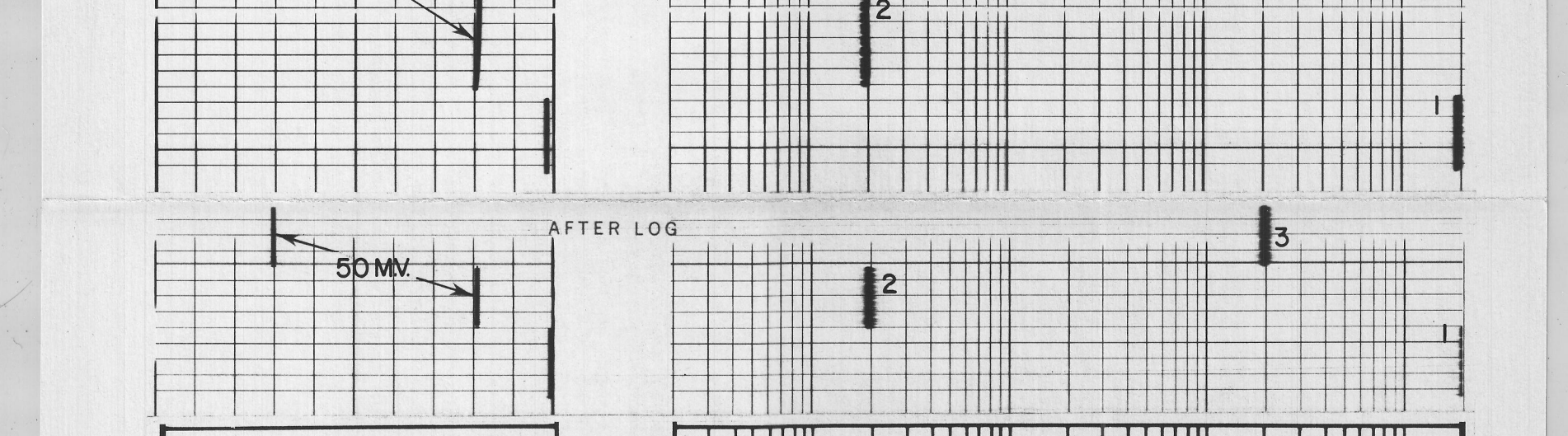
Log Data: Density, Viscosity, pH, Fluid Loss, Source of Sample, R @ Meas. Temp., S @ Meas. Temp., Source Fluid, R @ BHT, S @ BHT, Mud Loss, Mud Loss, Mud Loss



POTENTIAL MILLIVOLTS: F, at, Fm
RESISTIVITY OHMS M/M: SHALLOW GUARD, MEDIUM INDUCTION, DEEP INDUCTION

MANUEL SHIFT, ONE MINUTE INTERVAL MARKER

REPEAT SECTION: BEFORE LOG, AFTER LOG



BEFORE LOGGING: 1. RECORD ELECTRICAL ZEROS, 2. RECORD INTERNAL TOOL CALIBRATION SIGNALS EQUIVALENT TO 2.0 OHMMETERS RESISTIVITY, 3. RECORD INTERNAL TOOL CALIBRATION SIGNALS EQUIVALENT TO 200 OHMMETERS RESISTIVITY.

AFTER LOGGING: REPEAT STEPS 1, 2 AND 3.

Log Footer: AMAX EXPLORATION INCORPORATED OPERATOR, T.D. LOGGED 2490, T.D. DRILLER 2510, T.D. WELEX 2492