

**COMPENSATED
ACOUSTIC VELOCITY
LOG**

COMPANY: AMAX EXPLORATION INCORPORATED
 WELL: MC COY 14-7
 FIELD: DIXIE VALLEY
 COUNTY: CHURCHILL
 STATE: NEVADA
 LOCATION: N/A
 OTHER SERVICES: DIGL N/D/ENS

PERMITS: 7-Top, 23 N. Page 40 E.
 DATE: 6-1-77
 LOGGING: F. Above Perm Datum
 DATE: 03-21-80
 LOGGING: 01E
 DATE: 2010
 LOGGING: 1.979
 DATE: 505 @ 505
 LOGGING: 505 @ 505

DEPTH: 120
 SCALE UP: 120-20
 SCALE DOWN: 120-20

TYPE LOG: 1981
 DEPTH: 120-20
 SCALE UP: 120-20
 SCALE DOWN: 120-20

Dens. Visc.		Type Log		Depth		Scale Up Hole		Scale Down Hole	
1	1	1	1	1	1	1	1	1	1
1	1	1	1	1	1	1	1	1	1

EQUIPMENT DATA		Run No.		Tool Type and No.		Pad Type		Tool Position		Other	
1	1	1	1	1	1	1	1	1	1	1	1
1	1	1	1	1	1	1	1	1	1	1	1

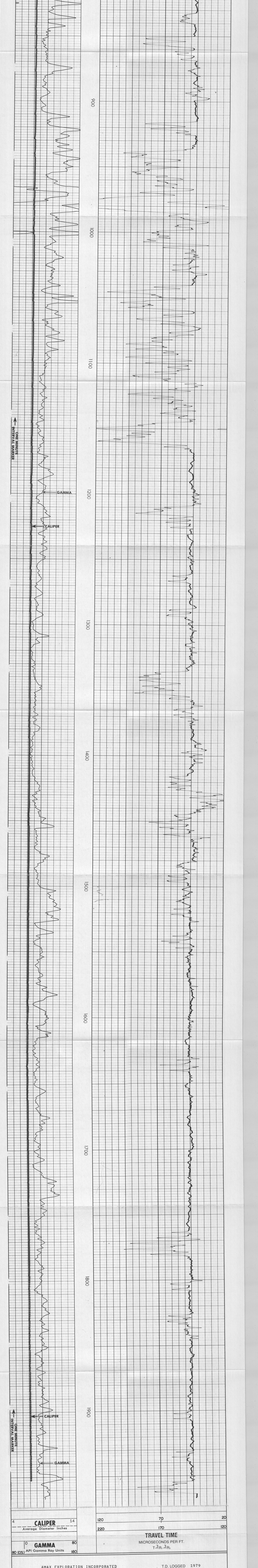
WELX does not guarantee the accuracy of any interpretation of log data, conversion of log data to physical rock parameters, or recommendations which may be given by WELX personnel or which may appear on the log or in any other form. Any use of such data, interpretations, conversions, or recommendations agrees that WELX is not responsible, except where due to gross negligence or willful misconduct, for any loss, damages, or expenses resulting from the use thereof.

5" = 100'

GAMMA
 API Gamma Ray Units
 0 80
 80 (Gs) 180

CALIPER
 Average Diameter Inches
 4 14

TRAVEL TIME
 MICROSECONDS PER FT.
 $T = \frac{2}{R_1 + R_2}$
 120 70 20
 220 170 120



CALIPER
 Average Diameter Inches
 4 14

GAMMA
 API Gamma Ray Units
 0 80
 80 (Gs) 180

TRAVEL TIME
 MICROSECONDS PER FT.
 $T = \frac{2}{R_1 + R_2}$
 120 70 20
 220 170 120

AMAX EXPLORATION INCORPORATED
 MC COY 14-7
 DIXIE VALLEY
 CHURCHILL COUNTY, CALIFORNIA

T.D. LOGGED 1979
 T.D. DRILLER 2010
 T.D. WELX 1981
 ELEV: 6L.4560

REPEAT SECTION

