

**COMPENSATED
ACOUSTIC VELOCITY
LOG**

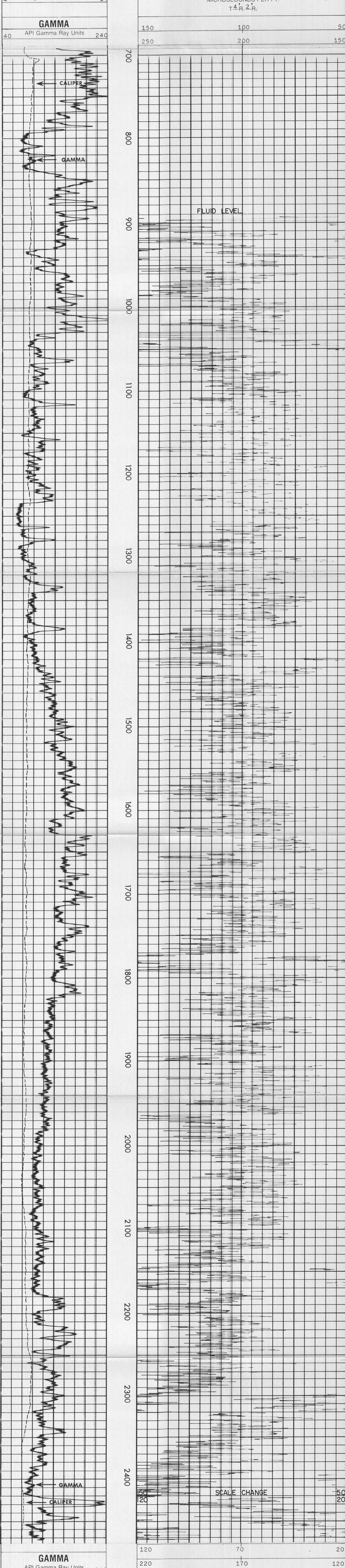
COMPANY AMAX EXPLORATION INCORPORATED OPERATOR
 WELL 66-8
 FIELD MCCOY PROPERTYS-WILDCAT
 COUNTY CHURCHILL STATE NEVADA
 Location 1347.64' NORTH & 3353.06' EAST OF THE SOUTHWEST CORNER OF: C/DENS/N
 Sec. 8 Twp. 22N Rge. 40E
 Permanent Datum G.L.L. Elev. 5795
 Log Measured From G.L.L. R. Above Perm Datum D.L. 5795
 Date 3-18-80
 Run No. ONE
 Depth-Driller 2510
 Depth-Welex 2478
 Btm. Log Inter. 2478
 Top Log Inter. 702 @ 704
 Casing-Driller 6 5/8 @ 704
 Casing-Welex 702
 Bit Size 6
 Type Fluid in Hole CLAY BASE &
 Date Used N/A
 Fluid Loss N/A
 P.T. N/A
 Source of Sample N/A @ 58' F
 R₁ @ Meas. Temp. N/A @ N/A/F
 R₂ @ Meas. Temp. N/A @ N/A/F
 Source R₁ R₂ MEASURED
 R₁ @ BHT N/A @ N/A/F
 R₂ @ BHT N/A @ N/A/F
 R₃ @ BHT N/A @ N/A/F
 Time Since Circ. N/A
 Max. Hgt. Temp. 210 F @
 Equip. Location 8586 I WOODLAND
 Recorded By G. TAYLOR R. DIVE
 Witnessed By J. GROSS

Service Ticket No. 055289 Remarks:

Change in Mud Type or Additional Samples		Type Log	Depth	SCALE CHANGES	Scale Up Hole	Scale Down Hole
Date	Sample No.	AVL	2420		50-150	20-120
Type Fluid in Hole						
Dens.	Visc.					
ph	Fluid Loss					
EQUIPMENT DATA						
Source of Sample	Run No.	Tool Type and No.	Pad Type	Tool Position	Other	
R ₁ @ Meas. Temp.	ONE	AVL-26249		FREE	6" HOLE	
R ₂ @ Meas. Temp.						
Source R ₁ R ₂						
R ₁ @ BHT						
R ₂ @ BHT						
R ₃ @ BHT						

Welex does not guarantee the accuracy of any interpretation of log data, conversion of log data to physical rock parameters, or recommendations which may be given by Welex personnel or which may appear on the log or in any other form. Any user of such data, interpretations, conversions, or recommendations agrees that Welex is not responsible, except where due to gross negligence or willful misconduct, for any loss, damages, or expenses resulting from the use thereof.

2" = 100'



GAMMA	API Gamma Ray Units	40	240
CALIPER	Average Diameter Inches	4	14

AMAX EXPLORATION INCORPORATED OPERATOR
 66-8
 MCCOY PROPERTYS-WILDCAT
 CHURCHILL COUNTY, NEVADA

T.D. LOGGED 2472
 T.D. DRILLER 2510
 T.D. WELEX 2480