

WELX
5" I.D.
COMPANYS AMAX EXPLORATION INCORPORATED
**COMPENSATED
ACOUSTIC VELOCITY
LOG**

COMPANY: AMAX EXPLORATION INCORPORATED
WELL: MC COY 14-7
FIELD: DIXIE VALLEY
COUNTY: CHURCHILL
STATE: NEVADA
Location: N/A
Sensors: G/D/E/L N/D/E/W/S

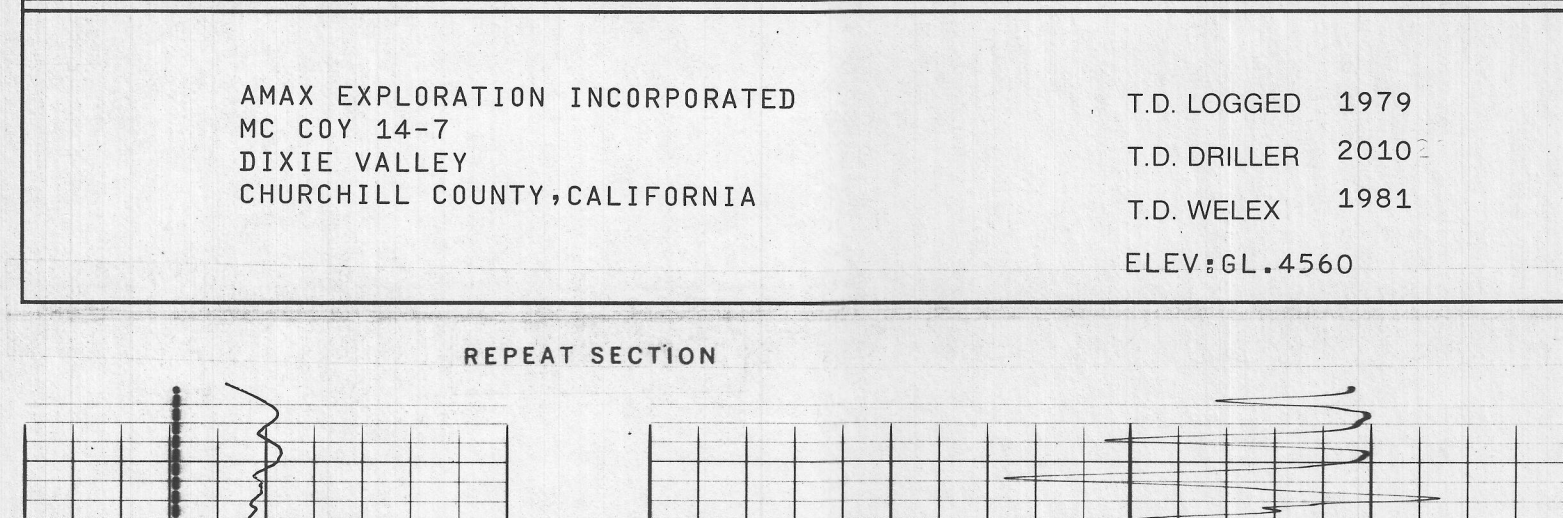
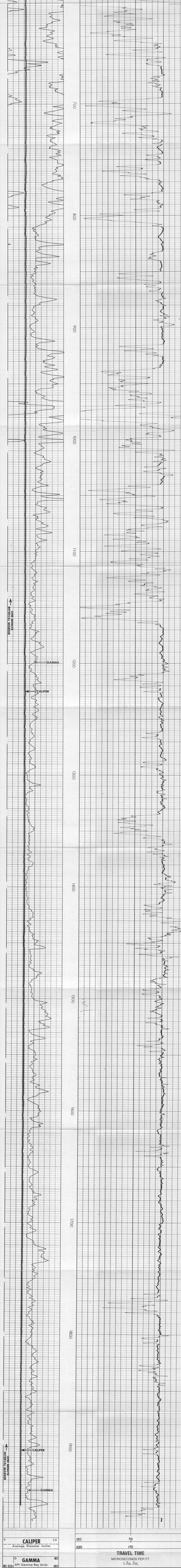
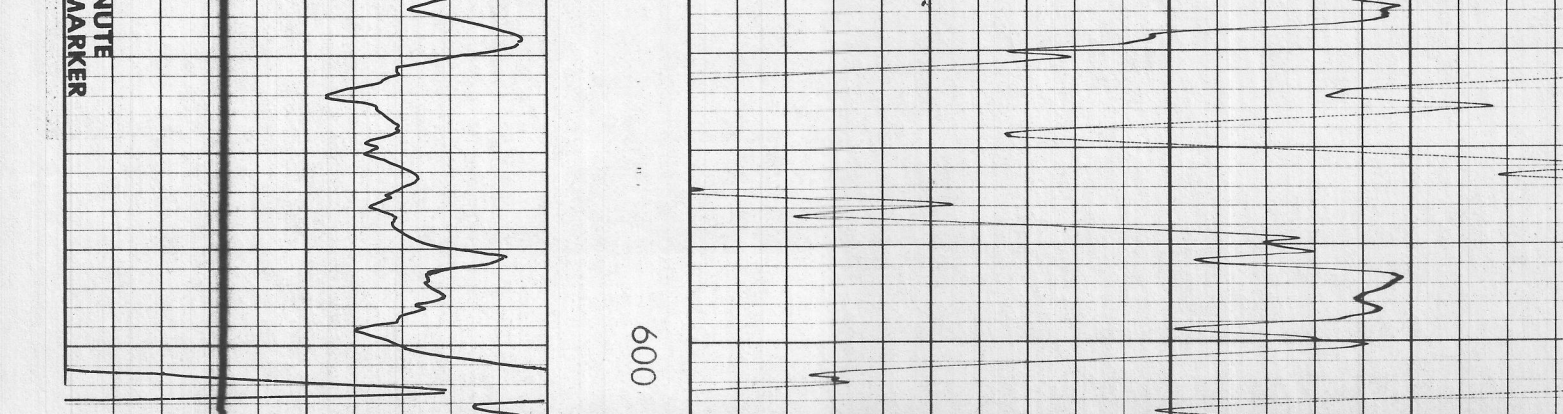
Run No.: 05-24-80
Depth-Wellbit: 2010
Depth-Driller: 1993
Tool JOHNSON
Cable-Driller: 8-5789505
Cable-Weber: 503/2

Remnant Datum: G.L.L. Elev: K.E.N.A
Log Measured From: G.L.L. F Above Perm Datum: G.L. 4560
Datum: G.L.L.
Log Measured From: 05-24-80
Depth-Wellbit: 2010
Depth-Driller: 1993
Tool JOHNSON
Cable-Driller: 8-5789505
Cable-Weber: 503/2

| SCALE CHANGES | | Type Log | Depth | Scale Up Hole | Scale Down Hole |
|---------------|--|----------|-------|---------------|-----------------|
| | | | 1981 | 120-20 | 120-20 |

| EQUIPMENT DATA | | Run No. | Tool Type and No. | Pad Type | Tool Position | Other |
|----------------|--|---------|-------------------|----------|---------------|-------------|
| | | 05 | GNF 26249 | | FREE | 5 1/2 HDL F |

Wells does not guarantee the accuracy of any interpretation of log data, conversion of log data to physical rock parameters, or recommendations which may be given by Wells personnel or which may appear on the log or in any other form. Any user of such data, interpretations, conversions, or recommendations agrees that Wells is not responsible, except where due to gross negligence or willful misconduct, for any loss, damage, or expense resulting from the use thereof.



AMAX EXPLORATION INCORPORATED
MC COY 14-7
DIXIE VALLEY
CHURCHILL COUNTY, CALIFORNIA
T.D. LOGGED 1979
T.D. DRILLER 2010
T.D. WELX 1981
ELEV: 61,4560

