



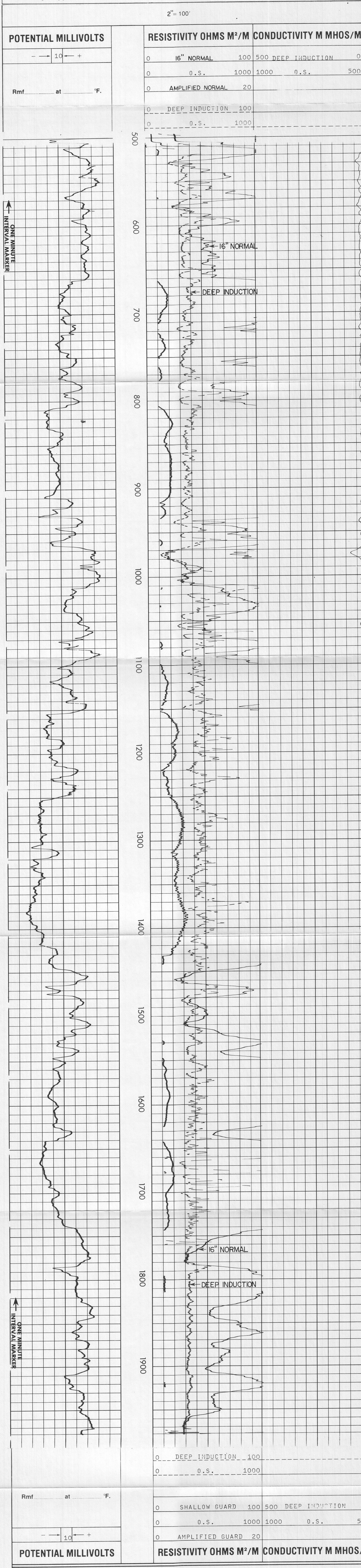
**DUAL INDUCTION
GUARD LOG**
WITH 2" LINEAR CORRELATION LOG

COMPANY	AMAX EXPLORATION INCORPORATED	WELL	MC COY 14-7
FIELD	DIXIE VALLEY	STATE	NEVADA
COUNTY	CHURCHILL	Location	N/A
Sec.	7 Twp. 23 N. Rge. 40 E.	Other Services:	CAVL N/DEMS.
Permanant Datum	6 L.L. Elev. 4560	Log Measured From	6 L.L. Ft Above Perm. Datum
Drilling Measured From	6 L.L.	Date	05-21-80
Run No.	ONE	Depth - Driller	2010
Depth - Welex	1931	Btm. Log Inter.	1979
Top Log Inter.	505	Casing - Driller	8 5/8 @ 505
Casing - Welex	505	Bit Size	6 1/2
Type Fluid in Hole	GEL-WATER	Dens. Livc.	N/A
pH	N/A	Fluid Loss	N/A
Source of Sample	PIT	R ₁₀₀ @ Meas. Temp.	N/A @ N/A °F
R ₁₀₀ @ Meas. Temp.	N/A @ N/A °F	R ₅₀ @ Meas. Temp.	N/A @ N/A °F
R ₂₅ @ Meas. Temp.	N/A @ N/A °F	R ₁₀ @ Meas. Temp.	N/A @ N/A °F
R ₅ @ Meas. Temp.	N/A @ N/A °F	Source R ₁₀₀	N/A
R ₅ @ BHT	N/A @ N/A °F	R ₁₀₀ @ BHT	N/A @ N/A °F
R ₅₀ @ BHT	N/A @ N/A °F	R ₅₀ @ BHT	N/A @ N/A °F
R ₂₅ @ BHT	N/A @ N/A °F	R ₂₅ @ BHT	N/A @ N/A °F
R ₁₀ @ BHT	N/A @ N/A °F	R ₁₀ @ BHT	N/A @ N/A °F
R ₅ @ BHT	N/A @ N/A °F	R ₅ @ BHT	N/A @ N/A °F
Time Since Circ.	1.05 T. @ 11RC.	Equip. Location	9586-1 WDI AND DATE OF RUN
Max. Rec. Temp.	1.73 T. @ 2HIT	Witnessed By	SR055

Service Ticket No. 055299 Remarks:

Change in Mud Type or Additional Samples		SCALE CHANGES		
Date	Sample No.	Type Log	Depth	Scale Up Hole
				Scale Down Hole
Depth - Driller				
Type Fluid in Hole				
Dens.	Visc.			
pH	Fluid Loss			
Source of Sample				
R ₁₀₀ @ Meas. Temp.		Run No.	Tool Type and No.	Pad Type
R ₅₀ @ Meas. Temp.		ONE	DIG 21625	STAR 1 1/2
R ₂₅ @ Meas. Temp.				Other
R ₁₀ @ Meas. Temp.				
R ₅ @ Meas. Temp.				
Source: R ₁₀₀	R ₁₀₀			
R ₅₀ @ BHT				
R ₂₅ @ BHT				
R ₁₀ @ BHT				
R ₅ @ BHT				

Welex does not guarantee the accuracy of any interpretation of log data, conversion of log data to physical rock parameters, or recommendations which may be given by Welex personnel or which may appear on the log or in any other form. Any user of such data, interpretations, conversions, or recommendations agrees that Welex is not responsible, except where due to gross negligence or willful misconduct, for any loss, damages, or expenses resulting from the use thereof.



AMAX EXPLORATION INCORPORATED
MC COY 14-7
DIXIE VALLEY
CHURCHILL COUNTY, NEVADA

T.D. LOGGED 1979
T.D. DRILLER 2010
T.D. WELEX 1981
ELEV. GL. 4560

