



COMPENSATED DENSITY LOG

COMPANY AMAX EXPLORATION INCORPORATED

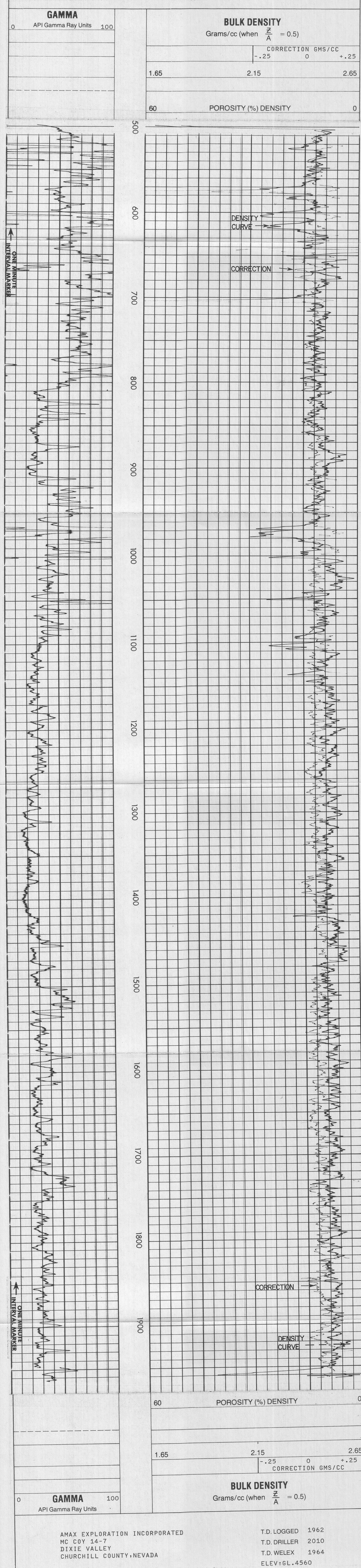
COMPANY AMAX EXPLORATION INCORPORATED
 WELL MC COY 14-7
 FIELD DIXIE VALLEY
 COUNTY CHURCHILL STATE NEV.
 LOCATION N/A
 OTHER SERVICES: CAVL

Permanent Datum 7 Twp. 23 N. Rge. 40 E.
 G.L.L. Elev. 4560
 D.F. N/A
 G.L.L. F. Above Perm. Datum
 Elev. KB N/A
 D.F. N/A
 G.L.L. 4560

Date	05-21-80
Run No.	01E
Depth - Driller	2010
Depth - Welex	1962
Bm. Log Inter.	1962
Top Log Inter.	505
Casing - Driller	8 5/8 @ 505
Casing - Welex	505
Bit Size	6 1/2
Type Fluid in Hole	GEL-WATER
Dens. I. Visc.	N/A
PH. I. Fluid Loss	N/A
Source of Sample	PIT
R ₁₀ @ Meas. Temp.	N/A @ N/AF
R ₅ @ Meas. Temp.	N/A @ N/AF
R ₁₀ @ Meas. Temp.	N/A @ N/AF
R ₅ @ Meas. Temp.	N/A @ N/AF
Source B. R.	N/A @ N/AF
Source B. R.	N/A @ N/AF
Time Since Circ.	1.051 CIRG.
Max. Rec. Temp.	175 F @ BHT
Equip. Location	9586 - JMDI ND
Recorded by	DOVE & TAYLOR
Witnessed by	GR055

EQUIPMENT DATA										
GAMMA RAY	GAMMA DENSITY									
Run No. 01E	Run No. 01E									
Tool Model No. 102-A	Log Type COMRDENS.									
Diameter 3 5/8	Tool Model No. 125									
Detector Model No. 102-A	Diameter 3 5/8									
Type SCINT.	Detector Model No. 127									
Length N/A	Type SCINT.									
Distance to Source 240	Length N/A									
	Source Model No. DCS 81									
	Serial No. DCS-									
	Spacing N/A									
	Type Cs 137									
	Strength 500 mc									
GENERAL										
Hoist Truck No.										
Instrument Truck No. 8886										
Tool Serial No. 28598										
PADSERIAL NO. 17542	MANDREL 20060									
LOGGING DATA										
GENERAL	GAMMA RAY	GAMMA DENSITY								
Run No.	Depths	Speed Ft./Min.	T.C. Sec.	Sens. Settings	Zero Div. L or R	API G.R. Units per Log Div.	T.C. Sec.	Sens. Settings	Zero Div. L or R	Units per Log Div.
1	1962 To 505	25	1	100	0	10	5			.05
Reference Literature:										
Service Ticket No Q55299 Remarks:										

Welex does not guarantee the accuracy of any interpretation of log data, conversion of log data to physical rock parameters, or recommendations which may be given by Welex personnel of which may appear on this log or in any other form. Any user of such data, interpretations, conversions, or recommendations agrees that Welex is not responsible, except where due to gross negligence or willful misconduct, for any loss, damages, or expenses resulting from the use thereof.



REPEAT SECTION

