

COMPENSATED ACUSTIC VELOCITY LOG

COMPANY ANAX EXPLORATION INCORPORATED
WELL MC COY 14-7
FIELD DIXIE VALLEY
COUNTY CHURCHILL STATE NEVADA

Table with columns for Date, Depth, and various log parameters like Fluid Loss, Fluid Loss, etc.

Table with columns for Type Log, Depth, Scale Up Hole, Scale Down Hole, and Equipment Data.

WELX does not guarantee the accuracy of any interpretation of log data, conversion of log data to physical rock parameters, or recommendations which may be given by WELX...

Table with columns for Gamma Ray Units and Caliper Average Diameter Inches.

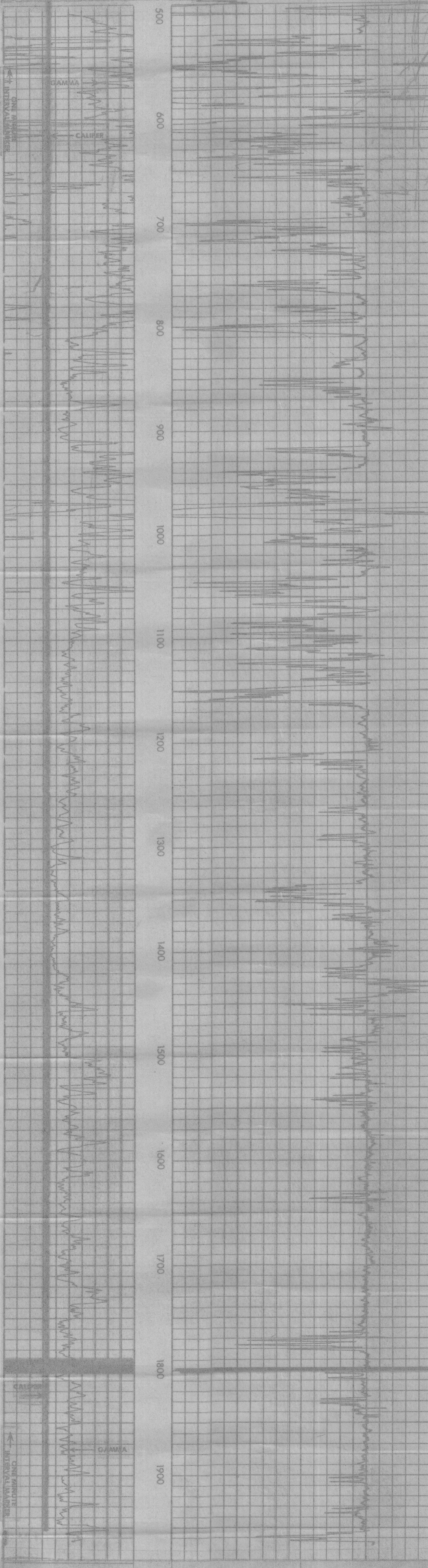


Table with columns for Gamma Ray Units and Caliper Average Diameter Inches.

AMAX EXPLORATION INCORPORATED
MC COY 14-7
DIXIE VALLEY
CHURCHILL COUNTY, CALIFORNIA

T.D. LOGGED 1979
T.D. DRILLER 2010
T.D. WELX 1981
ELEV: 61,4560

REPEAT SECTION

