



COMPENSATED DENSITY LOG

COMPANY: AMAX EXPLORATION INCORPORATED
 WELL: MC 60V 14-7
 FIELD: BIKE VALLEY
 COUNTY: CHURCHILL
 STATE: NEVADA
 DATE: 11-17-62
 LOGGERS: T.D. DRILLER
 SURVEYOR: T.D. WELCH
 ELEVATION: 4560

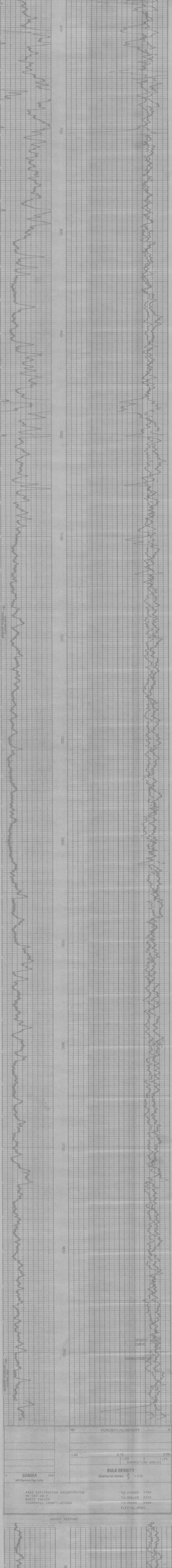
GAMMA RAY		EQUIPMENT DATA		GAMMA DENSITY	
Run No.	0100	Run No.	0100	Run No.	0100
Tool Mgmt No.	102-2	Log Type	LOG	Log Type	LOG
Diameter	3.570	Tool Mgmt No.	102-2	Tool Mgmt No.	102-2
Detector Model No.	102-2	Detector	572	Detector	572
Type	SCINT.	Detector Model No.	102-2	Detector Model No.	102-2
Length	140	Length	140	Length	140
Distance to Source	140	Source Model No.	102-2	Source Model No.	102-2
		Serial No.	61	Serial No.	61
		Weight	17.4	Weight	17.4
		Strength	1.37	Strength	1.37
		Count Rate	200	Count Rate	200

GENERAL		LOGGING DATA		GAMMA DENSITY	
Run No.	1	Run No.	1	Run No.	1
Page	10	Page	10	Page	10
Depth	505	Depth	505	Depth	505
Scale	25	Scale	25	Scale	25
Settings	100	Settings	100	Settings	100
APB R Unit	0	APB R Unit	0	APB R Unit	0
Log Div	30	Log Div	30	Log Div	30
Sec	1	Sec	1	Sec	1
Gamma Density	0.5	Gamma Density	0.5	Gamma Density	0.5

Service Ticket No 055299

Remarks:

Wells data not guaranteed the accuracy of any registration of log data, correction of log data or physical log or analysis, or recommendations which may be given by Wells personnel or which may appear on this log or in any other form. Any use of log data, interpretations, corrections, or recommendations against the Wells and/or resources, except where due to gross negligence or willful misconduct, for any loss, damage or expense resulting from the use hereof.



AMAX EXPLORATION INCORPORATED
 MC 60V 14-7
 BIKE VALLEY
 CHURCHILL COUNTY, NEVADA

T.D. LOGGED 1962
 T.D. DRILLER 2010
 T.D. WELCH 1964
 ELEV: 4560