



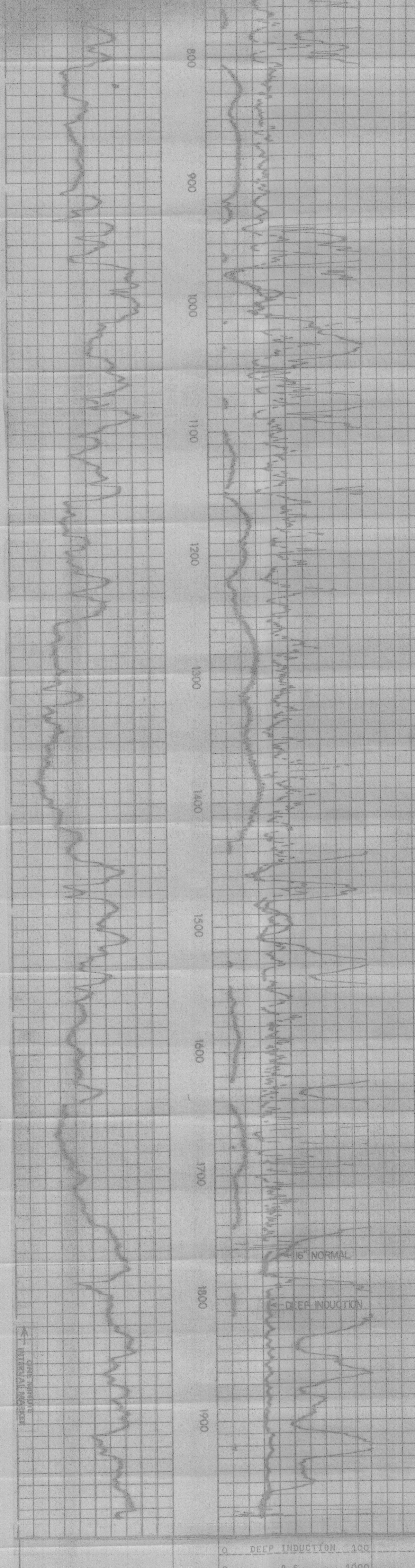
2-100

COMPANY: AMAX EXPLORATION INCORPORATED
 WELL: MC COY 14-7
 FIELD: DIXIE VALLEY
 COUNTY: CHURCHILL
 STATE: NEVADA
 LOCATION: N/A
 OPERATOR: CIVIL
 N/S: S.E.W.S.
 DATE: 7-17-79
 TIME: 2:30 P.M.
 DRILLER: G.L. B. A.
 LOGGING: G.L. B. A.

DATE	DEPTH	TYPE	LAB	SCALE	UP	DOWN

DATE	DEPTH	TYPE	LAB	SCALE	UP	DOWN

DATE	DEPTH	TYPE	LAB	SCALE	UP	DOWN



DATE	DEPTH	TYPE	LAB	SCALE	UP	DOWN



AMAX EXPLORATION INCORPORATED
 MC COY 14-7
 DIXIE VALLEY
 CHURCHILL COUNTY, NEVADA
 T.D. LOGGED 1979
 T.D. DRILLER 2010
 T.D. WELEX 1981
 ELEV: GL 4560