



COMPENSATED DENSITY LOG NEUTRON

COMPANY: AMAX EXPLORATION INCORPORATED OPERATOR
 WELL: 66-8
 FIELD: MCCOY PROPERTY-WILDCAT
 COUNTY: CHURCHILL STATE: NEVADA
 LOCATION: 1347.64' NORTH & 3353.06' EAST OF THE SOUTHWEST CORNER OF C/AVL (MDM)
 Sec: 8 Twp: 22N Rge: 40E
 Permanent Datum: 6-L-1 Elev: 5795
 Log Measured from: 6-L-1 Ft. Above Form Datum
 Drilling Measured from: 6-L-1 G.L. 5795
 Date: 3-18-80
 Run No: 01NE
 Depth-Driller: 2510
 Depth-Welex: 2390
 Bitm. Log Iner.: 2362
 Top Log Iner.: 702
 Casing-Driller: 6 5/8 @ 704
 Casing-Welex: 702
 Bit Size: 6
 Type Fluid in Hole: CLAY BASE & L.C.M.
 Dens. Visc: N/A N/A
 pH / Fluid Loss: N/A N/A
 Source of Sample: P/T
 R. @ Meas. Temp: 26.4 @ 85 F
 R. @ Meas. Temp: N/A @ N/A F
 R. @ Meas. Temp: N/A @ N/A F
 Source R. @ Meas. Temp: MESSURED N/A @ N/A F
 Time Since Circ: N/A @ N/A F
 Time Since Circ: LOST @ N/A F
 Max. Rec. Temp: 209 F @ BHT
 Equip. Location: 8586 1000D/LAND
 Recorded By: J. TAYLOR, R. DOVE
 Witnessed By: J. GROSS

Equipment Data

Run No.	01NE	Run No.	01NE
Tool Model No.	102-A	Log Type	COMP. DENS.
Diameter	3 5/8	Tool Model No.	125
Detector Model No.	102-A	Diameter	3 5/8
Type	SCINT.	Detector Model No.	127
Length	N/A	Type	SCINT.
Distance to Source	240"	Length	N/A
		Source Model No.	DCS
		Serial No.	DCS-81
		Spacing	N/A
		Type	Cs 137
		Strength	500mc

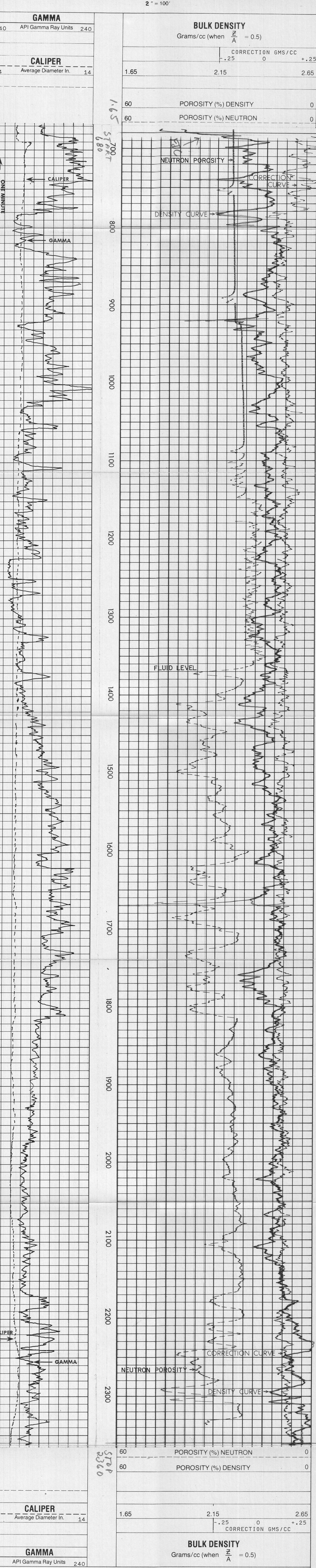
Logging Data

Run No.	01NE	From	2362	To	702	Speed Ft./Min.	25	T.C. Sec.	1	Sens. Settings	200	Zero Div. L or R	2-L	API G.R. Units per Log Div.	20	T.C. Sec.	1	Sens. Settings	1.65-2.65	Zero Div. L or R	33-L	Units per Log Div.	.05
---------	------	------	------	----	-----	----------------	----	-----------	---	----------------	-----	------------------	-----	-----------------------------	----	-----------	---	----------------	-----------	------------------	------	--------------------	-----

Reference Literature: NEURTON SUB 21009

Service Ticket No. 055289 Remarks: TOOL STUCK AT 2390' PULLED OVER 2500 lbs. from 2390 TO 2370 TO GET FREE.

Welex does not guarantee the accuracy of any interpretation of log data conversion of log data to physical rock parameters, or recommendations which may be given by Welex personnel or which may appear on the log or any other form. Any user of such data, interpretations, conversions or recommendations agrees that Welex is not responsible, except as indicated on the log.



40	API Gamma Ray Units	240
4	Average Diameter In.	14
60	POROSITY (%) NEUTRON	0
60	POROSITY (%) DENSITY	0
1.65		2.65
	CORRECTION GMS/CC	+ .25

AMAX EXPLORATION INCORPORATED OPERATOR
 66-8
 MCCOY PROPERTY-WILDCAT
 CHURCHILL COUNTY, NEVADA

T.D. LOGGED 2362
 T.D. DRILLER 2510
 T.D. WELEX 2390