

WELL NO. 66-8
 FIELD NO. 100
 COUNTY: SUBSHELL, STATE: NEVADA
 TOWN: 35S, RANGE: 3E, EAST 1/4, 1/4
 SECTION: 36, TWP. 35S, R. 3E, E. 1/4, 1/4
 DATE: 11/21/67
 LOGGERS: J. W. WELLS, JR., J. W. WELLS, JR.
 SURVEYOR: J. W. WELLS, JR.
 OPERATOR: AMAX EXPLORATION INCORPORATED

Field Data
 Run No. 2362
 Tool Joint No. 102-A
 Diameter 3 5/8
 Detector Model No. 502-A
 Type SCINT.
 Length N/A
 Detector RI Source 240
 User Truck No. 8986
 Instrument Truck No. 8986
 Tool Serial No. 20099
 P.A.D. No. 11587
 MAND. NO. 20060

EQUIPMENT DATA
 Model No. 502-A
 Type SCINT.
 Length N/A
 Serial No. 20099
 Spacing 100
 Type 502-A
 Detector RI Source 240

LOGGING DATA
 Gamma Ray: 2362, 702, 25, 1, 200
 APD-6 Units: 20, 1, 1.65, 2.55, 33-1, 0.5
 Gamma Density: 2.15, 2.65

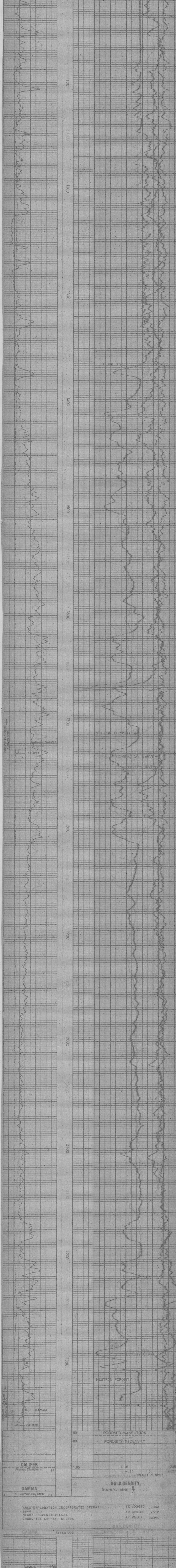
Reference Literature
 NEURTON-SUB-21009

Service Ticket No. 055289
 Remarks: TOOL STUCK AT 2390' PULLED OVER 2500 lbs. from 2390 TO 2370 TO GET FREE.

5' = 100'
 GAMMA: API Gamma Ray Units 240
 CALIPER: Average Diameter in. 14

BULK DENSITY: Grams/cc (when $\frac{Z}{A} = 0.5$)
 CORRECTION GMS/CC: 0, .25

POROSITY (% DENSITY)
 POROSITY (% NEUTRON)



AMAX EXPLORATION INCORPORATED OPERATOR
 66-8 MCCOY PROPERTY - WILCAT
 CHURCHILL COUNTY, NEVADA
 T.D. LOGGED 2362
 T.D. DRILLER 2310
 T.D. WELX 2390

AFTER LOG
 GAMMA: 400, BKGRD PLUS 175 G/R UNITS
 CALIPER: 14"

BEFORE LOG
 GAMMA: 400, BKGRD PLUS 175 G/R UNITS
 CALIPER: 14"