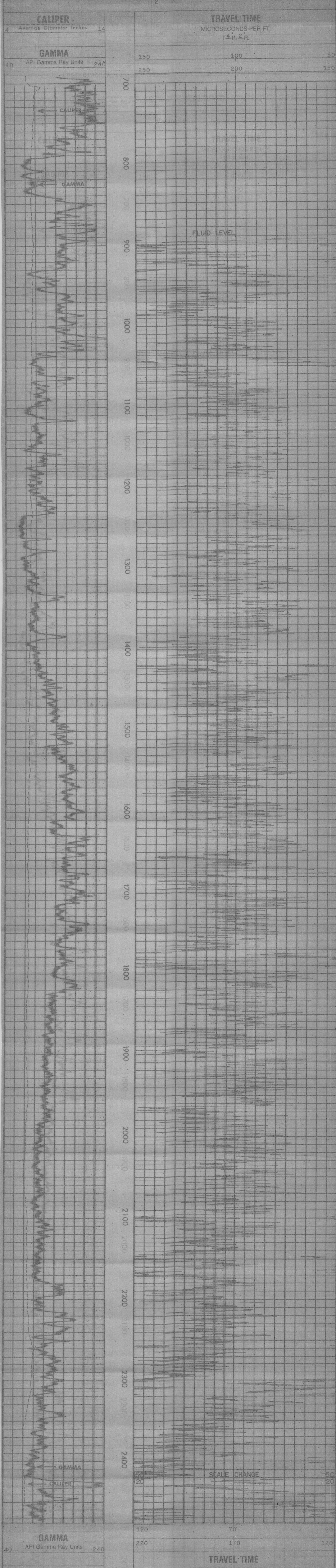


COMPANY: AMAX EXPLORATION INCORPORATED OPERATOR
 WEL: 66-8
 FIELD: MCCOY PROPERTIES WILDCAT
 COUNTY: CHURCHILL STATE: NEVADA
 LOCATION: 1317.64' NORTH & 3353.06' EAST DIG OF THE SOUTHWEST CORNER OF 1 (MDM)
 DATE: 3-18-80
 TIME: 09:15
 DRILLER: D.W.E.
 DEPTH: 2510
 BIT: 2-80
 TOP LOG TIME: 2478
 CALIBER: 6 5/8 @ 704
 GAIN: 202
 S.S.T.: 5.1
 F.A.B.P.E.M. DATA: 5795
 ELEV. K.B.:
 D.F.: 5795

Change in Mud Type or Additional Samples		Type Log	Depth	Scale Up Hole	Scale Down Hole
Date	Sample No.	AVL	2420	50-150	20-120
Depth-Driller	Type Fluid in Hole				

Dens. Visc.		EQUIPMENT DATA	
ph	Fluid Loss	Fun No.	Tool Type and No.
		01E	AVL-26249
Source of Sample		Pad Type	Tool Position
R ₁ @ Meas. Temp.			FREE
R ₂ @ Meas. Temp.			6" HOLE
R ₃ @ Meas. Temp.			
Source: R ₁ , R ₂ , R ₃			
R ₁ @ BHT	N/A @ N/AF		
R ₂ @ BHT	N/A @ N/AF		
R ₃ @ BHT	N/A @ N/AF		

WELLEX does not guarantee the accuracy of any interpretation of log data, conversion of log data to physical rock parameters, or recommendations which may be given by WELLEX personnel which may appear on the log or in any other form. Any user of such data, interpretations, conversions, or recommendations agrees that WELLEX is not responsible, except where due to gross negligence or willful misconduct, for any loss, damages, or expenses resulting from the use hereof.



AMAX EXPLORATION INCORPORATED OPERATOR
 66-8
 MCCOY PROPERTIES WILDCAT
 CHURCHILL COUNTY, NEVADA

T.D. LOGGED 2472
 T.D. DRILLER 2510
 T.D. WELLEX 2480