



COMPENSATED DENSITY LOG

Company	AMAX EXPLORATION INCORPORATED
Well	MC COY 14-7
Field	DIXIE VALLEY
County	CHURCHILL
State	NEVADA
Location	23 N. 40 E.
Log No.	1962
Log Date	1962
Log Time	11:30
Log Depth	1450
Log Interval	10
Log Type	SCINT
Log Model	102-A
Log Serial	102-A
Log Length	1450
Log Weight	100
Log Diameter	1.75
Log Spacing	1/4
Log Strength	500 mc

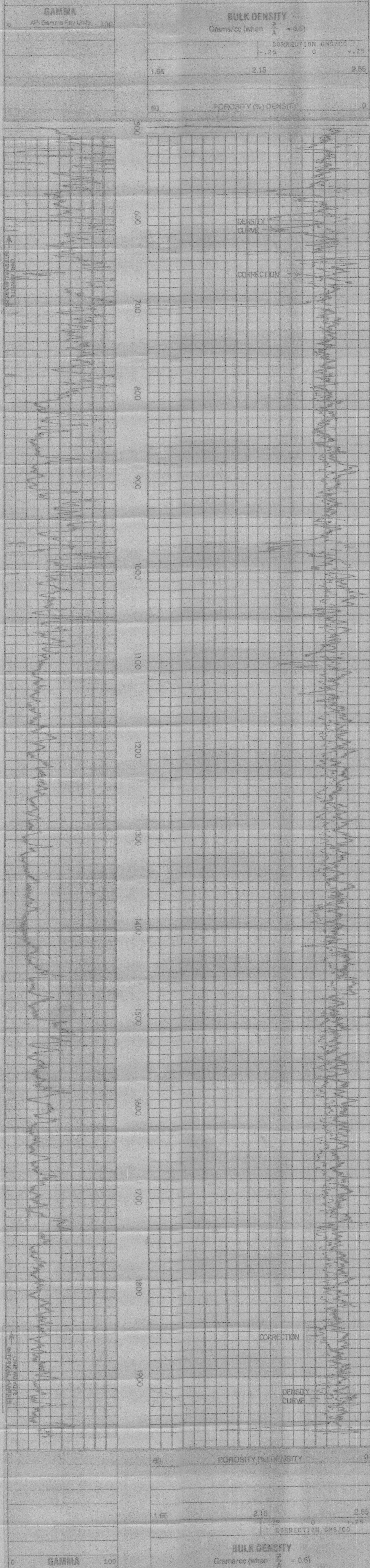
Run No.	015
Log Model	102-A
Log Serial	102-A
Log Length	1450
Log Weight	100
Log Diameter	1.75
Log Spacing	1/4
Log Strength	500 mc

Run No.	1962	From	505	To	25	T.C. Sec.	3	Serial Settings	100	Zero Div. L or R	0	API G.R. Units per Log Div	10	T.D. Sec	5	Serial Settings		Zero Div. L or R		Units per Log Div	05
---------	------	------	-----	----	----	-----------	---	-----------------	-----	------------------	---	----------------------------	----	----------	---	-----------------	--	------------------	--	-------------------	----

Service Ticket No 055299

Remarks

Wells does not guarantee the accuracy of any interpretation of log data, conversion of log data to physical rock parameters, or recommendations which may be given by Wells personnel or which may appear on this log or in any other form. Any user of such data, interpretations, conversions, or recommendations agrees that Wells is not responsible, except where due to gross negligence or willful misconduct, for any loss, damages, or expenses resulting from the use thereof.



AMAX EXPLORATION INCORPORATED  
 MC COY 14-7  
 DIXIE VALLEY  
 CHURCHILL COUNTY, NEVADA

T.D. LOGGED 1962  
 T.D. DRILLER 2010  
 T.D. WELEX 1964  
 ELEV: 61.4560

