

**DUAL INDUCTION
GUARD LOG**

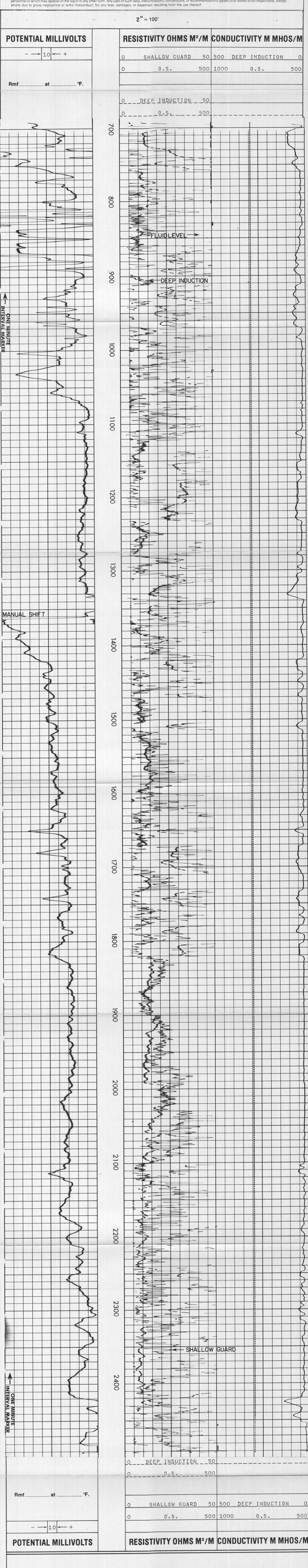
2" = 100'

COMPANY AMAX EXPLORATION, INCORPORATED OPER.
WELL 66-8
FIELD MCCOY PROPERTY
COUNTY CHURCHILL STATE NEVADA
LOCATION 1347 64' NORTH & 3253 06' EAST
OF THE SOUTHWEST CORNER (MDM)
C/DENS/N

PERMANENT DATUM 611.0
LOG MEASURED FROM 511.0
DATE 3-18-80
RUN NO. ONE
DEPTH-DRIER 2510
DEPTH-WELEX 2490
TOP LOG INTER. 702 @ 704
CASING-DRIER 6 5/8 @ 704
CASING-WELEX 702
BIT SIZE 6
TYPE FLUID IN HOLE CLAY BASE &
DENS. W/SC N/A N/A
PH. I FLUID LOSS N/A N/A
SOURCE OF SAMPLE 21 @ 59
F @ MEAS. TEMP. N/A @ N/A
F @ MEAS. TEMP. N/A @ N/A
SOURCE B. R. MEASURED N/A @ N/A
R @ BHT N/A @ N/A
TIME SINCE CIRC. N/A @ N/A
MAX. REC. TEMP. 209.3 @ BHT
EQUIP. I LOCATION 85866 I WOODLAND
RECORDED BY G. TAYLOR
WITNESSED BY J. GROSS

Change in Mud Type or Additional Samples		SCALE CHANGES		
Date Sample No.		Type Log	Depth	Scale Up Hole
Depth-Driener				
Type Fluid in Hole				
Dens. Visc.				
ph Fluid Loss				
Source of Sample				
R _m @ Meas. Temp.	@ °F	Run No.	Tool Type and No.	Pad Type
R _{nc} @ Meas. Temp.	@ °F	ONE	DIG-21675	FREE
Source: R _m R _{nc}				6" HOLE
R _m @ BHT	N/A @ N/A °F			
R _{nc} @ BHT	N/A @ N/A °F			
R _{nc} @ BHT	N/A @ N/A °F			

Service Ticket No 055289 Remarks:
 LOST CIRCULATION
 NOTE: AIR DRILLED HOLE. FILLED WITH GEL-WATER-LCM AFTER DRILLING.
 Welex does not guarantee the accuracy of any interpretation of log data, conversion of log data to physical rock parameters, or recommendations which may be given by Welex personnel or which may appear on the log or in any other form. Any user of such data, interpretations, conversions, or recommendations agrees that Welex is not responsible, except where due to gross negligence or willful misconduct, for any loss, damages, or expenses resulting from the use thereof.



POTENTIAL MILLIVOLTS	RESISTIVITY OHMS M ² /M	CONDUCTIVITY M MHOS/M
0 SHALLOW GUARD 50 500 DEEP INDUCTION 0		
0 0.S. 500 1000 0.S. 500		

POTENTIAL MILLIVOLTS	RESISTIVITY OHMS M ² /M	CONDUCTIVITY M MHOS/M
0 SHALLOW GUARD 50 500 DEEP INDUCTION 0		
0 0.S. 500 1000 0.S. 500		

AMAX EXPLORATION, INCORPORATED OPERATOR
 66-8
 MCCOY PROPERTY-WILDCAT
 CHURCHILL COUNTY, NEVADA

T.D. LOGGED 2490
 T.D. DRILLER 2510
 T.D. WELEX 2492