



DUAL INDUCTION WITH 2" LINEAR CORRELATION LOG

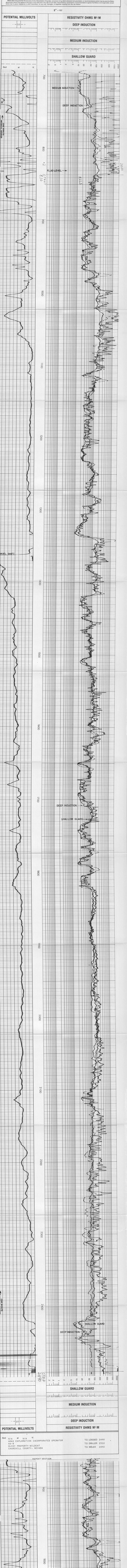
5-1000 COMPANY: AMAX EXPLORATION INCORPORATED OPERATOR: AMAX EXPLORATION INCORPORATED

WELL: 66-8 FIELD: MCCOY PROPERTY COUNTY: CHURCHILL STATE: NEV. LOCATION: MCCOY PROPERTY - WILDCAT COUNTY: CHURCHILL STATE: NEVADA

DATE: 6-6-8 DEPTH: 2310 TOPOLOGIC: 702 CENTER: 6 5/16 @ 704 BRISSE: CLAY BASE @

Run No. D16-21675 Tool Type and No. D16-21675 Pad Type FREE Other 6" HOLE

Remarks: Change in Mud Type or Additional Remarks: Service Ticket No. 55289



RESISTIVITY OHMS M^2/M DEEP INDUCTION MEDIUM INDUCTION SHALLOW GUARD POTENTIAL MILLIVOLTS Rmf at N/A

REPEAT SECTION BEFORE LOG AFTER LOG DUAL INDUCTION LOG CALIBRATION DATA

- 1. RECORD ELECTRICAL ZEROS. 2. RECORD INTERNAL TOOL CALIBRATION SIGNALS EQUIVALENT TO 2.0 OHMMETERS RESISTIVITY... 3. RECORD INTERNAL TOOL CALIBRATION SIGNALS EQUIVALENT TO 200 OHMMETERS RESISTIVITY...