

# R. F. SMITH CORP.

GEOTHERMAL DATA LOG

COMPANY Getty Oil Company

WELL KORA 52-21, U.S.L. U-27931

FIELD Roosevelt Hot Springs County Beaver

LOCATION SEC 21 T 27S R 5W

STATE Utah

COUNTRY U.S.A.

LOGGING GEOLOGISTS Dale A. Johnson James Hill John Dooley

DEPTH LOGGED FROM 184' TO 7500'  
DATE LOGGED FROM 2/7/78 TO 4/29/78  
ELEVATION 5860' (GL) + 22' KBD  DF  GR

PRESSURE INST. TYPE Silicon Chip TEMP. TYPE Thermocouple

- LITHOLOGY -


### ENGINEERING DATA

HOLE SIZE

17 3/8" to 7651'

12 3/4" to 2011'

8 3/4" to 7500'

CASING SIZE

20" to 184'

13 3/8" to 7651'

9 5/8" to 2032'

DRILLING RATE

FT/HR  MIN/FT

ROCK DENSITY

### AIR AND MUD DRILLING DATA

TEMPERATURE (°F)

IN \_\_\_\_\_

OUT \_\_\_\_\_

CO<sub>2</sub> ppm on Air \_\_\_\_\_

TOTAL MUD GAIN/LOSS \_\_\_\_\_

### REMARKS

DESCRIPTIONS

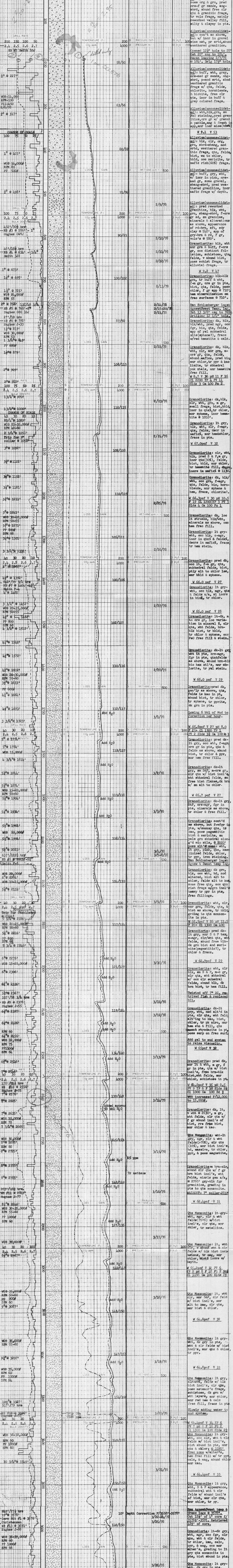
CORE RESULTS

SURVEYS

FORMATION TESTS

MUD AGITATOR

ELECTRIC AIR



10' Depth Correction F/5658' - 3578'

3/22-24/78

3/26/78