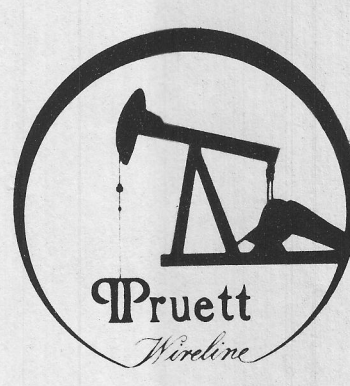


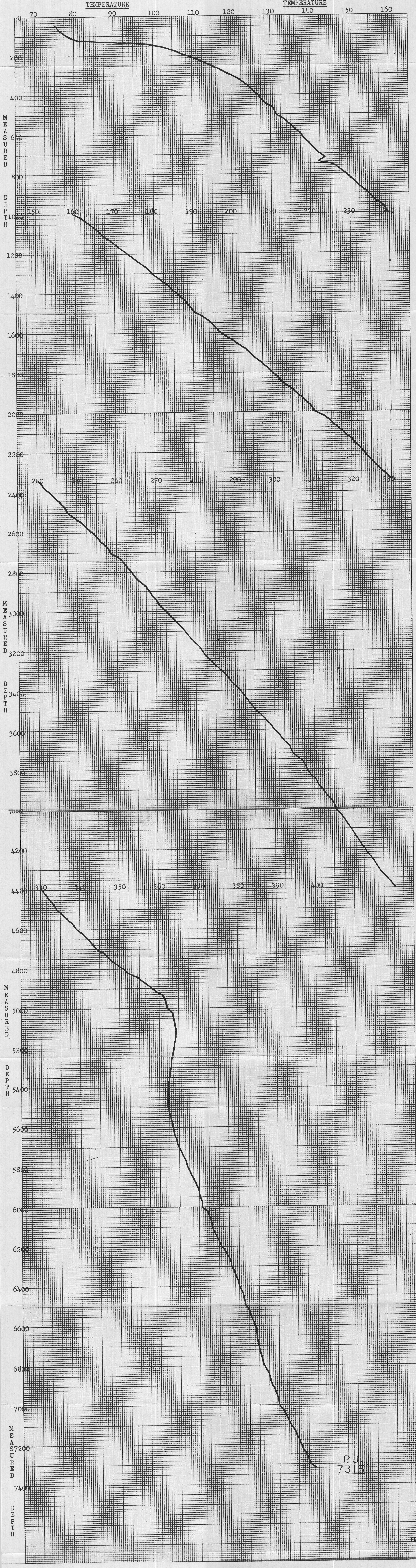
PRUETT WIRELINE SERVICE

8915 ROSEDALE HWY., BAKERSFIELD, CA 93308
(805) 589-2768



SUB-SURFACE TEMPERATURE SURVEY

COMPANY	Getty Oil	FIELD	Milford	WELL NAME	KGRA 52-21
TOTAL DEPTH	7500'	WELL STATUS	Static	BOMB HUNG @	7315' *
CASING	8 5/8" @ 2023'	CASING PRESSURE	--	TIME ON BOTTOM	2:07pm
LINE	none	TUBING PRESSURE	--	TIME OFF BOTTOM	3:07pm
PERFORATIONS	none	ZONE	none	SHUT IN	none
MPP	none	MAX. °F		ON PRODUCTION	none
TUBING DETAIL	none			PURPOSE	Traverse Temperature Survey **



SURVEY DATA

DEPTH	TEMPERATURE	DEPTH	TEMPERATURE	DEPTH	TEMPERATURE	DEPTH	TEMPERATURE
40	75.2	1860	212.8	3580	303.7	5520	362.5
60	75.8	1880	214.7	3600	304.1	5540	362.7
80	77.0	1900	215.5	3720	304.7	5560	363.0
100	78.6	1920	216.7	3740	305.8	5580	363.2
120	81.0	1940	218.0	3760	307.1	5600	363.4
140	97.6	1960	219.2	3780	307.8	5620	363.6
160	103.3	1980	220.0	3800	308.2	5640	363.8
180	106.3	2000	220.4/221.2	3820	308.8	5660	364.1
200	108.8	2020	223.3	3840	309.7	5680	364.2
220	111.6	2040	224.5	3860	310.6	5700	364.7
240	113.8	2060	225.3	3880	311.2	5720	365.4
260	116.2	2080	226.8	3900	312.1	5740	365.8
280	118.0	2100	227.8	3920	312.7	5760	366.5
300	120.2	2120	228.8	3940	313.6	5780	366.7
320	122.2	2140	230.3	3960	314.4	5800	366.9
340	123.6	2160	231.1	3980	314.9	5820	367.6
360	124.8	2180	232.3	4000	315.3/315.9	5840	368.2
380	125.6	2200	232.9	4020	316.6	5860	368.7
400	126.8	2220	234.0	4040	317.2	5880	369.1
420	127.4	2240	234.8	4060	318.1	5900	369.6
440	128.6	2260	235.8	4080	318.7	5920	370.0
460	130.4	2280	236.8	4100	319.4	5940	370.2
480	131.0	2300	237.9	4120	320.0	5960	370.4
500	131.4/132.2	2320	239.1	4140	320.7	5980	370.7
520	133.4	2340	240.3	4160	321.3	6000	370.7/371.1
540	134.4	2360	241.3	4180	321.9	6020	372.2
560	135.6	2380	242.2	4200	322.8	6040	372.4
580	136.6	2400	243.4	4220	323.5	6060	372.9
600	137.6	2420	244.4	4240	324.3	6080	373.1
620	138.6	2440	245.4	4260	325.2	6100	373.3
640	139.6	2460	246.5	4280	325.6	6120	373.7
660	140.4	2480	247.3	4300	326.2	6140	374.2
680	141.2	2500	247.7/248.5	4320	326.9	6160	374.6
700	142.6	2520	249.3	4340	328.0	6180	375.1
720	143.8	2540	250.8	4360	328.8	6200	375.5
740	144.2	2560	251.8	4380	329.7	6220	376.4
760	146.4	2580	252.8	4400	330.5	6240	377.0
780	147.6	2600	253.9	4420	331.4	6260	377.5
800	149.0	2620	255.1	4440	332.1	6280	377.9
820	150.0	2640	255.8	4460	333.1	6300	378.1
840	151.2	2660	256.8	4480	333.8	6320	378.8
860	152.2	2680	257.9	4500	334.2/334.8	6340	379.2
880	153.6	2700	258.5	4520	335.7	6360	379.5
900	154.6	2720	259.8	4540	336.6	6380	379.9
920	155.6	2740	261.4	4560	337.5	6400	380.1
940	156.8	2760	261.9	4580	338.5	6420	380.6
960	158.4	2780	262.9	4600	339.2	6440	381.0
980	159.0	2800	263.8	4620	340.7	6460	381.2
1000	159.6/160.2	2820	264.6	4640	341.4	6480	381.4
1020	161.8	2840	265.4	4660	342.5	6500	381.4/382.1
1040	163.2	2860	266.7	4680	343.4	6520	382.6
1060	164.4	2880	267.7	4700	344.0	6540	382.8
1080	165.6	2900	268.4	4720	346.2	6560	383.2
1100	166.8	2920	269.0	4740	347.1	6580	383.7
1120	168.0	2940	270.1	4760	348.2	6600	383.9
1140	169.6	2960	270.7	4780	349.5	6620	384.4
1160	170.7	2980	271.5	4800	351.1	6640	384.4
1180	172.1	3000	272.4/273.0	4820	352.0	6660	384.4
1200	173.4	3020	273.6	4840	354.4	6680	384.6
1220	174.7	3040	274.5	4860	355.5	6700	385.0
1240	175.9	3060	275.5	4880	357.2	6720	385.4
1260	177.4	3080	276.4	4900	358.3	6740	385.3
1280	178.7	3100	277.4	4920	359.7	6760	385.7
1300	179.5	3120	278.2	4940	361.2	6780	385.9
1320	181.0	3140	278.9	4960	361.6	6800	386.2
1340	182.2	3160	279.9	4980	361.9	6820	386.8
1360	183.5	3180	281.2	5000	362.1/362.5	6840	387.5
1380	184.5	3200	281.8	5020	363.4	6860	387.7
1400	185.8	3220	282.4	5040	363.6	6880	388.0
1420	187.1	3240	283.3	5060	363.8	6900	388.2
1440	188.1	3260	284.3	5080	364.1	6920	388.9
1460	188.9	3280	285.4	5100	364.3	6940	389.3
1480	189.8	3300	286.4	5120	364.3	6960	389.8
1500	190.4/191.3	3320	287.5	5140	364.1	6980	390.0
1520	192.7	3340	288.3	5160	364.8	7000	390.0/390.7
1540	194.0	3360	289.2	5180	363.1	7020	391.1
1560	195.0	3380	290.4	5200	363.8	7040	391.6
1580	195.7	3400	291.3	5220	363.6	7060	392.0
1600	196.9	3420	292.1	5240	363.4	7080	392.5
1620	198.4	3440	292.7	5260	363.2	7100	392.9
1640	200.3	3460	293.6	5280	363.0	7120	393.6
1660	201.5	3480	294.4	5300	363.0	7140	394.3
1680	203.0	3500	295.1/295.7	5320	362.7	7160	394.7
1700	204.3	3520	296.4	5340	362.7	7180	395.2
1720	205.3	3540	297.4	5360	362.5	7200	395.6
1740	206.4	3560	298.3	5380	362.3	7220	396.1
1760	207.4	3580	299.2	5400	362.1	7240	396.7
1780	208.9	3600	299.8	5420	362.1	7260	397.2
1800	209.9	3620	301.1	5440	362.1	7280	397.6
1820	211.0	3640	301.7	5460	362.1	7300	398.1
1840	212.0	3660	302.6	5480	362.1	7315	399.2
				5500	362.1/362.5		

COMMENTS: *Final Stop at 7315' for 1 hour - Temperature remained the same.
**Survey traversed 20' per minute.

Instrument Serial Number 31, calibrated 10-28-76.
Stop checks at 500' intervals indicated in Survey Data.

D Pruett
C Trott