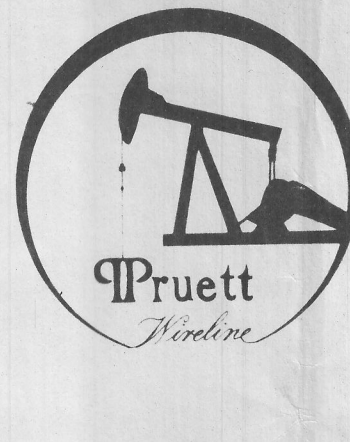


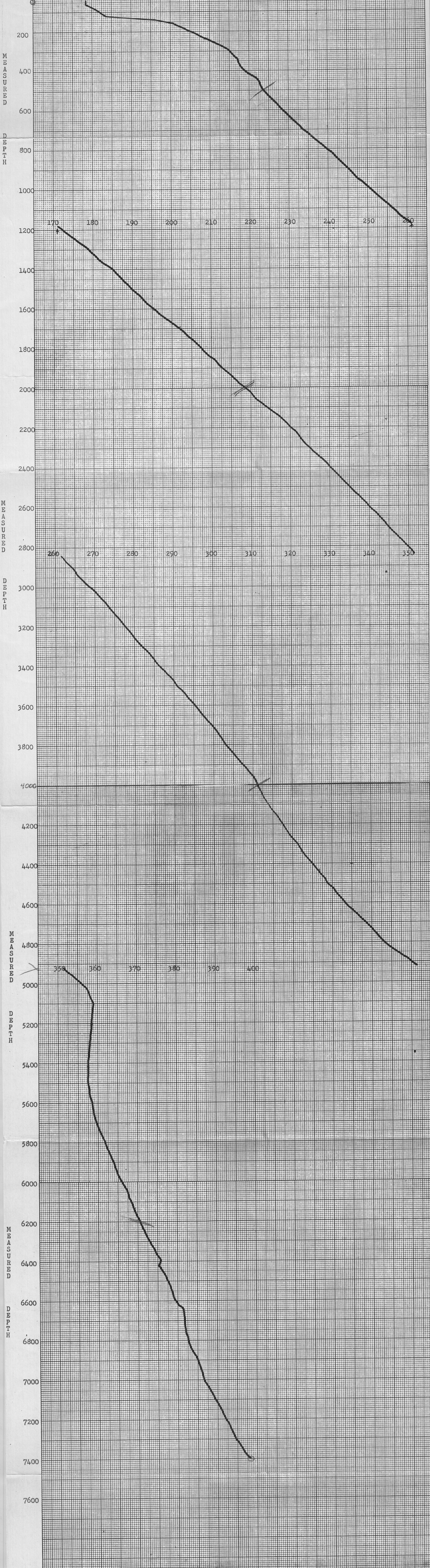
PRUETT WIRELINE SERVICE

8915 ROSEDALE HWY., BAKERSFIELD, CA 93308
(805) 589-2768



SUB-SURFACE TEMPERATURE SURVEY

COMPANY Getty Oil FIELD Milford WELL NAME KGRA 52-21
 TOTAL DEPTH 7500' WELL STATUS Static BOMB HUNG @ none DATE June 9, 1978
 CASING 8 5/8" @ 2023' CASING PRESSURE 0 TIME ON BOTTOM 12:10pm ELEMENT RANGE 50-740'
 LINER none TUBING PRESSURE 0 TIME OFF BOTTOM 12:30pm ZERO POINT 22.0'
 PERFORATIONS none ZONE none SHUT IN none ELEVATION none
 MPP none MAX °F 398.3 ON PRODUCTION none PICKUP 7400'
 TUBING DETAIL none PURPOSE Traverse Temperature Survey **



SURVEY DATA

DEPTH	TEMPERATURE	DEPTH	TEMPERATURE	DEPTH	TEMPERATURE	DEPTH	TEMPERATURE
40	88.4	1900	212.8	3760	301.7	5620	358.8
60	88.4	1920	213.9	3780	302.4	5640	359.0
80	90.4	1940	215.1	3800	303.2	5660	359.2
100	92.1	1960	216.3	3820	304.1	5680	359.4
120	93.6	1980	217.4	3840	305.0	5700	359.7
140	106.1	2000	218.6/219.6	3860	305.8	5720	360.1
160	110.8	2020	220.0	3880	306.7	5740	360.5
180	113.2	2040	220.6	3900	307.5	5760	361.0
200	115.2	2060	221.5	3920	308.4	5780	361.4
220	117.4	2080	223.3	3940	309.3	5800	361.9
240	119.6	2100	224.3	3960	310.1	5820	362.3
260	121.8	2120	225.6	3980	310.8	5840	362.7
280	123.6	2140	227.2	4000	311.2/311.6	5860	363.2
300	125.0	2160	228.2	4020	311.8	5880	363.6
320	126.0	2180	229.4	4040	312.3	5900	364.1
340	127.2	2200	230.3	4060	312.7	5920	364.3
360	127.4	2220	231.5	4080	313.3	5940	364.7
380	128.0	2240	232.3	4100	314.0	5960	365.2
400	129.0	2260	232.9	4120	314.6	5980	365.6
420	130.4	2280	233.8	4140	315.5	6000	366.0/366.5
440	132.0	2300	235.0	4160	316.4	6020	366.7
460	132.8	2320	235.8	4180	317.0	6040	367.4
480	133.2	2340	237.0	4200	317.6	6060	367.8
500	133.6/134.0	2360	238.3	4220	318.3	6080	368.0
520	134.6	2380	239.3	4240	318.9	6100	368.5
540	135.8	2400	240.1	4260	319.6	6120	368.9
560	136.8	2420	241.1	4280	320.4	6140	369.3
580	137.6	2440	242.2	4300	321.3	6160	369.8
600	138.6	2460	243.0	4320	321.9	6180	370.2
620	139.8	2480	244.0	4340	322.6	6200	370.7
640	140.8	2500	245.0/245.8	4360	323.2	6220	371.1
660	141.8	2520	246.1	4380	324.1	6240	371.5
680	143.0	2540	247.1	4400	325.0	6260	372.0
700	143.8	2560	247.9	4420	325.8	6280	372.4
720	145.2	2580	249.1	4440	326.7	6300	373.1
740	146.2	2600	250.2	4460	327.5	6320	373.7
760	147.4	2620	251.2	4480	328.4	6340	374.4
780	148.6	2640	252.2	4500	328.8/329.7	6360	374.8
800	149.8	2660	253.0	4520	330.1	6380	375.5
820	151.0	2680	253.9	4540	330.8	6400	375.9
840	152.0	2700	254.7	4560	331.6	6420	375.5
860	153.0	2720	255.6	4580	332.5	6440	375.9
880	154.0	2740	256.4	4600	333.3	6460	376.6
900	155.0	2760	257.7	4620	334.2	6480	377.3
920	156.0	2780	258.7	4640	335.3	6500	377.7/377.9
940	157.0	2800	259.6	4660	336.4	6520	378.1
960	158.2	2820	260.6	4680	337.4	6540	378.4
980	159.4	2840	261.4	4700	338.5	6560	378.8
1000	160.4/161.4	2860	262.1	4720	339.6	6580	379.2
1020	161.6	2880	263.3	4740	340.5	6600	379.7
1040	162.6	2900	264.4	4760	341.4	6620	380.3
1060	163.8	2920	265.2	4780	342.3	6640	381.4
1080	165.0	2940	265.6	4800	343.2	6660	381.7
1100	166.2	2960	266.7	4820	344.5	6680	381.9
1120	167.4	2980	267.7	4840	345.8	6700	382.7
1140	168.4	3000	268.8/269.8	4860	347.3	6720	382.1
1160	169.6	3020	270.1	4880	348.9	6740	382.9
1180	171.1	3040	270.9	4900	350.2	6760	382.1
1200	172.4	3060	271.9	4920	351.5	6780	382.6
1220	173.8	3080	273.0	4940	352.6	6800	382.8
1240	175.1	3100	273.6	4960	353.9	6820	383.2
1260	176.3	3120	274.5	4980	355.0	6840	383.5
1280	177.6	3140	275.3	5000	356.1/357.0	6860	384.1
1300	178.9	3160	276.1	5020	357.2	6880	384.8
1320	180.1	3180	277.0	5040	357.7	6900	385.3
1340	181.2	3200	277.8	5060	358.1	6920	385.5
1360	182.2	3220	278.7	5080	358.6	6940	385.9
1380	183.7	3240	279.5	5100	359.0	6960	386.2
1400	185.0	3260	280.3	5120	359.0	6980	386.4
1420	186.0	3280	281.2	5140	359.8	7000	386.5/386.8
1440	187.1	3300	282.0	5160	358.8	7020	387.3
1460	188.1	3320	283.1	5180	358.8	7040	388.0
1480	189.2	3340	284.1	5200	358.6	7060	388.4
1500	190.0/190.8	3360	284.8	5220	358.6	7080	389.1
1520	191.3	3380	285.6	5240	358.6	7100	389.5
1540	192.3	3400	286.4	5260	358.3	7120	390.2
1560	193.1	3420	287.5	5280	358.3	7140	390.7
1580	194.2	3440	288.3	5300	358.1	7160	391.1
1600	195.5	3460	289.4	5320	358.1	7180	391.6
1620	196.7	3480	290.2	5340	357.9	7200	392.2
1640	198.0	3500	290.8/291.5	5360	357.9	7220	392.9
1660	199.2	3520	291.9	5380	357.7	7240	393.4
1680	200.5	3540	292.9	5400	357.7	7260	393.8
1700	202.0	3560	293.6	5420	357.7	7280	394.3
1720	203.2	3580	294.4	5440	357.7	7300	394.7
1740	204.3	3600	295.3	5460	357.7	7320	395.4
1760	205.5	3620	296.1	5480	357.7	7340	396.1
1780	206.8	3640	297.0	5500	357.7/357.9	7360	396.7
1800	207.6	3660	297.9	5520	357.9	7380	397.4
1820	208.5	3680	298.7	5540	358.1	7400	398.3/398.3
1840	209.7	3700	299.6	5560	358.1		
1860	211.0	3720	300.4	5580	358.3		
1880	211.8	3740	301.1	5600	358.6		

COMMENTS: **Stop Checks at 500' Intervals indicated in Survey Data.
 Instrument Serial Number 31, calibrated 10-28-76.
 Survey traversed 20' per minute.
 Final Stop at 7400' for 20 minutes remained the same.