

1:200

Slumberger

ASCENSION # 1 SONIC/VDL

CSU Field Log

COMPANY: UNIVERSITY OF UTAH RESEARCH INSTITUTE  
WELL: ASCENSION # 1  
FIELD: ASCENSION ISLAND

LOCATION: ASCENSION ISLAND  
LATITUDE: 07 57 06 S  
LONGITUDE: 14 28 30 W

PERMANENT DATUM: M. S. L.  
ELEVATIONS:  
K83: 596.0 F  
K82: 593.0 F  
K81: 593.0 F  
K80: 593.0 F  
K79: 593.0 F  
K78: 593.0 F  
K77: 593.0 F  
K76: 593.0 F  
K75: 593.0 F  
K74: 593.0 F  
K73: 593.0 F  
K72: 593.0 F  
K71: 593.0 F  
K70: 593.0 F  
K69: 593.0 F  
K68: 593.0 F  
K67: 593.0 F  
K66: 593.0 F  
K65: 593.0 F  
K64: 593.0 F  
K63: 593.0 F  
K62: 593.0 F  
K61: 593.0 F  
K60: 593.0 F  
K59: 593.0 F  
K58: 593.0 F  
K57: 593.0 F  
K56: 593.0 F  
K55: 593.0 F  
K54: 593.0 F  
K53: 593.0 F  
K52: 593.0 F  
K51: 593.0 F  
K50: 593.0 F  
K49: 593.0 F  
K48: 593.0 F  
K47: 593.0 F  
K46: 593.0 F  
K45: 593.0 F  
K44: 593.0 F  
K43: 593.0 F  
K42: 593.0 F  
K41: 593.0 F  
K40: 593.0 F  
K39: 593.0 F  
K38: 593.0 F  
K37: 593.0 F  
K36: 593.0 F  
K35: 593.0 F  
K34: 593.0 F  
K33: 593.0 F  
K32: 593.0 F  
K31: 593.0 F  
K30: 593.0 F  
K29: 593.0 F  
K28: 593.0 F  
K27: 593.0 F  
K26: 593.0 F  
K25: 593.0 F  
K24: 593.0 F  
K23: 593.0 F  
K22: 593.0 F  
K21: 593.0 F  
K20: 593.0 F  
K19: 593.0 F  
K18: 593.0 F  
K17: 593.0 F  
K16: 593.0 F  
K15: 593.0 F  
K14: 593.0 F  
K13: 593.0 F  
K12: 593.0 F  
K11: 593.0 F  
K10: 593.0 F  
K9: 593.0 F  
K8: 593.0 F  
K7: 593.0 F  
K6: 593.0 F  
K5: 593.0 F  
K4: 593.0 F  
K3: 593.0 F  
K2: 593.0 F  
K1: 593.0 F

DATE: 31 MAY 87  
RUN NO: 1  
DEPTH-DRILLER: 9886.0 F  
DEPTH-LOGGER: 9906.0 F  
BITM. LOG INTERVAL: 2888.0 F  
TOP LOG INTERVAL: 6284.0 F  
CASING-LOGGER: 1706.0 F  
CASING-DRILLER: 4548.0 F  
CASING-LOGGER: 2544.0 F  
CASING-DRILLER: 11 3/4" L.B./F. 25800 L.B./F.  
BIT SIZE: 14 9/16" 10 5/8" 6 3/4"  
BIT DEPTH: 1780.0 F 4605.0 F 9886.0 F

OTHER SERVICES-  
TEMP  
GR

TYPE FLUID IN HOLE: FORMATION WATER(SALINE)  
TIME CIRC. STOPPED: 19100 30/5  
TIME LOGGER ON BTH.: 13140 31/5  
MAX. REC. TEMP: 436.0 DEGF  
LOGGING UNIT NO: 773  
LOGGING UNIT LOC: ASC  
RECORDED BY: DAVID WYLLIE  
WITNESSED BY: MR DENNIS NIELSON

REMARKS:  
MAXIMUM DEVIATION 38 DEG @ 9656 FT.  
ZONE BETWEEN 8600 AND 7500 FT. CEMENTED OFF BECAUSE OF CDB.  
WELL LOGGED WITH FLUID FROM FORMATION IN HOLE.  
TENSION PRESENTED IN DEPTH TRACK IN INCREMENTS OF 1000LB.  
VDL PRESENTED 1 FT DEEP DUE TO MEMORISATION OF OTHER CURVES.  
TOOL FAILED WHILE LOGGING REPEAT SECTION, HENCE NON ATTACHED  
OTHER SECTIONS OF HOLE GAVE TOO MUCH NOISE TO BE LOGGED.  
TEMPERATURES @ 9000 FT WERE 434, 435, 436 DEG F.

EQUIPMENT NUMBERS-  
SLS L 116 SLC C 128 SLM DA 1800 GEU 2718  
CPU 4704 CPU 4704

ALL INTERPRETATIONS ARE OPINIONS BASED ON INFERENCES FROM ELECTRICAL OR OTHER MEASUREMENTS AND WE CANNOT, AND DO NOT GUARANTEE THE ACCURACY OR CORRECTNESS OF ANY INTERPRETATIONS, AND WE SHALL NOT, EXCEPT IN THE CASE OF GROSS OR WILLFUL NEGLIGENCE ON OUR PART, BE LIABLE OR RESPONSIBLE FOR ANY LOSS, COSTS, DAMAGES OR EXPENSES INCURRED OR SUSTAINED BY ANYONE RESULTING FROM ANY INTERPRETATION MADE BY ANY OF OUR OFFICERS, AGENTS OR EMPLOYEES. THESE INTERPRETATIONS ARE ALSO SUBJECT TO OUR GENERAL TERMS AND CONDITIONS AS SET OUT IN OUR CURRENT PRICE SCHEDULE.

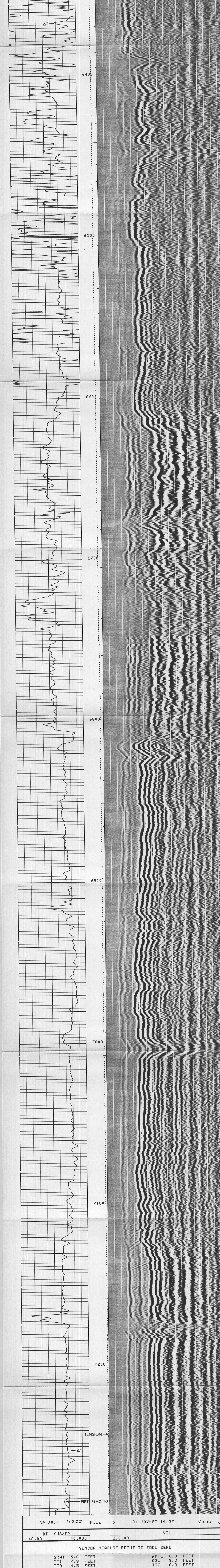
CP 28.4 FILE 0 31-MAY-87 05:07

SONI SUMM :  
SONI STAT PUMI TUNI VALU  
LWDD DT \* \* \* \* \*  
TOD ALLO \* \* \* \* \*  
TC \* \* \* \* \*  
HFS F F \* \* \* \* \*  
HFD 10 F \* \* \* \* \*  
VDLD \* \* \* \* \*  
HFM 1 \* \* \* \* \*  
CBL 2 \* \* \* \* \*  
AMPL \* \* \* \* \*  
CBLG US US 35 US \* \* \* \* \*  
ASGL \* \* \* \* \*  
FD DISA \* \* \* \* \*  
SGH US US 40 US \* \* \* \* \*  
FMSG US US 400 US \* \* \* \* \*  
NMSG US US 250 US \* \* \* \* \*  
AMSG US US 150 US \* \* \* \* \*  
SGAD DISA \* \* \* \* \*  
NC ALLO \* \* \* \* \*  
DETE \* \* \* \* \*  
MGAI E2 \* \* \* \* \*  
GAIN \* \* \* \* \*  
AC ALLO \* \* \* \* \*  
DG4W \* \* \* \* \*  
DG3W /1 \* \* \* \* \*  
DG2W /1 \* \* \* \* \*  
DG1W /1 \* \* \* \* \*  
DG /1 \* \* \* \* \*  
RATE HZ HZ 20 HZ \* \* \* \* \*  
TOA DISA \* \* \* \* \*  
MODE \* \* \* \* \*

EVENT MARK SUMMARY:  
OUTPUT INTERVAL DEPTH TRACK  
BETWEEN PIPS EDGE  
ITT .00100000 S RIGHT EDGE

DT (US/F) 140.00 40.000 VDL 200.00 2200.0

CP 28.4 1:200 FILE 5 31-MAY-87 15:19 MAIN LOG



CP 28.4 1:200 FILE 5 31-MAY-87 14:37 MAIN LOG

SENSOR MEASURE POINT TO TOOL ZERO  
SRAT 5.8 FEET AMPL 8.3 FEET  
TT1 7.3 FEET CBL 8.3 FEET  
TT2 4.4 FEET TT3 8.3 FEET  
TT 8.3 FEET TT4 3.5 FEET  
SLTT 8.3 FEET TT 8.3 FEET  
TENS 3.5 FEET SCBL 8.3 FEET  
NDIS 3.5 FEET

PARAMETERS  
NAME VALUE UNIT NAME VALUE UNIT  
CDTS 100.000 SPFS R-H  
DTF 189.000 US/F DTM 56.0000 US/F  
DSIN 5 DDLE 200 DDLEL 200  
BHS DPEN 6.25000 IN DHCD 512

Slumberger

ASCENSION # 1 SONIC/VDL

CSU Field Log