

1:200
Schlumberger
ASCENSION # 1 DIPMETER (RUN 2)



COMPANY: UNIVERSITY OF UTAH RESEARCH INSTITUTE
WELL: ASCENSION # 1
FIELD: ASCENSION ISLAND
LOCATION: SOUTH ATLANTIC
LATITUDE: 07 57 06 S
LONGITUDE: 14 28 30 W
PERMANENT DATUM: M. S. L.
ELEV. OF PERM. DATUM: 0.0 F
LOG MEASURED FROM: KB
DRG. MEASURED FROM: KB
ELEVATIONS -
ELEV. OF PERM. DATUM: 596.0 F
D.F.: 595.0 F
G.I.: 573.0 F
PROGRAM
TDS NO.
SERVISE
ORDER NO:
ASC 00387

DATE: 4 JUN 87
RUN NO: 2

DEPTH-DRILLER: 10178.0 F
DEPTH-LOGGER: 8030.0 F
BTM. LOG INTERVAL: 8008.0 F
TDP LOG INTERVAL: 7605.0 F
CASING-DRILLER: 1706.0 F
CASING-LOGGER: 4548.0 F
CRSING: 11 3/4"
47.0000 LB/F 26.4000 LB/F
BIT WEIGHT: 10 3/8"
1780.0 F 4805.0 F
DEPTH: 1280.0 F 10172.0 F

OTHER SERVICES -
TEMP

TYPE FLUID IN HOLE: SALT WATER
TIME CIRC. STOPPED: 06:00 02/06
TIME LOGGER ON BTM.: 08:20 04/06
MAX. REC. TEMP: 359.0 DEGF
LOGGING UNIT NO: 773
LOGGING UNIT LOC: ASC
RECORDED BY: DAVID MYLLIE
WITNESSED BY: MR. DENNIS NIELSON

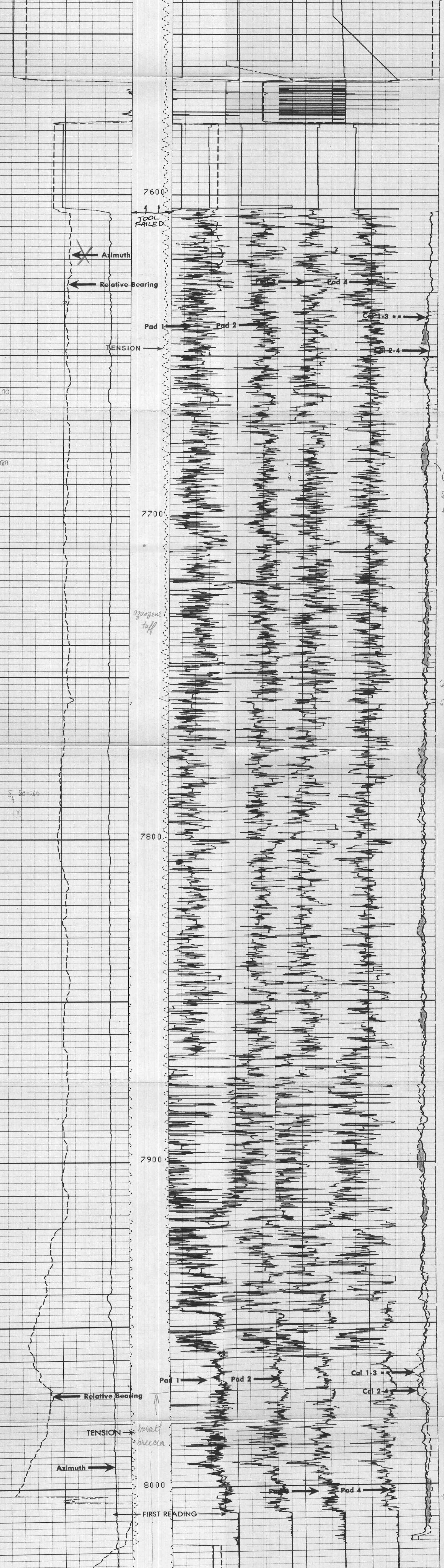
REMARKS:
MAXIMUM DEVIATION 38 DEG @ 9656 FT.
TENSION PRESENTED IN DEPTH TRACK IN INCREMENTS OF 1000 LB
MAGNETIC DECLINATION -20 DEGREES (CLIENT)
DEVIATION NOT WORKING . DEVIATION SURVEY FROM CLIENT
ATTACHED TO LOG
NOTE CALIPER 1-3 POTENTIOMETER FAILING AT TOP OF LOG,
CALIPER REMAINED OPEN.

EQUIPMENT NUMBERS-
HDS H 837 HDM L 818 HDH E 851 HDE F 1726
DAM A 996 GEU 2718 CPU 4704

ALL INTERPRETATIONS ARE OPINIONS BASED ON INFERENCES FROM ELECTRICAL OR
OTHER MEASUREMENTS AND WE CANNOT, AND DO NOT GUARANTEE THE ACCURACY OR
CORRECTNESS OF ANY INTERPRETATIONS, AND WE SHALL NOT, EXCEPT IN THE CASE
OF GROSS OR WILLFUL NEGLIGENCE ON OUR PART, BE LIABLE OR RESPONSIBLE FOR
ANY LOSS, COSTS, DAMAGES OR EXPENSES INCURRED OR SUSTAINED BY ANYONE
RESULTING FROM ANY INTERPRETATION MADE BY ANY OF OUR OFFICERS, AGENTS OR
EMPLOYEES. THESE INTERPRETATIONS ARE ALSO SUBJECT TO OUR GENERAL TERMS
AND CONDITIONS AS SET OUT IN OUR CURRENT PRICE SCHEDULE.

CP 28.4 FILE 0 04-JUN-87 09:31

RB (DEG) 360.00 C2 (IN) 6.0000
AZIM(DEG) 360.00 C1 (IN) 6.0000



CP 28.4 1:200 FILE 2 04-JUN-87 08:17 MAIN LOG

RB (DEG) 360.00 C2 (IN) 6.0000
AZIM(DEG) 360.00 C1 (IN) 6.0000

SENSOR MEASURE POINT TO TOOL ZERO

C1	0.0	FEET	C2	0.0	FEET
PP	0.0	FEET	TEMP	0.0	FEET
RC	0.0	FEET	EMEX	0.0	FEET
FEP2	0.0	FEET	REFE	0.0	FEET
DEVI	0.0	FEET	FEP1	0.0	FEET
AZIM	0.0	FEET	RB	0.0	FEET
RCD1	0.0	FEET	RC2	0.0	FEET
SHDT	0.0	FEET	TENS	0.0	FEET
FC3	0.0	FEET	FC4	0.0	FEET
FC1	0.0	FEET	FC2	0.0	FEET
FC0	0.0	FEET			

PARAMETERS

NAME	VALUE	UNIT	NAME	VALUE	UNIT
MCT	72		MDEC	-20	DEG
BHS	OPEN		STYP	HDSF	
BS	6.75000	IN			

INCLINOMETRY LIST

TIE DEPTH
MEAS. DEPTH = 0.0 FEET DEVI = 1.00 DEG TVD = 0.0 FEET

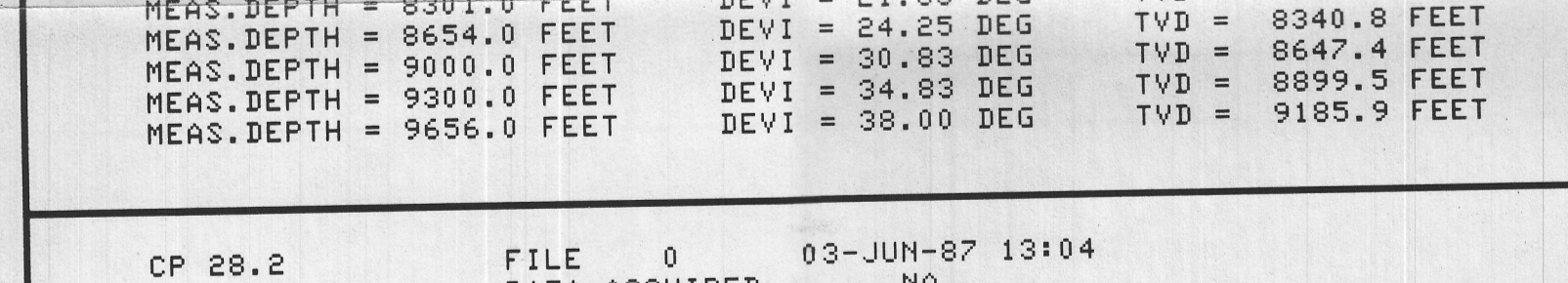
INCL DATA

MEAS. DEPTH = 263.0 FEET	DEVI = 1.00 DEG	TVD = 263.0 FEET
MEAS. DEPTH = 805.0 FEET	DEVI = 1.42 DEG	TVD = 804.8 FEET
MEAS. DEPTH = 2589.0 FEET	DEVI = 1.83 DEG	TVD = 2588.1 FEET
MEAS. DEPTH = 4005.0 FEET	DEVI = 2.83 DEG	TVD = 4002.9 FEET
MEAS. DEPTH = 4626.0 FEET	DEVI = 4.00 DEG	TVD = 4622.8 FEET
MEAS. DEPTH = 5000.0 FEET	DEVI = 6.83 DEG	TVD = 4995.1 FEET
MEAS. DEPTH = 5373.0 FEET	DEVI = 10.83 DEG	TVD = 5363.6 FEET
MEAS. DEPTH = 5745.0 FEET	DEVI = 14.42 DEG	TVD = 5726.6 FEET
MEAS. DEPTH = 6116.0 FEET	DEVI = 18.00 DEG	TVD = 6082.8 FEET
MEAS. DEPTH = 6488.0 FEET	DEVI = 21.83 DEG	TVD = 6432.5 FEET
MEAS. DEPTH = 6863.0 FEET	DEVI = 28.00 DEG	TVD = 6772.4 FEET
MEAS. DEPTH = 7236.0 FEET	DEVI = 34.00 DEG	TVD = 7092.0 FEET
MEAS. DEPTH = 7611.0 FEET	DEVI = 36.83 DEG	TVD = 7397.6 FEET
MEAS. DEPTH = 7987.0 FEET	DEVI = 41.83 DEG	TVD = 7724.5 FEET
MEAS. DEPTH = 8301.0 FEET	DEVI = 41.83 DEG	TVD = 8016.0 FEET
MEAS. DEPTH = 8654.0 FEET	DEVI = 24.25 DEG	TVD = 8340.8 FEET
MEAS. DEPTH = 9000.0 FEET	DEVI = 30.83 DEG	TVD = 8647.4 FEET
MEAS. DEPTH = 9300.0 FEET	DEVI = 34.83 DEG	TVD = 8899.5 FEET
MEAS. DEPTH = 9656.0 FEET	DEVI = 38.00 DEG	TVD = 9185.9 FEET

CP 28.2 FILE 0 03-JUN-87 13:04
DATA ACQUIRED NA

RB (DEG) 360.00 C2 (IN) 6.0000
AZIM(DEG) 360.00 C1 (IN) 6.0000

CP 28.4 FILE 5 03-JUN-87 12:47 PAD CHECK



CP 28.4 FILE 5 03-JUN-87 12:46

RB (DEG) 360.00 C2 (IN) 6.0000
AZIM(DEG) 360.00 C1 (IN) 6.0000

SENSOR MEASURE POINT TO TOOL ZERO

C1	0.0	FEET	C2	0.0	FEET
PP	0.0	FEET	TEMP	0.0	FEET
RC	0.0	FEET	EMEX	0.0	FEET
FEP2	0.0	FEET	REFE	0.0	FEET
DEVI	0.0	FEET	FEP1	0.0	FEET
AZIM	0.0	FEET	RB	0.0	FEET
RC1	0.0	FEET	RC2	0.0	FEET
SHDT	0.0	FEET	TENS	0.0	FEET
FC3	0.0	FEET	FC4	0.0	FEET
FC1	0.0	FEET	FC2	0.0	FEET
FC0	0.0	FEET			

PARAMETERS

NAME	VALUE	UNIT	NAME	VALUE	UNIT
MCT	72		MDEC	-20	DEG
BHS	OPEN		STYP	HDSF	
BS	6.75000	IN			

BEFORE SURVEY CALIBRATION SUMMARY

PERFORMED: 04-JUN-87 07:36
PROGRAM FILE: HDT (VERSION 28.4 85/11/11)

HDTF CALIPER CALIBRATION SUMMARY

	MEASURED	LARGE	CALIBRATED	SMALL	LARGE	UNITS
C1	8.16	20.5	6.00	16.0	IN	
C2	20.37	7.9	16.00	6.0	IN	

CP 28.4 FILE 2 04-JUN-87 07:36