

1:1000
Schlumberger

ASCENSION # 1 GR

Field Log



COMPANY: UNIVERSITY OF UTAH RESEARCH INSTITUTE
WELL: ASCENSION # 1
FIELD: ASCENSION ISLAND

OTHER SERVICES-
SDMC
TEMP.

LOCATION: ASCENSION ISLAND
SOUTH ATLANTIC
LATITUDE: 07 57 08 S
LONGITUDE: 14 22 30 W

ELEVATION DATUM: M. S. L.
ELEVATIONS-
ELEV. OF PERM. DATUM: 0.0 F
ELEV. OF BHS: 586.0 F
ELEV. OF LOG: 596.0 F
ELEV. OF LOG: 573.0 F
DRUG: MEASURED FROM: K8
GUL: 573.0 F
ORDER NO: 0187

DATE: 31 MAY 87
DEPTH-DRILLER: 9866.0 F
DEPTH-LOGGER: 9866.0 F
BIT: LOG INTERNAL: 8866.0 F
CUR. LOG INTERNAL: 913.0 F
CASING-DRILLER: 1706.0 F
CASING-LOGGER: 11 3/4" 4588.0 F
CASING: LOGGED: 7 5/8" 4588.0 F
BIT HEIGHT: 17-000 LB/F 28-4000 LB/F 6 3/4"
BIT DEPTH: 1260.0 F 4605.0 F 9866.0 F

TYPE FLUID IN HOLE: FORMATION WATER (SALINE)
 TIME CIRC. STOPPED: 19:00 30/5
 TIME LOGGER ON BTM.: 23:45 31/5
 MAX. REC. TEMP: 382.0 DEG F
 LOGGING UNIT NO: 773
 LOGGING UNIT LOC: ASC
 RECORDED BY: DAVID HYLIE
 WITNESSED BY: MR. DENNIS HIELSON

REMARKS:
 MAXIMUM DEVIATION 38 DEG @ 9656 FT.
 ZONE BETWEEN 8600 AND 7500 FT., CEMENTED OFF BECAUSE OF CO2
 WELL LOGGED WITH FLUID FROM FORMATION IN HDLE
 TENSION PRESENTED IN DEPTH TRACK IN INCREMENTS OF 1000 LB.
 GR LOGGED DOWN TO 8262, WHERE TOOL HELD UP.
 TEMPERATURES AT 6262 FT WERE 352, 352 380 DEG F.

EQUIPMENT NUMBERS-
 ATC CB 146 HEH B 82 ATM AA 432 GEU 2718
 CPU 4704

ALL INTERPRETATIONS ARE OPINIONS BASED ON INFERENCES FROM ELECTRICAL OR
 OTHER MEASUREMENTS AND WE CANNOT, AND DO NOT GUARANTEE THE ACCURACY OR
 CORRECTNESS OF ANY INTERPRETATIONS AND WE SHALL NOT, EXCEPT IN THE CASE
 OF GROSS OR WILLFUL NEGLIGENCE ON OUR PART, BE LIABLE OR RESPONSIBLE FOR
 ANY LOSSES, DAMAGES OR EXPENSES INCURRED OR SUSTAINED BY ANYONE
 RESULTING FROM ANY INTERPRETATION MADE BY ANY OF OUR OFFICERS, AGENTS OR
 EMPLOYEES. THESE INTERPRETATIONS ARE ALSO SUBJECT TO OUR GENERAL TERMS
 AND CONDITIONS AS SET OUT IN OUR CURRENT PRICE SCHEDULE.

CP 27.956 FILE 2 31-MAY-87 23:37

PARAMETERS					
NAME	VALUE	UNIT	NAME	VALUE	UNIT
PP	NDRM		DD	0.0	M
BS	6.75000	IN	BHS	OPEN	
WMUD	8.00000	LB/G			

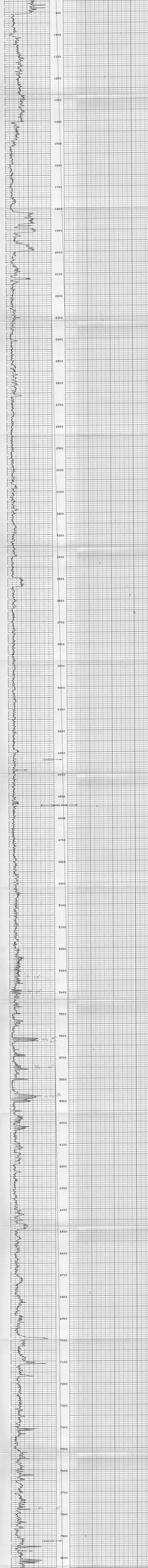
TAPE NOT MADE

SENSOR MEASURE POINT TO TOOL ZERO
 TENS 7.6 FEET GR 2.6 FEET

0.0 GR (GAPI) 100.00
 CP 27.956 FILE 5 01-JUN-87 13:46
 1:1000 DATA ACQUIRED 31-MAY-87 19:53 REPEAT SECTION



0.0 GR (GAPI) 100.00
 CP 27.956 FILE 103 01-JUN-87 13:27
 1:1000 DATA ACQUIRED 31-MAY-87 18:25 MAIN LOG



CP 27.956 FILE 103 01-JUN-87 13:42
 1:1000 DATA ACQUIRED 31-MAY-87 22:16 MAIN LOG

BEFORE SURVEY CALIBRATION SUMMARY
 PERFORMED BY: 31-MAY-87 18:05
 PROGRAM FILE: HELS (VERSION 27.956 00/00/00)

DETECTOR CALIBRATION SUMMARY
 ATTC MEASURED BKGD JIG CALIBRATED UNITS
 GR 26 141 135 GAPI
 CP 27.956 FILE 0 31-MAY-87 18:05