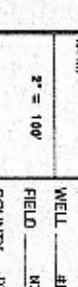


PETROLEUM INFORMATION

MIDLAND, TEXAS 79701

REFERENCE D 9056H

API NO. 7



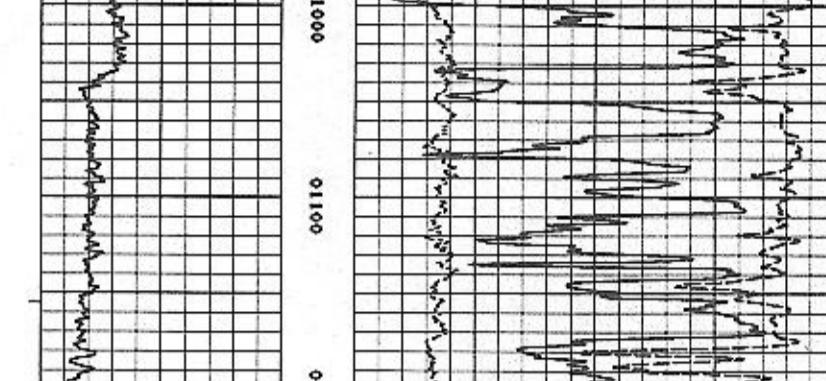
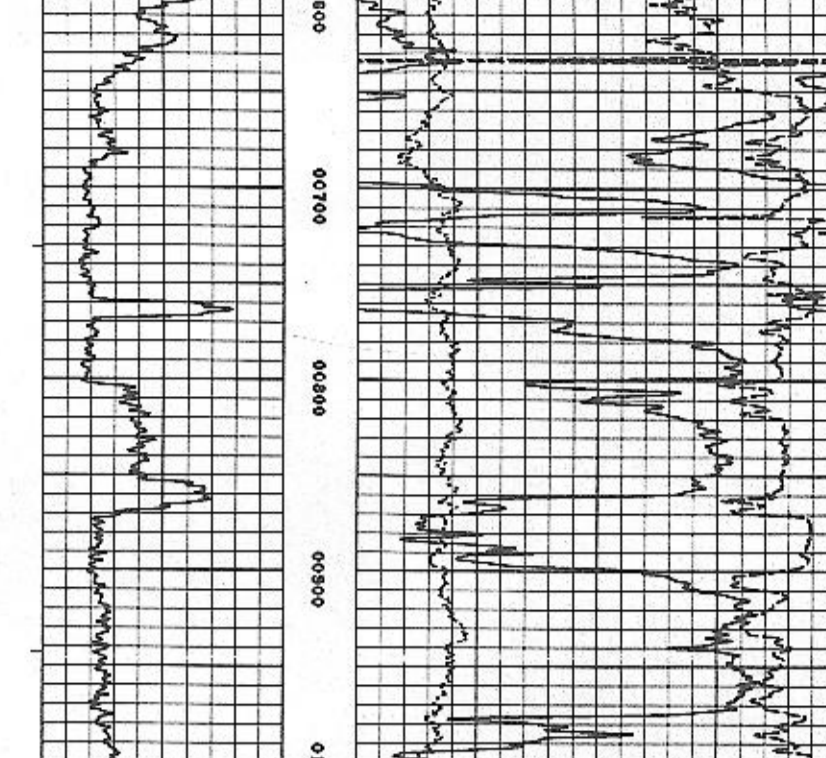
REPRODUCTION FOR RESALE IN WHOLE OR PART PROHIBITED

Deutscher Neutron Gamma Ray	
COMPANY: G.D. DEUTSCHER CORPORATION FIELD: HENDERSON COUNTY: HENDERSON STATE: TEXAS WELL: 4100 S. & 32 ND E. Rm. 200 LOCATION: 31 ST S. W. CORNER OF 32 ND E. & 31 ST S. W.	WELL NO.: 4100 COMPANY: G.D. DEUTSCHER CORPORATION FIELD: HENDERSON COUNTY: HENDERSON STATE: TEXAS WELL: 4100 S. & 32 ND E. Rm. 200 LOCATION: 31 ST S. W. CORNER OF 32 ND E. & 31 ST S. W.
DATE: 7-25-58 TIME: 14:49:26 RUNNER: J MODE: PLUMBING	DATE: 7-25-58 TIME: 14:49:26 RUNNER: J MODE: PLUMBING
LOG NO.: 245.3 LOG NO.: 85.5 LOG NO.: 245.7 LOG NO.: 85.5 LOG NO.: 245.7 LOG NO.: 85.5 LOG NO.: 245.7	LOG NO.: 245.3 LOG NO.: 85.5 LOG NO.: 245.7 LOG NO.: 85.5 LOG NO.: 245.7 LOG NO.: 85.5 LOG NO.: 245.7

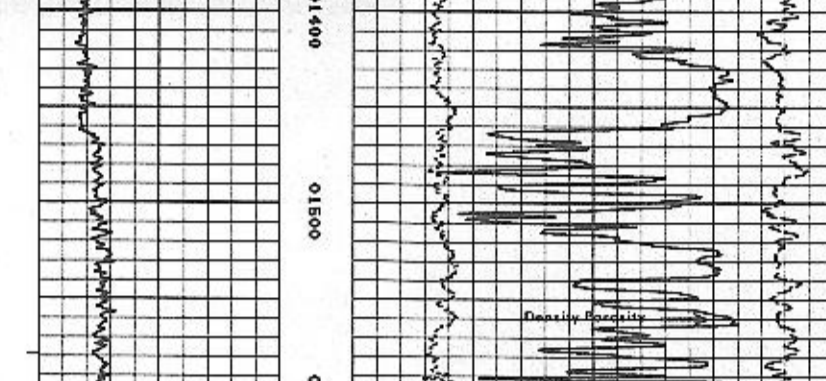
IN ORDER TO OBTAIN THE BEST RESULTS FROM THIS LOG, THE WELL SHOULD BE CLEANED AND THE LOGGING UNIT SHOULD BE CALIBRATED BEFORE LOGGING. THE LOGGING UNIT SHOULD BE CALIBRATED AT THE WELL AND THE LOGGING UNIT SHOULD BE CALIBRATED AT THE WELL.

REMARKS RUN (1)
 ON RECORDED IN SANDSTONE UNITS, NOT CORRECTED FOR CRIPING EFFECTS
 DENSILOG RUN WITH DRILL PIPE, NOT CORRECTED FOR CRIPING EFFECTS

LOG NO.	DATE	TIME	MODE
245.3	7-25-58	14:49:26	PLUMBING



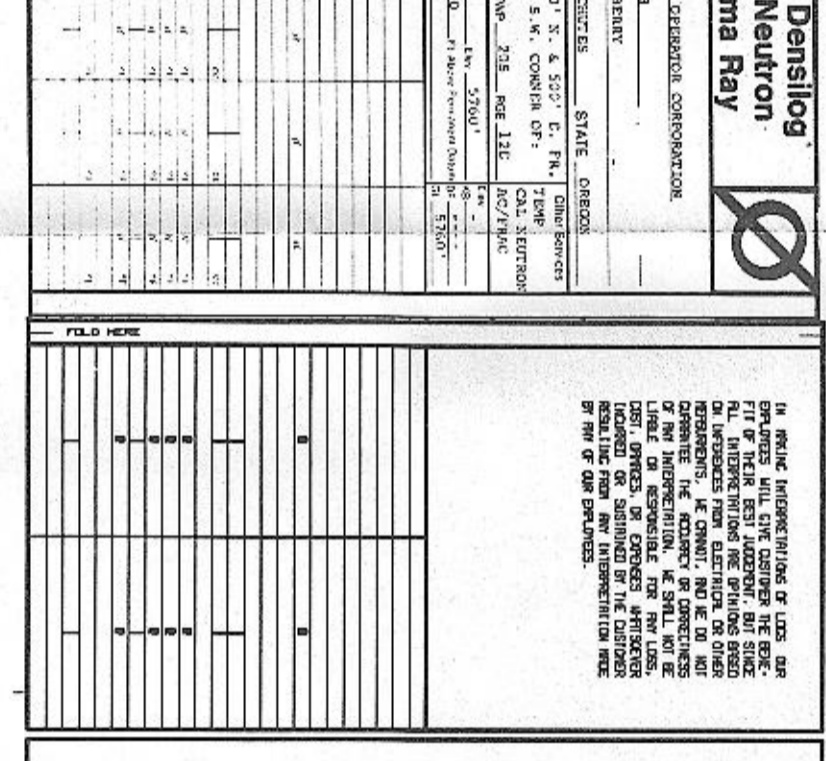
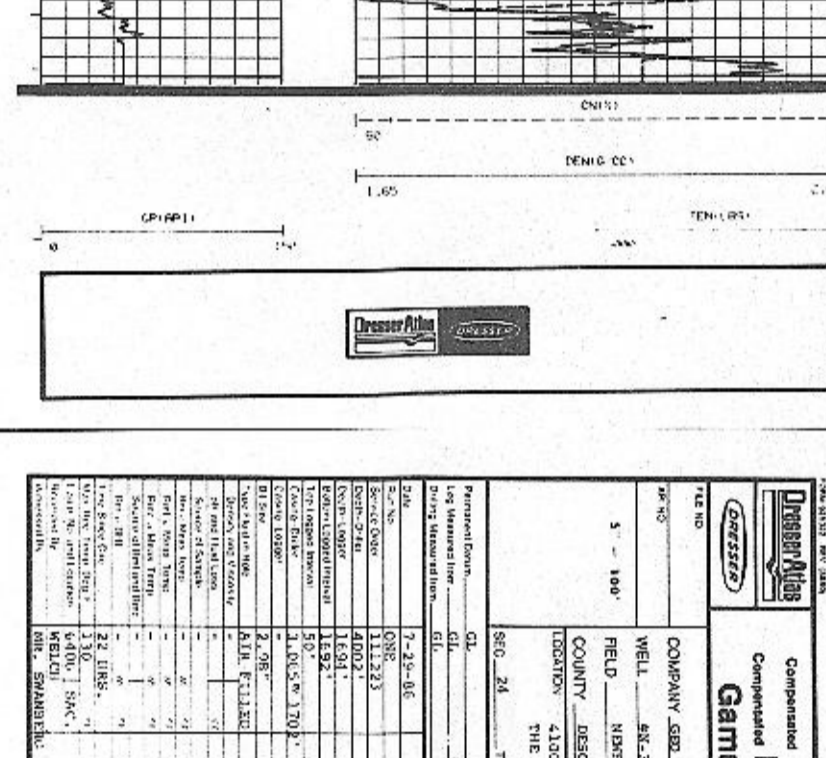
REPEAT SECTION



Deutscher Neutron Gamma Ray	
COMPANY: G.D. DEUTSCHER CORPORATION FIELD: HENDERSON COUNTY: HENDERSON STATE: TEXAS WELL: 4100 S. & 32 ND E. Rm. 200 LOCATION: 31 ST S. W. CORNER OF 32 ND E. & 31 ST S. W.	WELL NO.: 4100 COMPANY: G.D. DEUTSCHER CORPORATION FIELD: HENDERSON COUNTY: HENDERSON STATE: TEXAS WELL: 4100 S. & 32 ND E. Rm. 200 LOCATION: 31 ST S. W. CORNER OF 32 ND E. & 31 ST S. W.
DATE: 7-25-58 TIME: 14:49:26 RUNNER: J MODE: PLUMBING	DATE: 7-25-58 TIME: 14:49:26 RUNNER: J MODE: PLUMBING
LOG NO.: 245.3 LOG NO.: 85.5 LOG NO.: 245.7 LOG NO.: 85.5 LOG NO.: 245.7 LOG NO.: 85.5 LOG NO.: 245.7	LOG NO.: 245.3 LOG NO.: 85.5 LOG NO.: 245.7 LOG NO.: 85.5 LOG NO.: 245.7 LOG NO.: 85.5 LOG NO.: 245.7

REMARKS RUN (1)
 ON RECORDED IN SANDSTONE UNITS, NOT CORRECTED FOR CRIPING EFFECTS
 DENSILOG RUN WITH DRILL PIPE, NOT CORRECTED FOR CRIPING EFFECTS

LOG NO.	DATE	TIME	MODE
245.3	7-25-58	14:49:26	PLUMBING

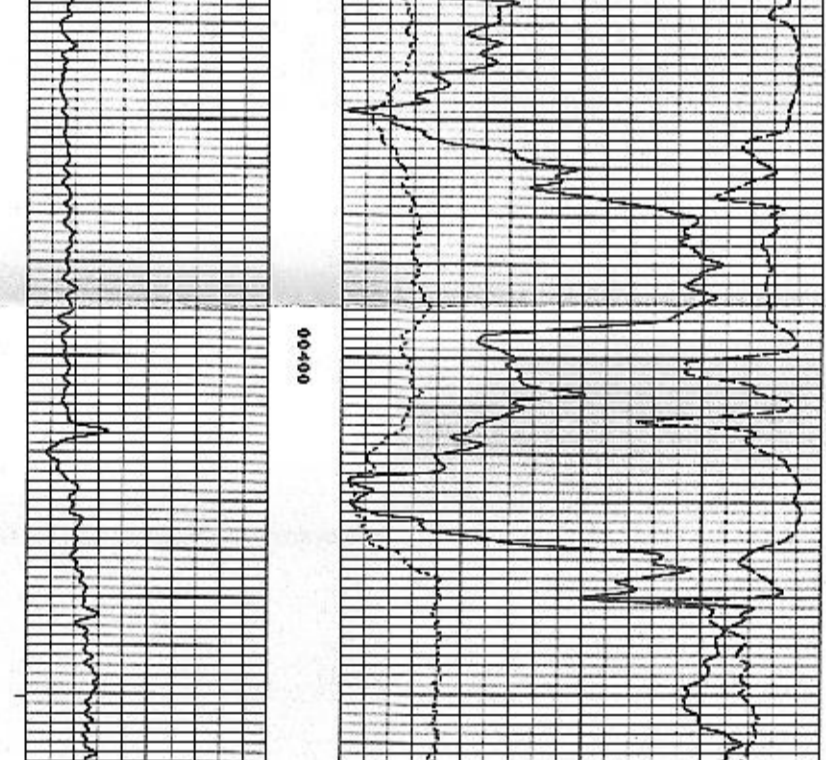
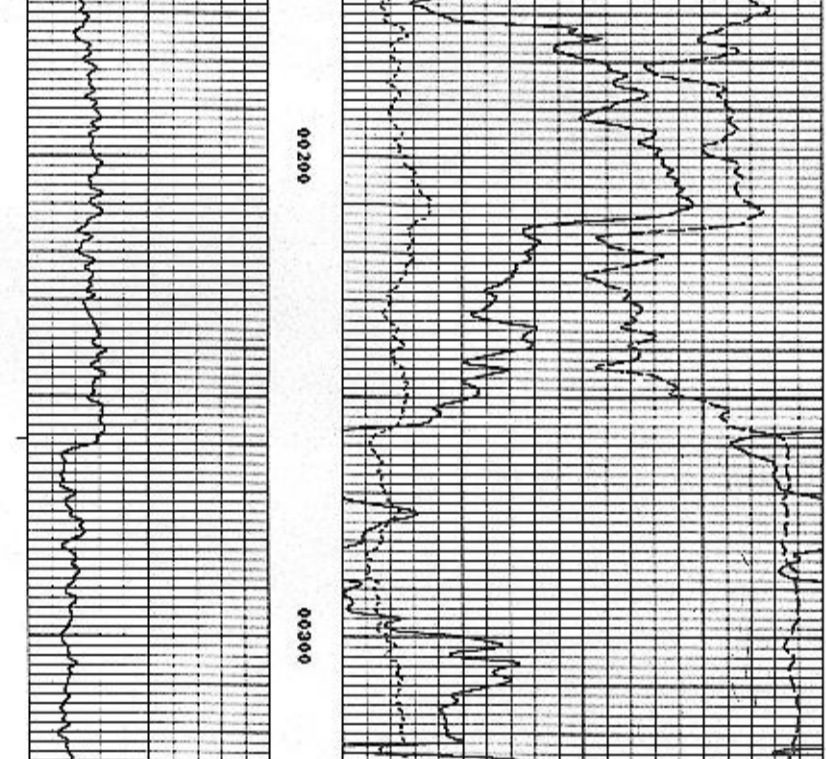


LOG MAKE ON ASSET NO. 24120 UNIT NO. 0716 SPILL TOOL
 CALIBRATION ENTERED ON 07-25-58 AT 17:02:16
 SOURCE FACTORS: 2.576 1.2611 2.081 0.193

LOG NO.	DATE	TIME	MODE
245.3	7-25-58	17:02:16	PLUMBING

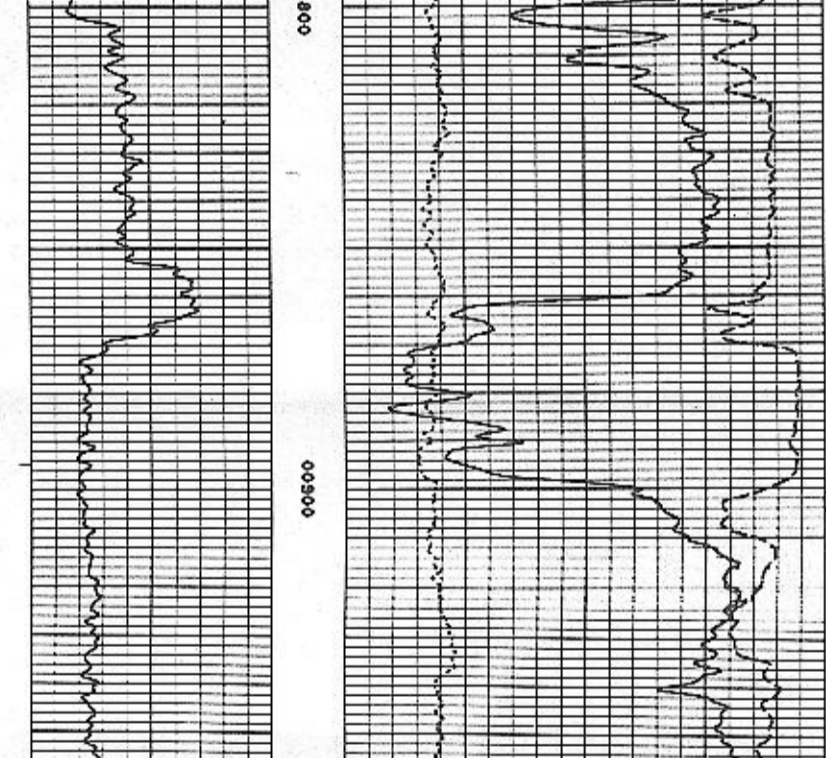
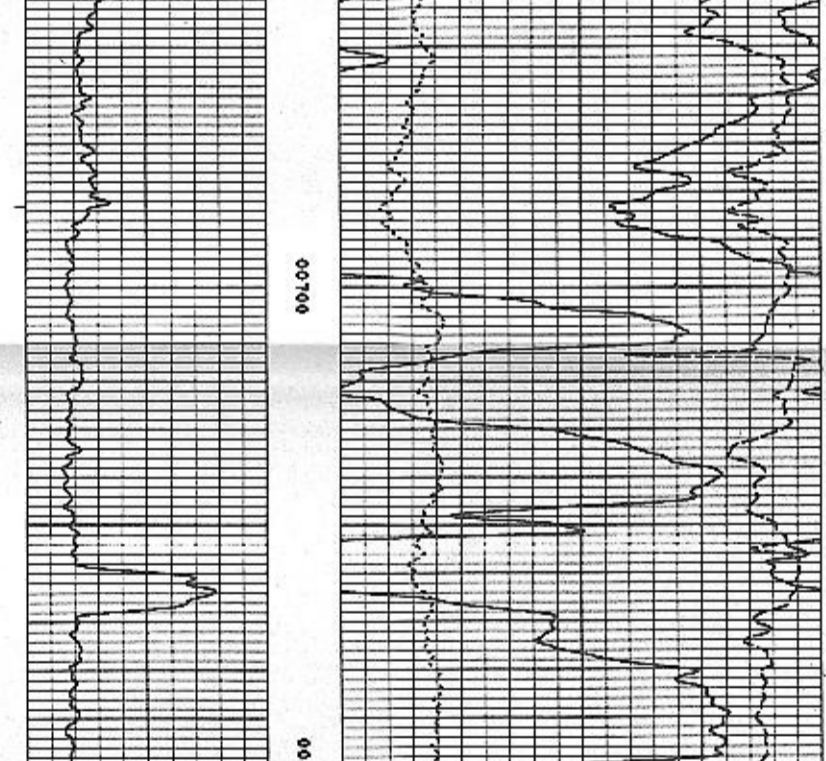
LOG MAKE ON ASSET NO. 24120 UNIT NO. 0716 SPILL TOOL
 CALIBRATION ENTERED ON 07-25-58 AT 17:02:16
 SOURCE FACTORS: 2.576 1.2611 2.081 0.193

LOG NO.	DATE	TIME	MODE
245.3	7-25-58	17:02:16	PLUMBING



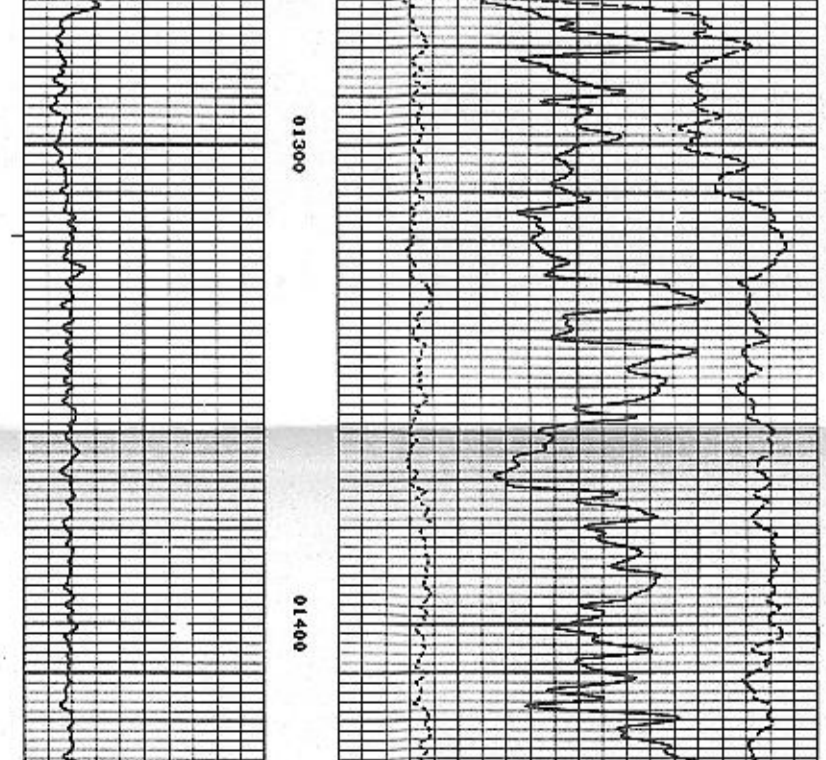
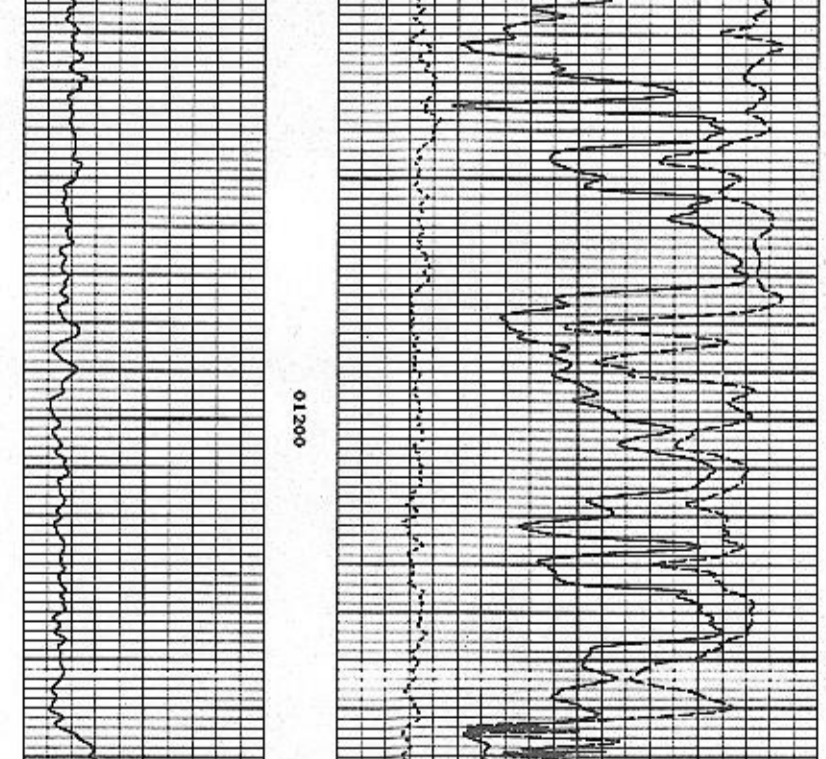
LOG MAKE ON ASSET NO. 24120 UNIT NO. 0716 SPILL TOOL
 CALIBRATION ENTERED ON 07-25-58 AT 17:02:16
 SOURCE FACTORS: 2.576 1.2611 2.081 0.193

LOG NO.	DATE	TIME	MODE
245.3	7-25-58	17:02:16	PLUMBING



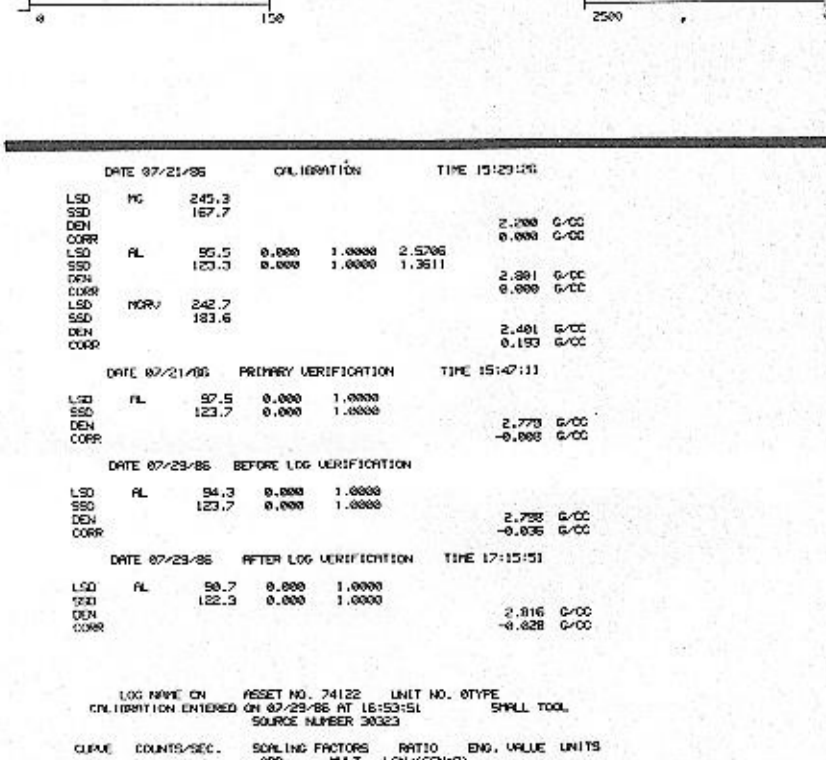
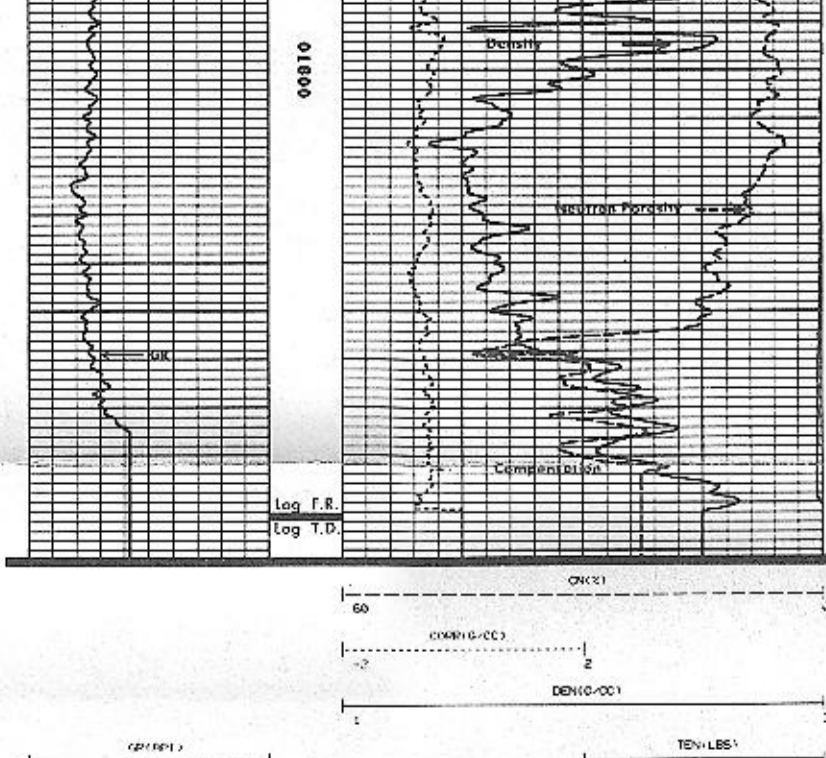
LOG MAKE ON ASSET NO. 24120 UNIT NO. 0716 SPILL TOOL
 CALIBRATION ENTERED ON 07-25-58 AT 17:02:16
 SOURCE FACTORS: 2.576 1.2611 2.081 0.193

LOG NO.	DATE	TIME	MODE
245.3	7-25-58	17:02:16	PLUMBING



LOG MAKE ON ASSET NO. 24120 UNIT NO. 0716 SPILL TOOL
 CALIBRATION ENTERED ON 07-25-58 AT 17:02:16
 SOURCE FACTORS: 2.576 1.2611 2.081 0.193

LOG NO.	DATE	TIME	MODE
245.3	7-25-58	17:02:16	PLUMBING



LOG MAKE ON ASSET NO. 24120 UNIT NO. 0716 SPILL TOOL
 CALIBRATION ENTERED ON 07-25-58 AT 17:02:16
 SOURCE FACTORS: 2.576 1.2611 2.081 0.193

LOG NO.	DATE	TIME	MODE
245.3	7-25-58	17:02:16	PLUMBING