

Caliper Log

FILE NO.	COMPANY	GEO OPERATOR CORPORATION
API NO.	WELL	#N-3
2" = 100'	FIELD	MEMBERRY
	COUNTY	DESCHUTES
	STATE	OREGON
	LOCATION	4100' N. & 500' E. OF S.W. CORNER OF: I.D.E.P. A/C/FRAC
		NEUBRON
Log Measured from	GI	5760'
Drilling Measured from	GI	5760'
Permanent Datum	GI	5760'
Date	7-28-86	
Run No.	ONE	
Service Order	11223	
Depth - Order	4002'	
Depth - Logger	4000'	
Bottom	3999'	
Top Logged	3999'	
Casing - Driller	3,065" @ 1102'	
Bit Size	2.98"	
Type Fluid in Hole	MUD	
Density and Viscosity		
pH and Fluid Loss		
Source of Sample		
Run @ Mass Temp.		
Run @ Mass Temp.		
Pressure		
Source of Fluid		
Run @ BHT		
Time since Circ.		
Max. Rec. Temp. Deg. F.	64.06	SAC.
Equip. No. and location		
Recorded by:	B. WELCH	
Witnessed by:	MR. SWANBERG	

In making interpretations of logs our employees will give Customer the benefit of their best judgment, but since all interpretations are opinions based on inferences from electrical or other measurements, we cannot and we do not guarantee the accuracy or the correctness of any interpretation. We shall not be liable or responsible for any loss, cost, damages, or expenses whatsoever incurred or sustained by the Customer resulting from any interpretation made by any of our employees.

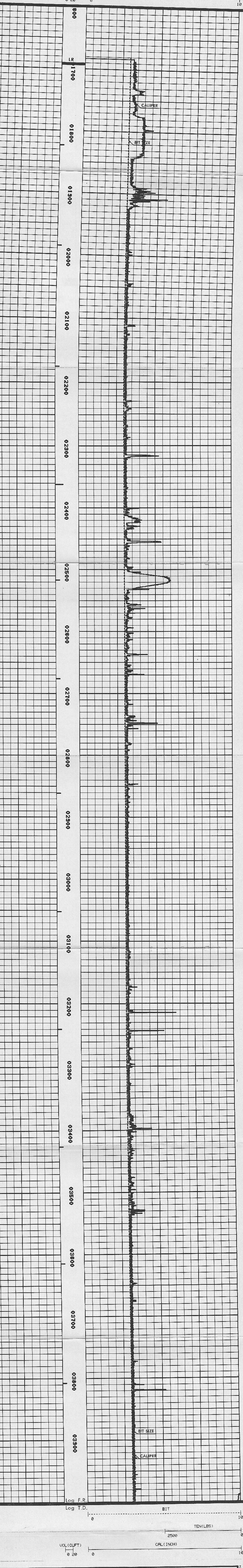
Remarks: BIT SIZE ABOVE 1844' IS 3.78"
BIT SIZE BELOW 1844' IS 2.98"

MAX. RECORDING OF THERMOMETERS: 128°F.
128°F.

RUN	TRIP	TOOL	SERIAL NO.	SERIES NO.	POSITION
1	1	CAL	5449	2110	CENT

COMPANY: GEO OPERATOR
WELL NAME: N-3
SERVICE: KC442A
REVISION: FYSVAL REV D007 VER 7

FILE: 5
DATE: 7/28/86
TIME: 23:55:13
MODE: PLAYBACK



Log F.R.
Log T.D.

2500
TEN (LBS)
CAL (INCH)
VOL (CUFT)



0 10