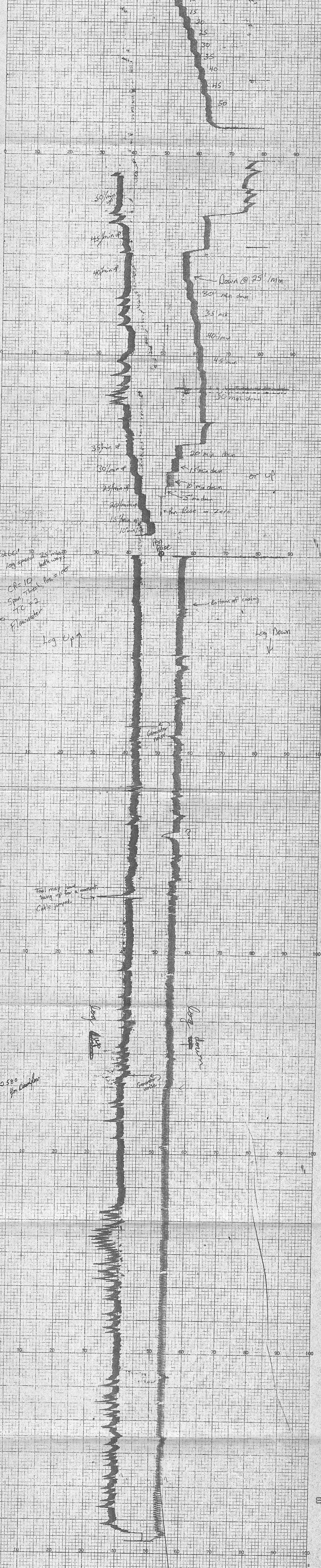


USGS Log - Flowmeter
MCG-1 Redburg, Idaho



2260' 10' 25' min 20
log speed both ways
CF = 10
Span Thresh. Pos = 100
2300
Flowmeter

Tool may have hung up for a moment
Cable jumped

2580 for Damper

USGS Log - Flowmeter
MCG-1 Redburg, Idaho

CHART NO. WH-7
TEXAS INSTRUMENTS INCORPORATED, HOUSTON, TEXAS, U.S.A.
679
HURVILLA

CHART NO. WH-7
TEXAS INSTRUMENTS INCORPORATED, HOUSTON, TEXAS, U.S.A.
679
HURVILLA

CHART NO. WH-7
TEXAS INSTRUMENTS INCORPORATED, HOUSTON, TEXAS, U.S.A.
679
HURVILLA

CHART NO. WH-7
TEXAS INSTRUMENTS INCORPORATED, HOUSTON, TEXAS, U.S.A.
679
HURVILLA

CHART NO. WH-7
TEXAS INSTRUMENTS INCORPORATED, HOUSTON, TEXAS, U.S.A.
679
HURVILLA