

T.21N-R.2E.

T.21N-R.3E.

T.21N-R.4E.

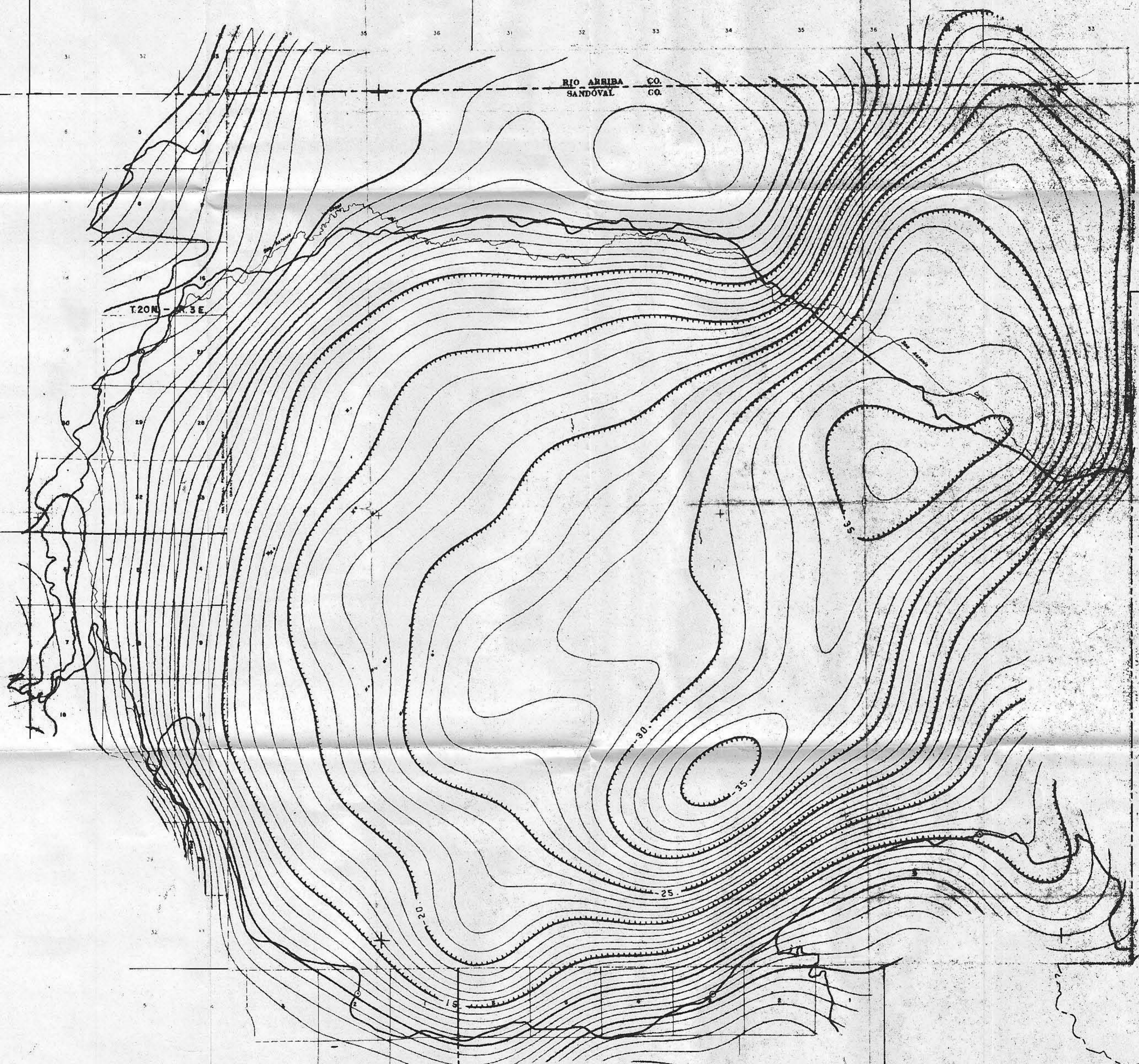
T.21N-R.5E.

T.20N-R.2E.

T.20N-R.3E.

RIO ARRIBA CO.
SANDOVAL CO.

SANTA CLARA
INDIAN
RESERVATION



T.18N-R.3E.

T.18N-R.4E.

UNITED STATES GEOLOGICAL SURVEY
 GEOLOGICAL DIVISION
 LOS ANGELES, CALIFORNIA
BACA PROSPECT
 FILTERED 1st
 ORDER RESIDUAL
 15,000-10,000 FEET
 SANDOVAL & RIO ARRIBA
 COUNTIES, NEW MEXICO
 SCALE: 1" = 4000' DECEMBER, 1911

ENCLOSURE V
 866-1211