

**DIRECTIONAL LOG**

Schlumberger

|   |                                 |
|---|---------------------------------|
| COMPANY <b>CHEVRON OIL COMPANY</b>              |                                 |
| WELL <b>CHEVRON-ATR-GINN NO. 1-13</b>           |                                 |
| FIELD <b>WHIRLWIND VALLEY AREA</b>              |                                 |
| COUNTY <b>LANDER</b>                            | STATE <b>NEVADA</b>             |
| LOCATION <b>CENTER OF THE SE-1/4, SE-1/4 OF</b> |                                 |
| Sec. <b>13</b>                                  | Twp. <b>31N</b> Rgn. <b>47E</b> |
| Other Services:                                 |                                 |
| Blowpoint Datum <b>GL</b>                       | Elev. <b>4966.8</b>             |
| Log Measured From <b>KB</b>                     | 13.57' Above Perm. Datum        |
| Drilling Measured From <b>KB</b>                | D.P. <b>4966.8</b>              |
| Date <b>5-22-76</b>                             |                                 |
| Run No. <b>082</b>                              |                                 |
| Depth-Driller <b>6500</b>                       |                                 |
| Depth-Logger <b>6493</b>                        |                                 |
| Min. Log Interval <b>6492</b>                   |                                 |
| Top Log Interval <b>640</b>                     |                                 |
| Depth Interval Between Stab. <b>100'</b>        |                                 |
| Casing - Driller <b>13-3/8" 8012</b>            |                                 |
| Casing - Logger                                 |                                 |
| Bit Size <b>12-1/4"</b>                         |                                 |
| Type Fluid in Hole <b>F. G. W.</b>              |                                 |
| Type <b>FULL</b>                                |                                 |
| Temp. - Vic. <b>66</b>                          | <b>60</b>                       |
| SP. Fluid Loss <b>0.5</b>                       | ml                              |
| Source of Sample <b>PIT</b>                     |                                 |
| Est. @ Press. Temp. <b>1.85 @ 82 F</b>          |                                 |
| Est. @ Surf <b>1.85 @ 76.2 F</b>                |                                 |
| Press. Shut. Off <b>3</b>                       | HRS                             |
| Max. Inc. Temp. <b>2</b>                        | F                               |
| Depth Location <b>7883 VERMILION</b>            |                                 |
| Recorded by <b>MMUGARD-ENTLARY</b>              |                                 |
| Witnessed by <b>LAKE-DODDIER</b>                |                                 |

Reproduced By  
**Electrical Log Services**  
Midland, Texas 79701

REFERENCE K 26375

**COMPLETION RECORD**

MADE FROM BEST COPY AVAILABLE



SPUD DATE \_\_\_\_\_

COMP DATE \_\_\_\_\_

DST RECORD \_\_\_\_\_

API NO. \_\_\_\_\_

CASING RECORD \_\_\_\_\_

PERFORATING RECORD \_\_\_\_\_

ACID FRAC SHOT \_\_\_\_\_

IP \_\_\_\_\_

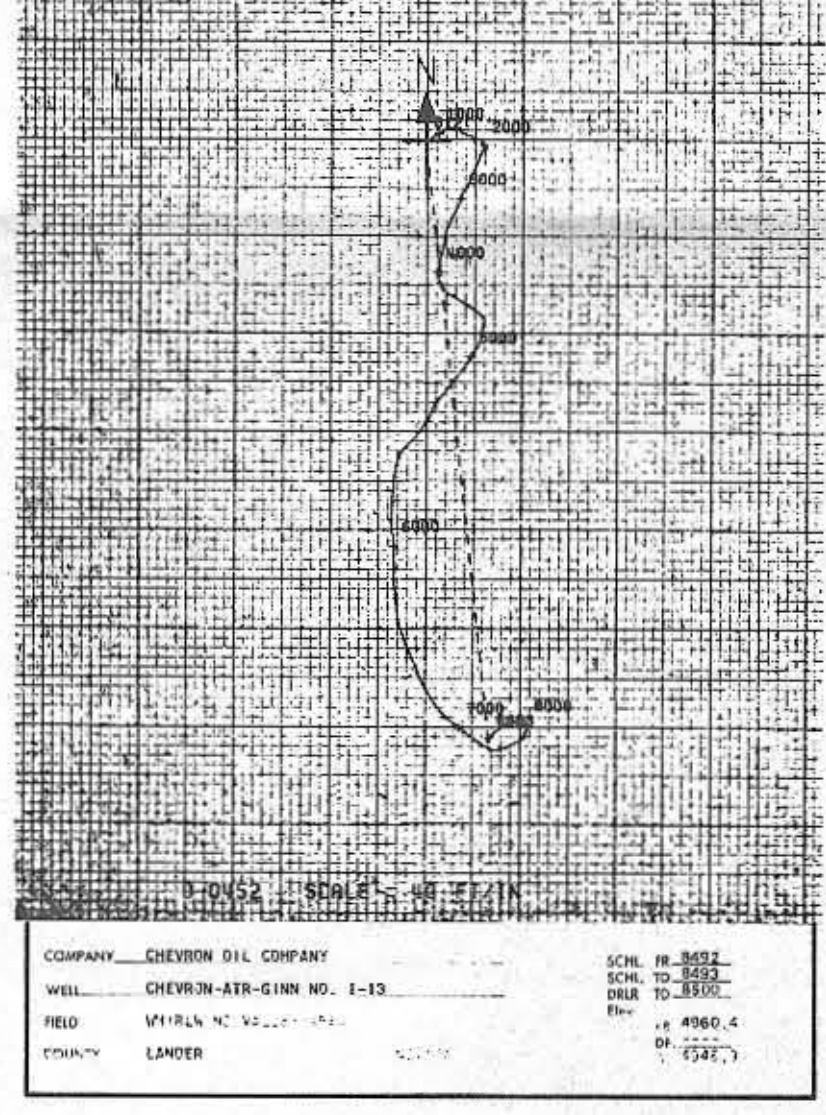
GOR GR \_\_\_\_\_

TP CP \_\_\_\_\_

REMARKS: \_\_\_\_\_

REPRODUCTION FOR RESALE PROHIBITED

ANY DIRECTIONAL COMPUTATIONS MADE FROM THE DIPICTER LOG MUST BE REGARDED AS APPROXIMATED ONLY. THIS IS BECAUSE THE DIPICTER LOG INDICATES THE DIRECTION OF THE INSTRUMENT ITSELF, RATHER THAN THE DIRECTION AND ANGLE OF THE WELL ITSELF. THEREFORE, WE DO NOT AND CANNOT GUARANTEE THE ACCURACY OF SUCH DIRECTIONAL COMPUTATIONS, AND WE SHALL NOT BE LIABLE OR RESPONSIBLE FOR ANY LOSS OF OIL, DAMAGES, OR EXPENSES INCURRED OR SUSTAINED THAT MAY RESULT FROM ANY SUCH COMPUTATIONS.



COMPANY **CHEVRON OIL COMPANY**

WELL **CHEVRON-ATR-GINN NO. 1-13**

FIELD **WHIRLWIND VALLEY AREA**

COUNTY **LANDER**

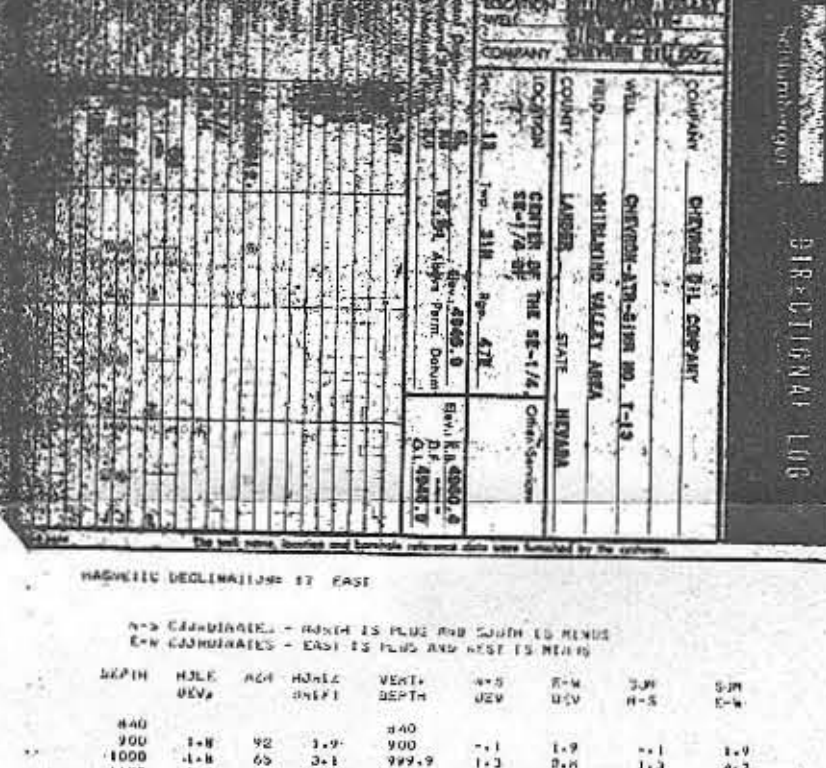
SCHL. FR. **8492**

SCHL. TO **8493**

DRIL. TO **8500**

Elev. **4966.4**

D.P. **4966.8**



MAGNETIC DECLINATION: 17 EAST

N-S COORDINATES - NORTH IS PLUS AND SOUTH IS MINUS  
E-W COORDINATES - EAST IS PLUS AND WEST IS MINUS

| DEPTH | HELF. DEVS. | AGE | HELF. DEVS. | VENT. DEPTH | N-S   | E-W  | SUR   | SUR   |
|-------|-------------|-----|-------------|-------------|-------|------|-------|-------|
|       |             |     |             |             | UVZ   | UVZ  | N-S   | E-W   |
| 440   |             |     |             | 840         |       |      |       |       |
| 900   | 1-8         | 92  | 1-9         | 900         | -1.1  | 1-9  | -1.1  | 1-9   |
| 1100  | 1-8         | 65  | 3-1         | 997.9       | -1.3  | 2-8  | -1.3  | 4-2   |
| 1100  | 1-6         | 67  | 2-8         | 1099.9      | -1.1  | 2-6  | -1.1  | 7-3   |
| 1300  | 1-2         | 67  | 2-1         | 1199.9      | -2    | 2-1  | -2    | 9-0   |
| 1400  | -6          | 127 | 1-6         | 1299.9      | -1.8  | 1-1  | -1.8  | 10-5  |
| 1500  | -6          | 130 | 1-4         | 1399.8      | -1.9  | 1-1  | -1.9  | 11-5  |
| 1600  | 1-9         | 122 | 1-7         | 1499.8      | -1.1  | 1-4  | -1.1  | 12-1  |
| 1700  | 1           | 127 | 1-7         | 1597.8      | -1.1  | 1-5  | -1.1  | 14-2  |
| 1800  | -9          | 112 | 1-6         | 1799.8      | -1.6  | 1-5  | -1.6  | 15-6  |
| 1900  | 1-1         | 137 | 1-7         | 1899.8      | -1.3  | 1-2  | -1.3  | 17-1  |
| 2000  | 1-1         | 139 | 1-4         | 1999.8      | -1.4  | 1-3  | -1.4  | 18-5  |
| 2100  | -9          | 187 | 1-6         | 2099.7      | -1.6  | -1.7 | -1.6  | 19-3  |
| 2200  | -7          | 164 | 1-2         | 2199.7      | -1.6  | -1.7 | -1.6  | 20-2  |
| 2300  | 1           | 198 | 1-4         | 2299.7      | -1.4  | -1.7 | -1.4  | 17-9  |
| 2400  | 1-1         | 201 | 1-2         | 2499.7      | -1.7  | -1.5 | -1.7  | 17-4  |
| 2500  | 2           | 210 | 1-3         | 2599.6      | -2    | -1.7 | -2    | 16-7  |
| 2600  | 2-8         | 204 | 4-9         | 2699.5      | -1.5  | -2   | -1.5  | 15    |
| 2700  | 2-7         | 219 | 4-7         | 2799.4      | -3.3  | -2   | -3.3  | 12    |
| 2800  | 2-1         | 208 | 3-7         | 2899.3      | -3.2  | -1.7 | -3.2  | 8-3   |
| 3000  | 2-1         | 207 | 3-7         | 2999.2      | -3.3  | -1.7 | -3.3  | 4-6   |
| 3100  | 2-1         | 207 | 3-7         | 3099.1      | -3.2  | -1.7 | -3.2  | 3     |
| 3200  | 2-1         | 208 | 3-7         | 3199.1      | -3.2  | -1.6 | -3.2  | 5-2   |
| 3300  | 2           | 210 | 3-3         | 3299.1      | -3    | -1.6 | -3    | 1-3   |
| 3400  | 1-7         | 212 | 3           | 3399        | -2.5  | -1.6 | -2.5  | -1.2  |
| 3500  | 1-7         | 182 | 3           | 3499        | -2.3  | -1.6 | -2.3  | -1.1  |
| 3600  | 1-6         | 197 | 2-8         | 3598.9      | -2.7  | -1.6 | -2.7  | -1.1  |
| 3700  | 1-6         | 197 | 2-6         | 3698.9      | -2.7  | -1.6 | -2.7  | -1.1  |
| 3800  | 1-9         | 202 | 3           | 3798.9      | -2.8  | -1.1 | -2.8  | -2    |
| 3900  | 1-9         | 167 | 3-3         | 3898.8      | -3.3  | -1.4 | -3.3  | -2.5  |
| 4000  | 2           | 192 | 3-3         | 3998.7      | -3.4  | -1.7 | -3.4  | -1.2  |
| 4100  | 2-1         | 186 | 3-7         | 4098.7      | -3.6  | -1.5 | -3.6  | -4.7  |
| 4200  | 2-2         | 147 | 3-8         | 4198.6      | -3.7  | 2-1  | -3.7  | -2.6  |
| 4300  | 2-8         | 137 | 4-9         | 4298.5      | -2.9  | 3-9  | -2.9  | 1-3   |
| 4400  | 3-1         | 137 | 5-4         | 4398.4      | -1.1  | 3-7  | -1.1  | 5     |
| 4500  | 4           | 127 | 3-2         | 4498.2      | -1.1  | 3-2  | -1.1  | 9-1   |
| 4600  | 2-2         | 147 | 3-6         | 4598.1      | -3-2  | 2-1  | -3-2  | 11-2  |
| 4700  | 1-7         | 187 | 3           | 4698.1      | -2.9  | -1.4 | -2.9  | 10-9  |
| 4800  | 2-3         | 192 | 4           | 4798        | -2.9  | -1.8 | -2.9  | 10    |
| 4900  | 3-2         | 197 | 5-6         | 4897.6      | -1.3  | -1.5 | -1.3  | 8-4   |
| 5000  | 3-8         | 205 | 6-6         | 4997.6      | -6    | -2-8 | -6    | 7-6   |
| 5100  | 4-4         | 217 | 7-7         | 5097.3      | -6.1  | -2-6 | -6.1  | -1    |
| 5200  | 6-8         | 222 | 11-8        | 5197.6      | -8-4  | -1-9 | -8-4  | -8-9  |
| 5300  | 6           | 205 | 10-5        | 5296.1      | -7.5  | -2-4 | -7.5  | -11-3 |
| 5400  | 6           | 209 | 6-7         | 5395.7      | -7.6  | -2-9 | -7.6  | -11-3 |
| 5500  | 4           | 222 | 7           | 5495.5      | -5-2  | -2-7 | -5-2  | -11-2 |
| 5600  | 4-7         | 207 | 6-2         | 5595.1      | -7-3  | -3-1 | -7-3  | -10-5 |
| 5700  | 4-4         | 177 | 7-2         | 5694.8      | -7.7  | -4   | -7.7  | -12-6 |
| 5800  | 4-2         | 193 | 7-8         | 5794.1      | -8.9  | -1-9 | -8.9  | -12-9 |
| 5900  | 4           | 192 | 7-3         | 5894.1      | -10-4 | -1   | -10-4 | -12-4 |
| 6000  | 4           | 177 | 10-3        | 5993.6      | -10-1 | -1   | -10-1 | -12-1 |
| 6100  | 3-1         | 187 | 8-9         | 6092.6      | -8-6  | -1-1 | -8-6  | -12-2 |
| 6200  | 3-9         | 177 | 7-5         | 6092.4      | -7.5  | -1   | -7.5  | -12-2 |
| 6300  | 4-3         | 157 | 7-5         | 6092.1      | -6-9  | -1   | -6-9  | -12-8 |
| 6400  | 4-3         | 167 | 7-5         | 6091.8      | -7-3  | -1   | -7-3  | -12-2 |
| 6500  | 4-3         | 162 | 7-5         | 6091.5      | -1-1  | 2-3  | -1-1  | -12-2 |
| 6600  | 4-3         | 147 | 7-2         | 6091.2      | -6-3  | 4-1  | -6-3  | -12-5 |
| 6700  | 4-3         | 152 | 7-5         | 6091        | -6-6  | 3-9  | -6-6  | -13-3 |
| 6800  | 4-3         | 137 | 7-5         | 6090.7      | -5-1  | 5-1  | -5-1  | -13-1 |
| 6900  | 4           | 137 | 7           | 6090.4      | -3-1  | 4-8  | -3-1  | -13-4 |
| 7000  | 3-1         | 107 | 5-6         | 7090.3      | -3-5  | 4-6  | -3-5  | -1-2  |
| 7100  | 2-9         | 135 | 5-1         | 7190.1      | -3-6  | 3-6  | -3-6  | 4-8   |
| 7200  | 2-6         | 127 | 4-5         | 7290        | -2.7  | 3-6  | -2.7  | 11-9  |
| 7300  | 2           | 87  | 3-5         | 7390        | -5    | 3-5  | -5    | 8-4   |
| 7400  | 1-8         | 67  | 3-1         | 7489.9      | -1-2  | 2-9  | -1-2  | 11-9  |
| 7500  | 2           | 62  | 3-2         | 7589.9      | -1-6  | 2-1  | -1-6  | 14-8  |
| 7600  | 1-6         | 62  | 2-8         | 7689.8      | -1-4  | 2-1  | -1-4  | 12-9  |
| 7700  | 1-7         | 62  | 3           | 7789.6      | -2-2  | -2   | -2-2  | 22-5  |
| 7800  | 1-9         | 17  | 3-2         | 7889.7      | -3-2  | 1    | -3-2  | 21-6  |
| 7900  | 1-4         | 337 | 3-4         | 7989.7      | -2-2  | -1   | -2-2  | 22-6  |
| 8000  | 2-1         | 267 | 3-7         | 8089.6      | -2    | -1   | -2    | 19    |
| 8100  | 2-5         | 242 | 4-4         | 8189.5      | -2-1  | -3-9 | -2-1  | 15-1  |
| 8200  | 1-2         | 233 | 3-6         | 8289.4      | -2-5  | -2   | -2-5  | 11-9  |
| 8300  | 1-5         | 187 | 2-6         | 8389.4      | -2-5  | -2   | -2-5  | 11-1  |
| 8400  | 1-5         | 187 | 2-6         | 8489.4      | -2-4  | -2   | -2-4  | 10-8  |

ORIGIN 8400

3000'

4000'

5000'

6000'

7000'

8000'

8492

SCALE 1" = 50'

COMPANY **CHEVRON OIL COMPANY**

WELL **CHEVRON-ATR-GINN NO. 1-13**

FIELD **WHIRLWIND VALLEY AREA**

COUNTY **LANDER** STATE **NEVADA**

ELEV. **KB 4960.4**

**DL 4966.8**

**GL 4966.8**