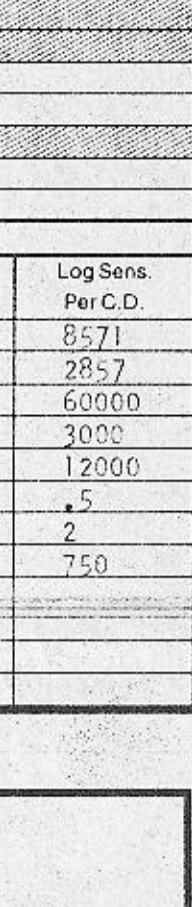


# Dual Detector Neutron Lifetime Log

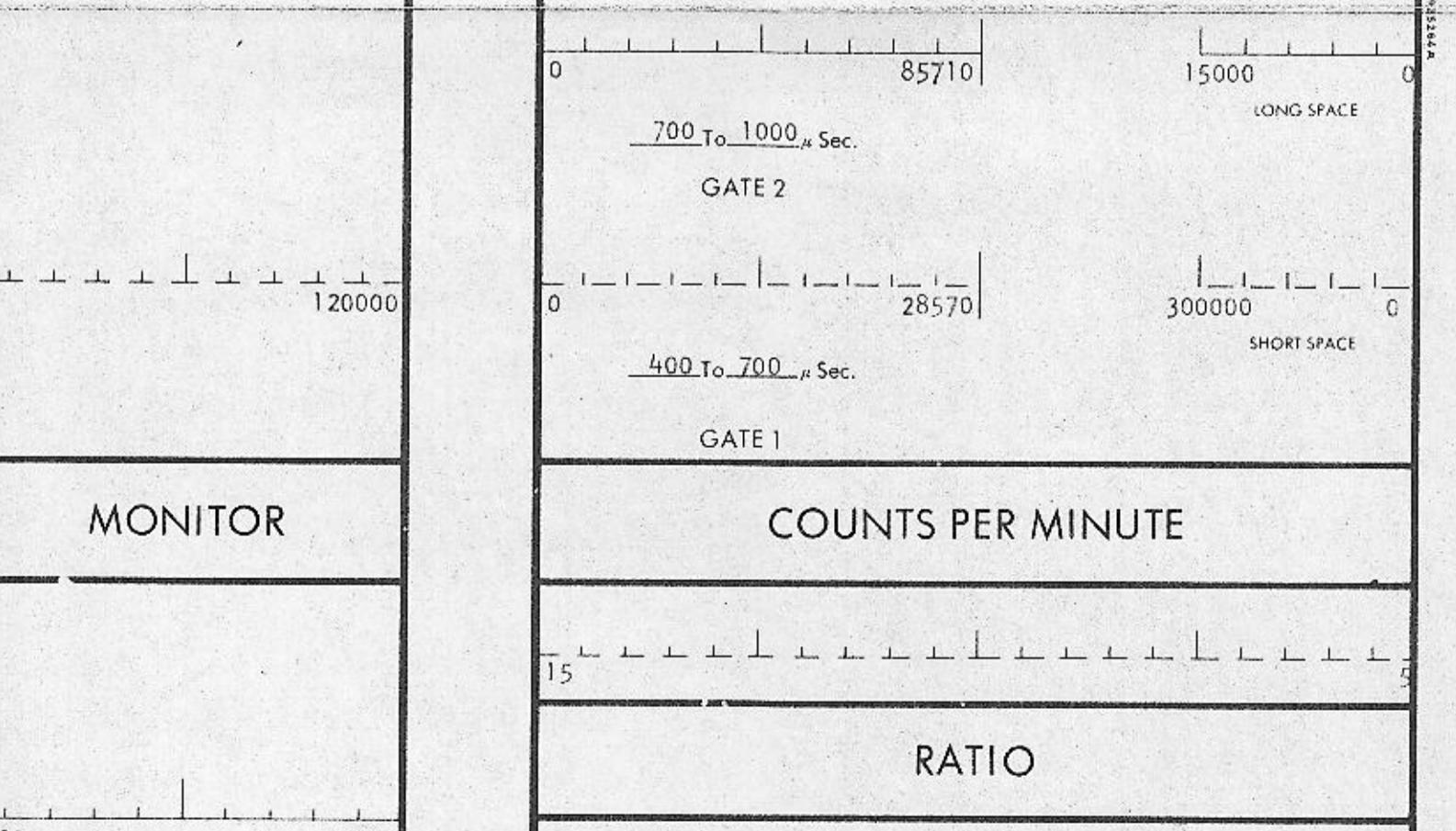
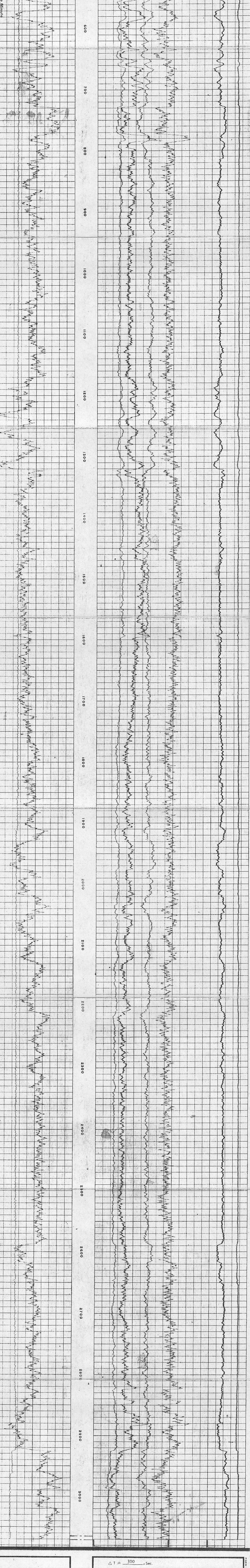
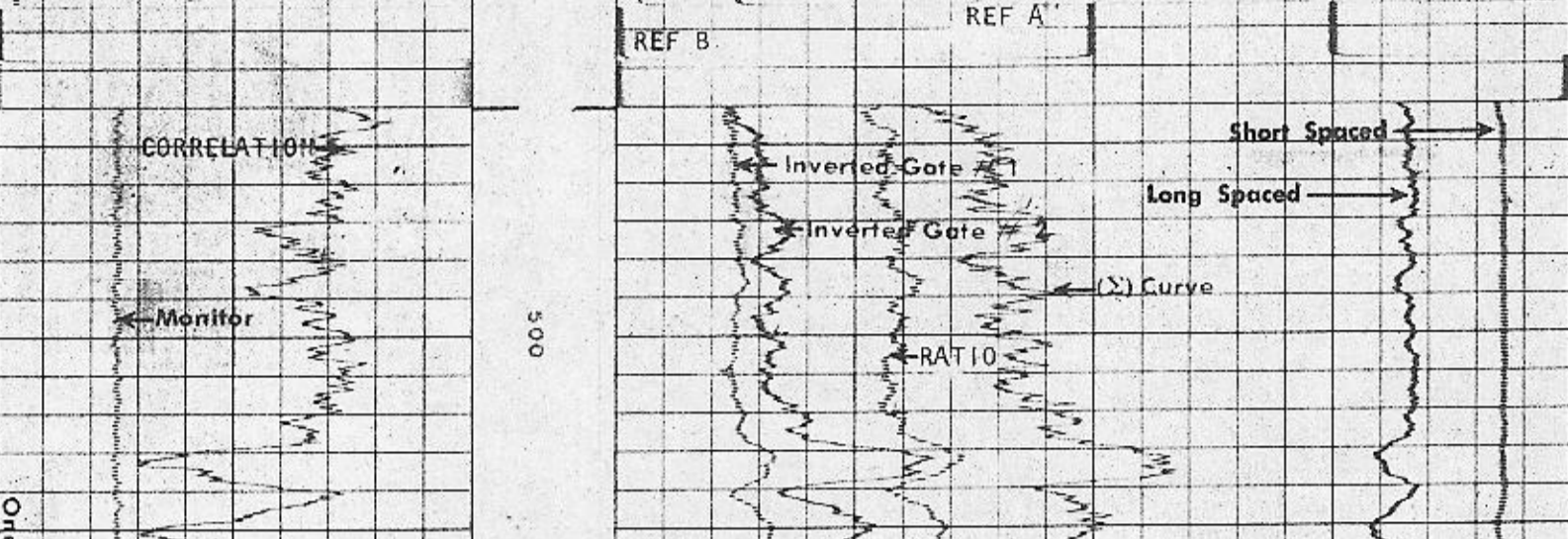
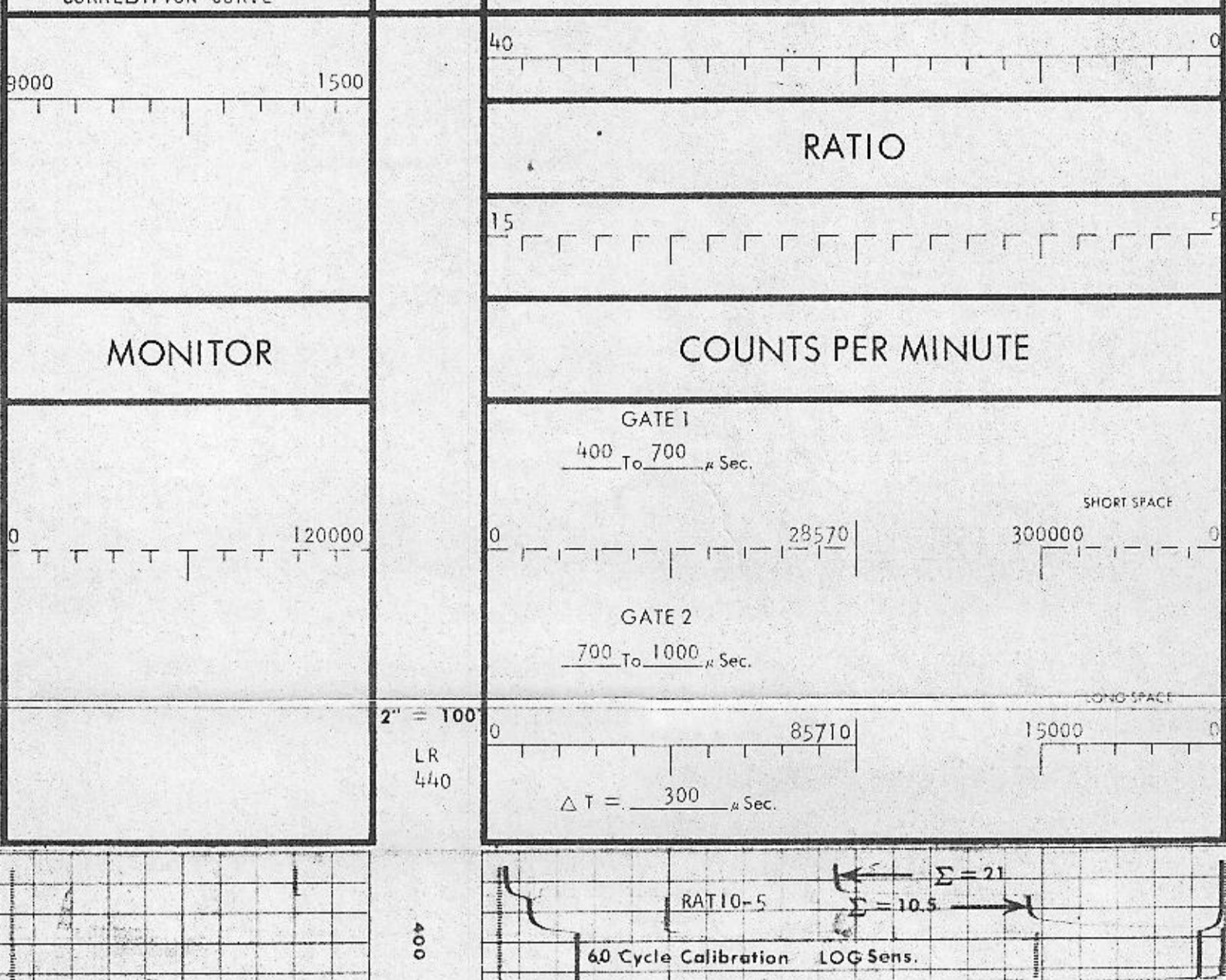


WELL: DESERT PEAK WELL 8-23-1  
 COUNTY: CHURCHILL STATE: NEVADA  
 LOCATION: N/A  
 DATE: 23 NOV 22 N. LOG: 27 E. SPEC: FMA  
 FORMATION: 01  
 LOGGING METHOD: 01  
 LOGGING SPEED: 35  
 LOGGING INTERVAL: 3065  
 LOGGING START: 444  
 LOGGING STOP: 3070  
 LOGGING TOTAL: 2626  
 LOGGING AVERAGE: 17.17  
 LOGGING STANDARD DEVIATION: 1.71  
 LOGGING COEFFICIENT OF VARIATION: 9.93  
 LOGGING CORRECTION: FULL  
 LOGGING TIME: 218  
 LOGGING LOCATION: BLITZ  
 LOGGING OPERATOR: K.B. BEBOUT  
 LOGGING ASSISTANT: N/A  
 LOGGING SUPERVISOR: N/A  
 LOGGING CHECKER: N/A  
 LOGGING APPROVER: N/A

REMARKS: REPEAT SECTION RUN @ TOP OF HOLE DUE TO HOLE TEMPERATURE.

Series No.	RUN NO. 1		RUN NO. 2		RUN NO. 3	
	DNLL	GR	DNLL	GR	DNLL	GR
2710						
31769						

Run No.	Curve	From	To	Speed Ft./Min.	T.C. Sec.	Sens. Setting	Detector Gate (Micro-Sec.)	Zero Div. Lcrft	Log Sens. Per C.D.
ONE	GATE 2	444	3070	20	3	35	200	0	8571
ONE	GATE 1	444	3070	20	3	210	300	0	2857
ONE	SS	444	3070	20	3	10	200	0	60000
ONE	LS	444	3070	20	3	100	300	0	3000
ONE	MONITOR	444	3070	20	1	025		0	12000
ONE	RATIO	444	3070	20	3	149		0	2
ONE	SIGMA	444	3070	20	3	188		5L	2
ONE	CORR.	444	3070	20	3	400		2R	750



Company	PHILLIPS PETROLEUM COMPANY	Drillers	T.D. 3068
Well	DESERT PEAK WELL 8-23-1	Log F.R.	3065
Field	DESERT PEAK	Log T.D.	3071
County	CHURCHILL	Elevations	N/A
State	NEVADA	K.B.	D.F. G.L.

