



WELL NO. 9" = 100'
 COMPANY PHILLIPS PETROLEUM COMPANY
 FIELD DESERT PEAK WELL 8-23-1
 COUNTY CHURCHILL STATE NEVADA
 LOCATION N/A
 SEC. 23 TWP. 22 N. RGE. 27 E. D.M. 14
 S.E. 1/4
 DISTRICT 200
 SPECTRAL LOG

Operator: G.L. WALTER
 Date: 11-27-79
 Time Log: 20:55
 Depth-Counter: 3070
 Total Log Length: 1770
 Type of Fluid: Oil
 Cement: 0
 Level: FILL
 Max. Hole Temp. Deg. F: 151
 Measured By: R.K. BRIGHT

Run No. 01E
 Tool Model No. 2703
 Object Model No. 0767
 Type SCINT.
 Length 121"

Dist. To N. Source

General
 Hourly Truck No. HL6665
 Tool Serial No. 44952

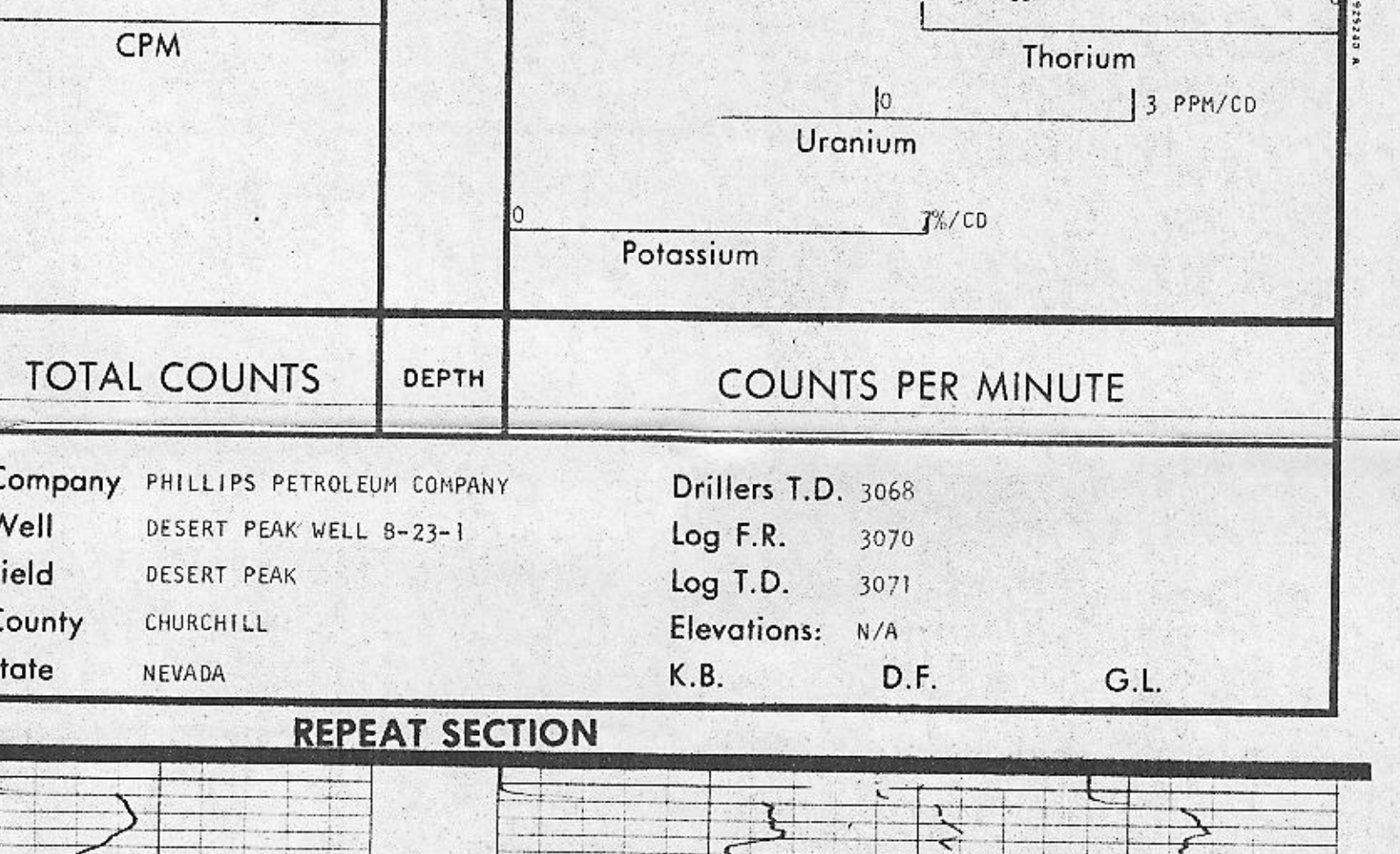
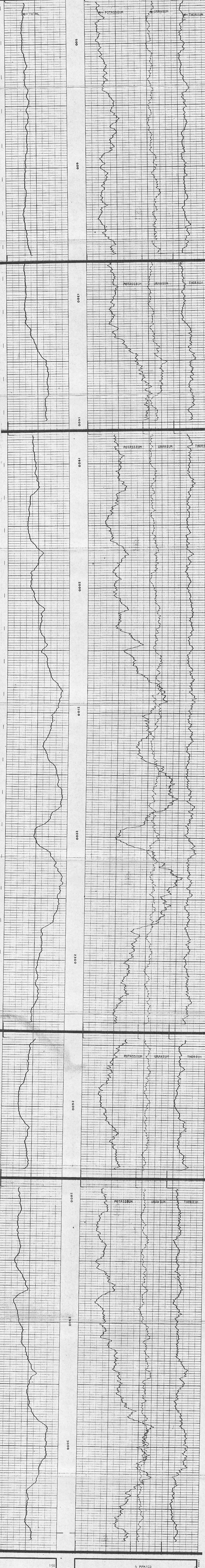
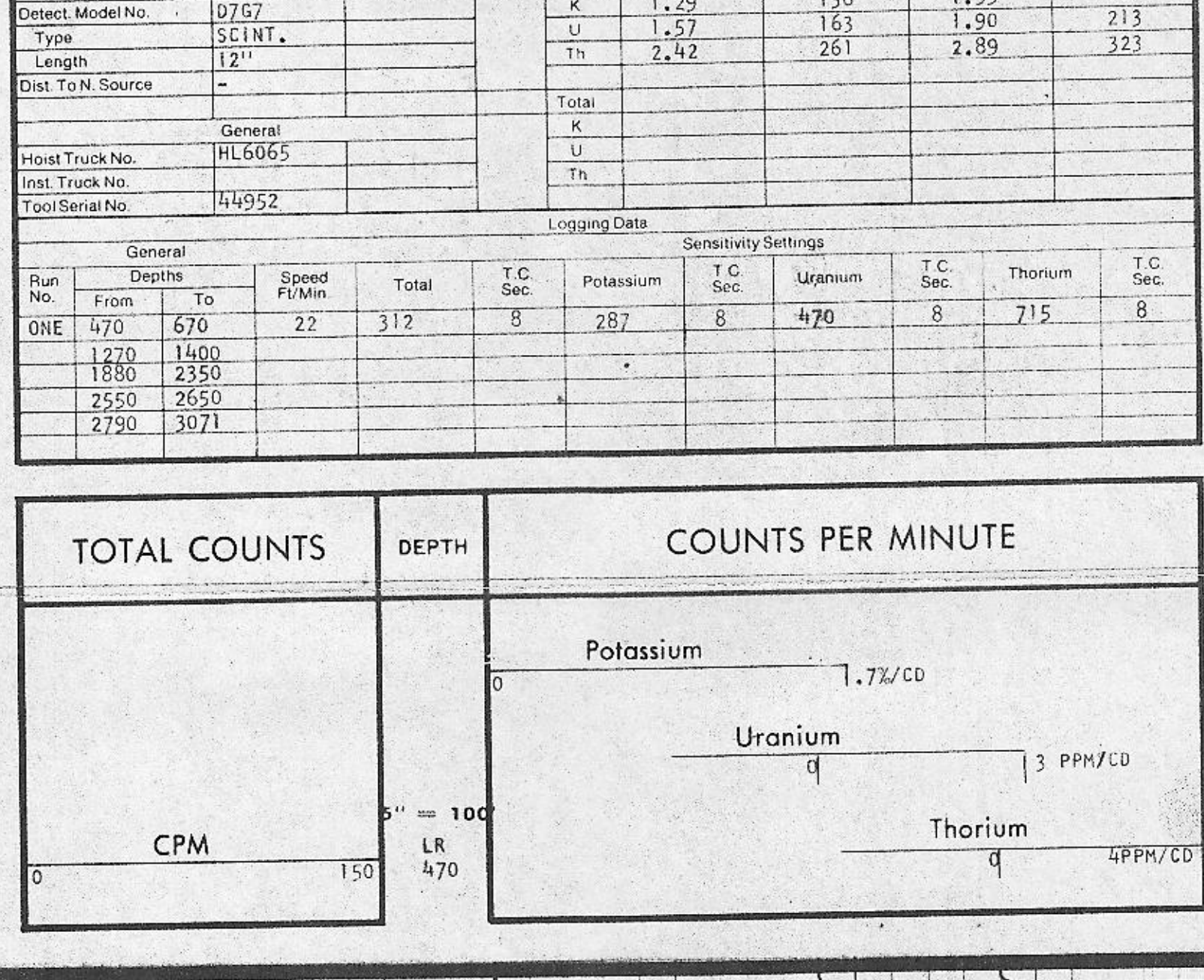
Equipment Used
 Series No. 2703
 Run No. 01E
 S.O. 13836
 Tool No. 44952
 Elec. No. 46912
 Panel No. 46658

Channel Ranges
 Lower Limit Upper Limit Ch. No.
 MEV 0.4 3.57 377
 K 1.29 1.36 161
 U 1.57 1.65 213
 Th 2.42 2.89 323

Total
 K U Th

Logging Data
 Run No. From To Speed P/Min Total T.C. Sec Potassium T.C. Sec Uranium T.C. Sec Thorium T.C. Sec

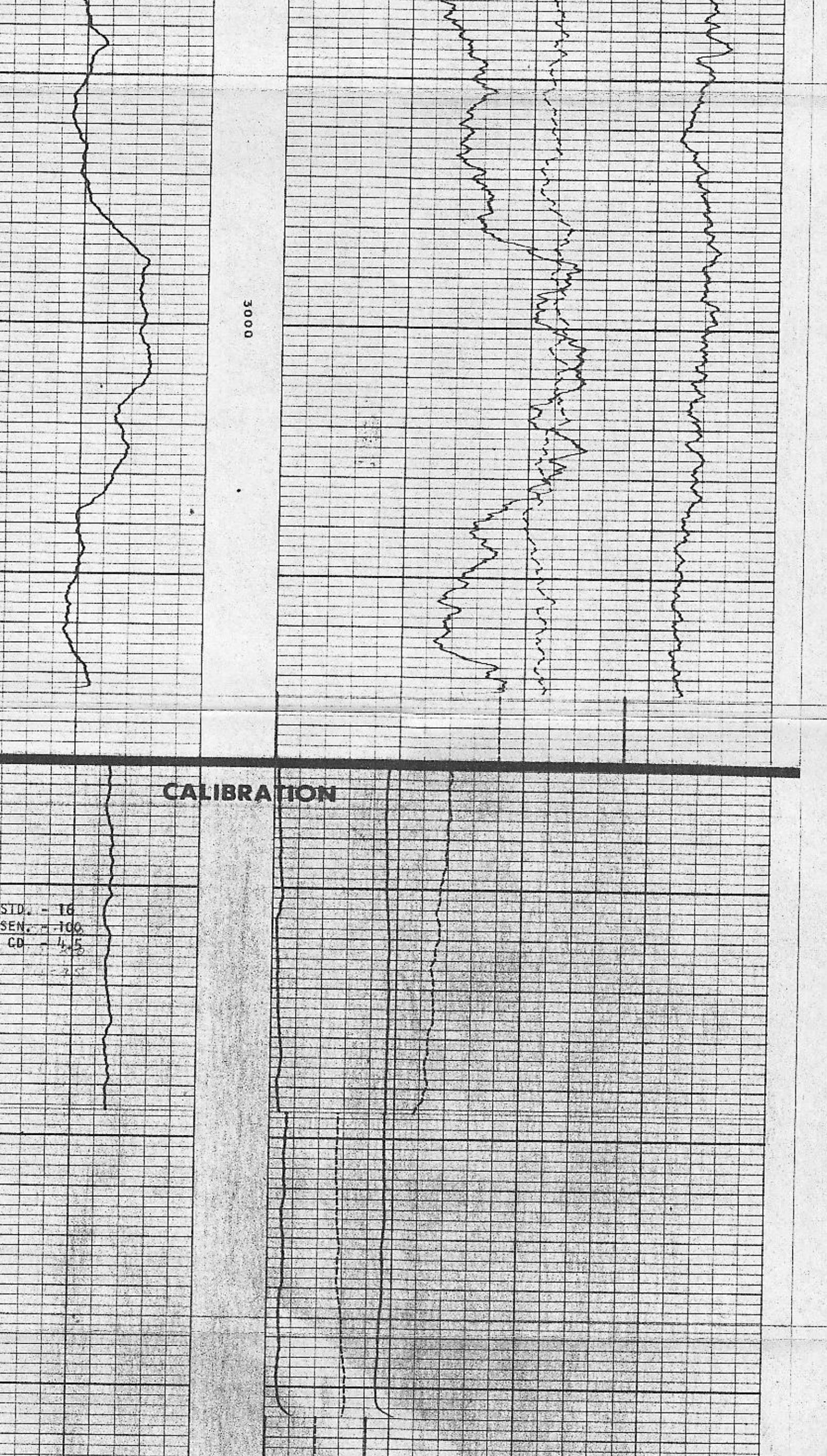
01E	470	670	22	312	8	287	8	470	8	715	8
	1230	1400									
	1380	2350									
	2550	2650									
	2790	3071									



Company PHILLIPS PETROLEUM COMPANY
 Well DESERT PEAK WELL 8-23-1
 Field DESERT PEAK
 County CHURCHILL
 State NEVADA

Drillers T.D. 3068
 Log F.R. 3070
 Log T.D. 3071
 Elevations: N/A
 K.B. D.F. G.L.

REPEAT SECTION



CALIBRATION

