

COMPANY: THERMAL POWER
 WELL: DIXIE FEDERAL 45-14
 FIELD: DIXIE VALLEY
 COUNTY: CHURCHILL STATE: NEVADA

Permanent Datum: KB 71 Ft Above Farm Datum
 Log Measured From: KB 71 Ft Above Farm Datum
 Date: 4/1/79

Log Number: 1325
 Log Date: 4/1/79

Log Measured From: KB 71 Ft Above Farm Datum
 Log Measured From: KB 71 Ft Above Farm Datum

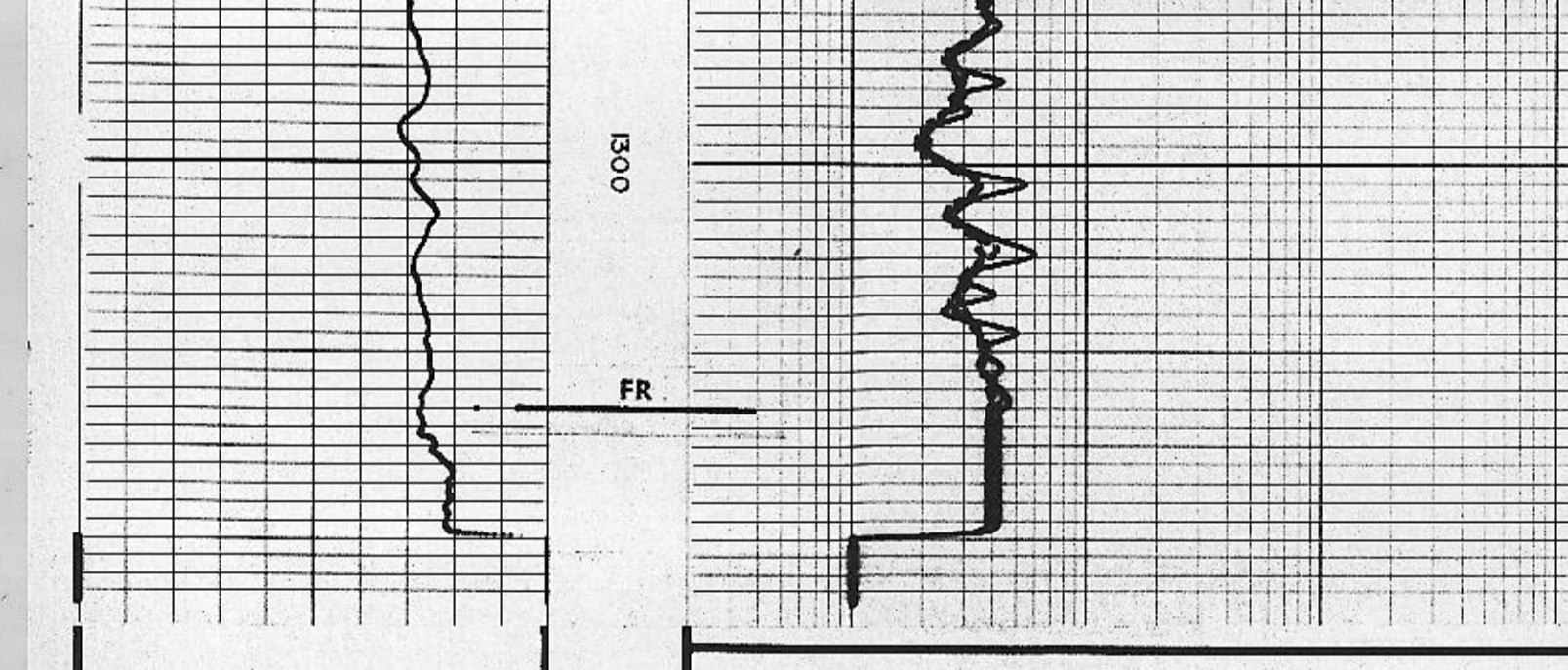
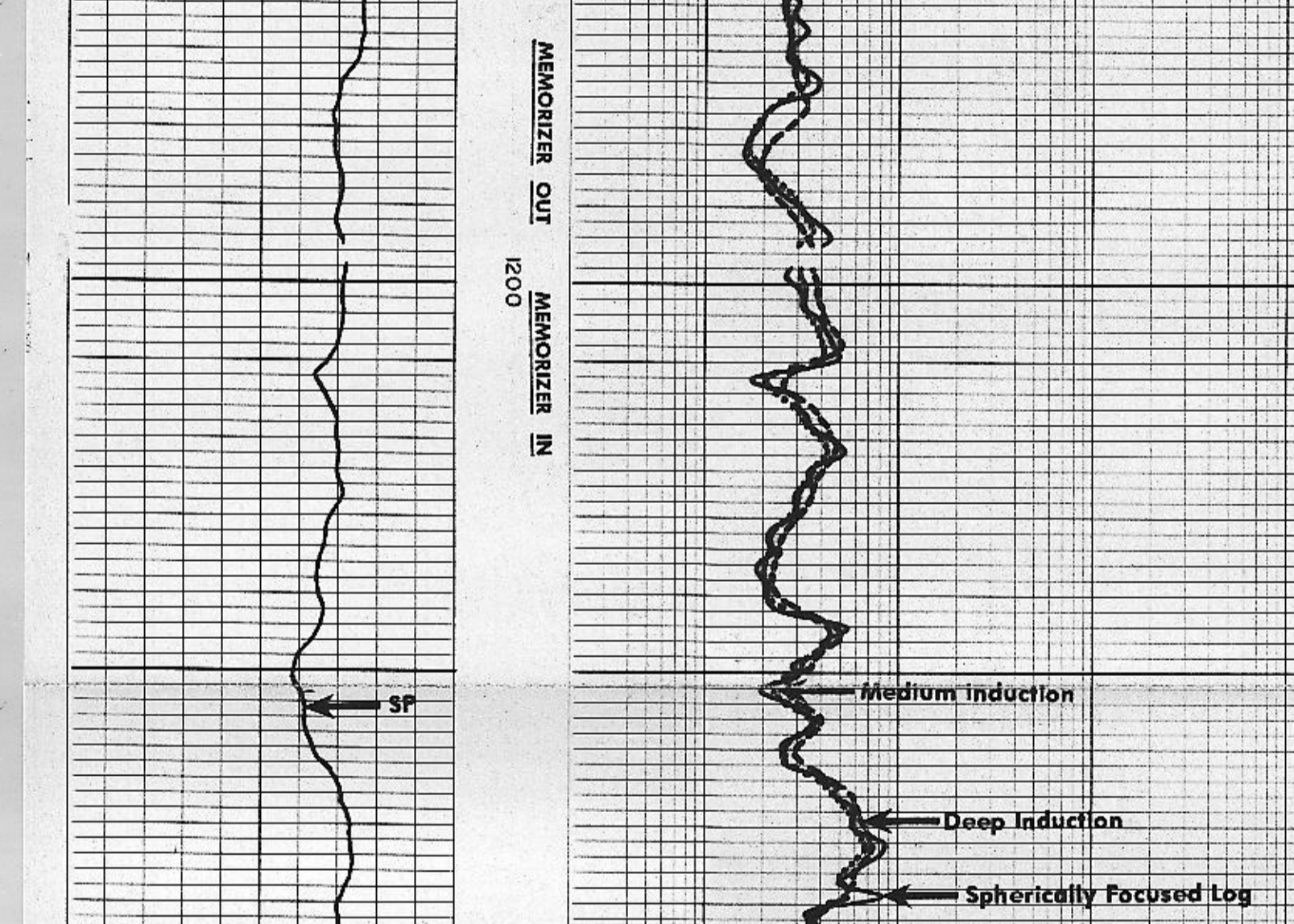
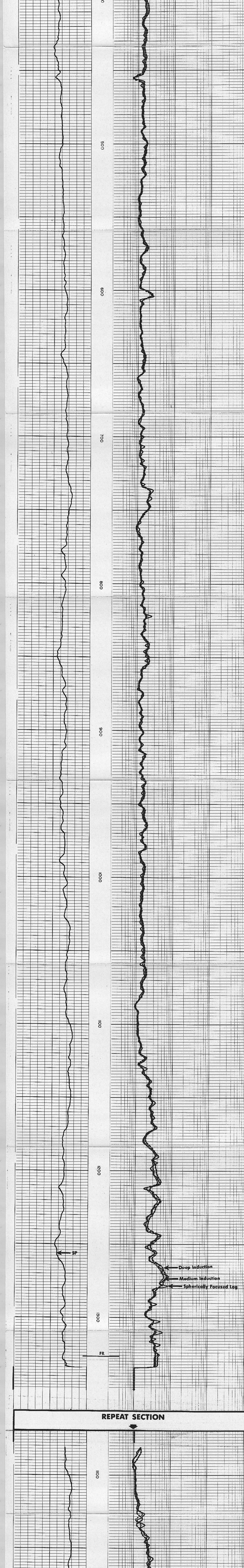
Run No.	Service Order No.	Scale Up Hole	Scale Down Hole
019	25758		
Full Level	FULL		
Speed F.P.M.	100		
Salinity ppm/d			

EQUIPMENT DATA	
Cartridge	DD-519
Sonde	DA-100
Memorizer Panel	DA-53
Centralizer Type	CA-53
Stand-off - Inches	
G.R. Panel	

CALIBRATION DATA	
SBR	1
ILD Sonde Error	5.36
IRM Sonde Error	15.91
S.E. Set In Hole - Depth	
S.E. Corr. - Hole Size	
G.S. Background	
G.R. Source	
T.C. Cal.	

LOGGING DATA	
SBR	1
ILD Sonde Error Log	5.36
IRM Sonde Error Log	15.91
G.S. Scale per 100 Div.	
G.R. T.C. Log	

All interpretations are opinions based on information from electrical or other measurements and are correct and do not guarantee the accuracy or correctness of any interpretation, and we shall not be liable for any loss, cost, damages or expenses incurred or sustained by anyone resulting from any interpretation or use of these logs. These interpretations are also subject to Clause 4 of our General Terms and Conditions of sale and to our current Price Schedule.



DUAL INDUCTION CALIBRATION FILM CODING	
1. MECHANICAL ZERO	APRIL 7, 1979
2. 1 OHM-M	DIC-DA 200
3. 100 OHM-M	DIC-24 25
4. ELECTRICAL ZERO (500 OHM-M)	SONDE ERRORS
5. 2 OHM-M	IRM 5.36
6. SONDE ERRORS (42 MMHO)	FILM 15.91
7. ZERO SIGNAL IN AIR	
8. Ild TEST LOOP (2 OHM SIGNAL)	
9. IRM TEST LOOP (2 OHM SIGNAL)	
10. Rsv/Rt UNITY	
11. Rsv/Rt CALIBRATE	

CALIBRATION RECORD			
COMPANY	THERMAL POWER	SCHL. FR	1325
WELL	DIXIE FEDERAL 45-14	SCHL. TD	1331
FIELD	DIXIE VALLEY	DRR: TD	1320
COUNTY	CHURCHILL	STATE	NEVADA
		Elev: KB	3421
		DF	
		GL	3410

5-18-79-10164785
 5-18-79-10164785
 5-18-79-10164785