

GL-34

Schlumberger

DUAL INDUCTION SFL WITH LINEAR CORRELATION LOG

COMPANY: THERMAL POWER COMPANY
 WELL: DIXIE FEDERAL 45-14
 FIELD: DIXIE VALLEY
 COUNTY: CHURCHILL STATE: NEVADA

LOCATION: NORTHWEST 1/4 OF NORTHWEST 1/4 OF SECTION 35, T24N35E, R14E
 COUNTY: CHURCHILL STATE: NEVADA
 DISTRICT: 14
 TWP: 24N
 RANG: 35E
 SEC: 35
 OTHER SERVICE: FBC/CNL/OR

LOG MEASURED FROM: KB
 DISTINGUISHED FROM: KB
 DATE: 6-9-79
 LOG MEASURED FROM: 22 ft Above Form. Datum
 DISTINGUISHED FROM: KB
 DATE: 6-9-79

LOG MEASURED FROM: KB
 DISTINGUISHED FROM: KB
 DATE: 6-9-79

Run No. ONE
 Service Order No. 54849
 Fluid Level: FULL
 Salinity ppm, cl: ---
 Speed F.P.M.: 100

EQUIPMENT DATA
 Panel No. DD-435
 Cartridge No. DA-26
 Sonde No. EA-10
 Mem. Panel No. CA-293
 G.R. Cart No. ---
 G.R. Panel No. ---
 G.R. Card No. ---
 Tape Recorder - (TR) 2927
 Depth Recorder - (DRE) 2733
 Pressure Wheel - (CPM) ---
 Type Centinators E LN
 Stand-Off - Inches 1.1

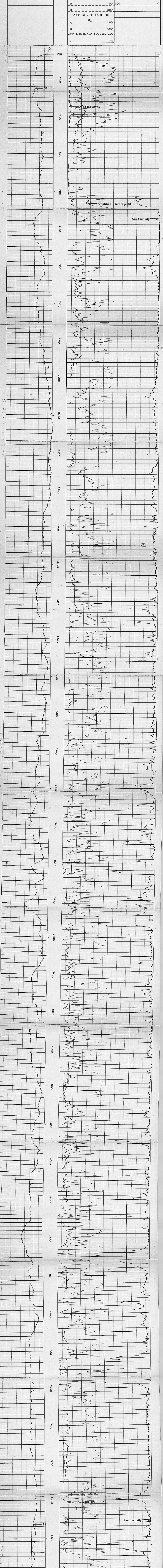
CALIBRATION DATA
 SBR 0.0
 Sonde Error - ILM 0.0
 Sonde Error - LD 4.9
 G.R. BKG. - CPS ---
 G.R. Source - CPS ---
 S.E. Set for Hole - Depth ---
 S.E. Corr. - Hole Size ---

LOGGING DATA
 SBR 1.0
 Sonde Error Log - ILM 0.5
 Sonde Error Log - LD 4.9
 G.R. Scale per 100 Dv. ---
 G.R. - T.C. Log ---

SCALE CHANGES
 Type Log Depth Scale Up Hole Scale Down Hole

REMARKS: S.P. 1.5 FT. SHALLOW

All interpretations are opinions based on inferences from electrical or other measurements and we cannot and do not guarantee the accuracy or correctness of any interpretation, and we shall not, except in the case of gross or willful negligence on our part, be liable or responsible for any loss, cost, damage or expense incurred or sustained by anyone resulting from any interpretation made by any of our officials, agents or employees. These interpretations are also subject to Class A of our General Terms and Conditions as set out in our current Price Schedule.



SPONTANEOUS-POTENTIAL MILLIVOLTS	RESISTIVITY OHMS. M./M. DEEP INDUCTION R _{lib}	CONDUCTIVITY MILLIMHOS/M. DEEP INDUCTION
	Spherically Focused Log R _{sfl}	AMP. SPHERICALLY FOCUSED LOG
DEPTH	0 100 1000 2000	0 100 1000 2000
	0 100 1000 2000	0 20

COMPANY: THERMAL POWER COMPANY
 WELL: DIXIE FEDERAL 45-14
 FIELD: DIXIE VALLEY
 COUNTY: CHURCHILL STATE: NEVADA

SCH. FR. 5404
 SCH. TD. 5410
 DR. TD. 5405
 Elev. KB. 3432
 DF. ---
 GL. 3410