

GL-044 (Rev. 6-25)

Schlumberger

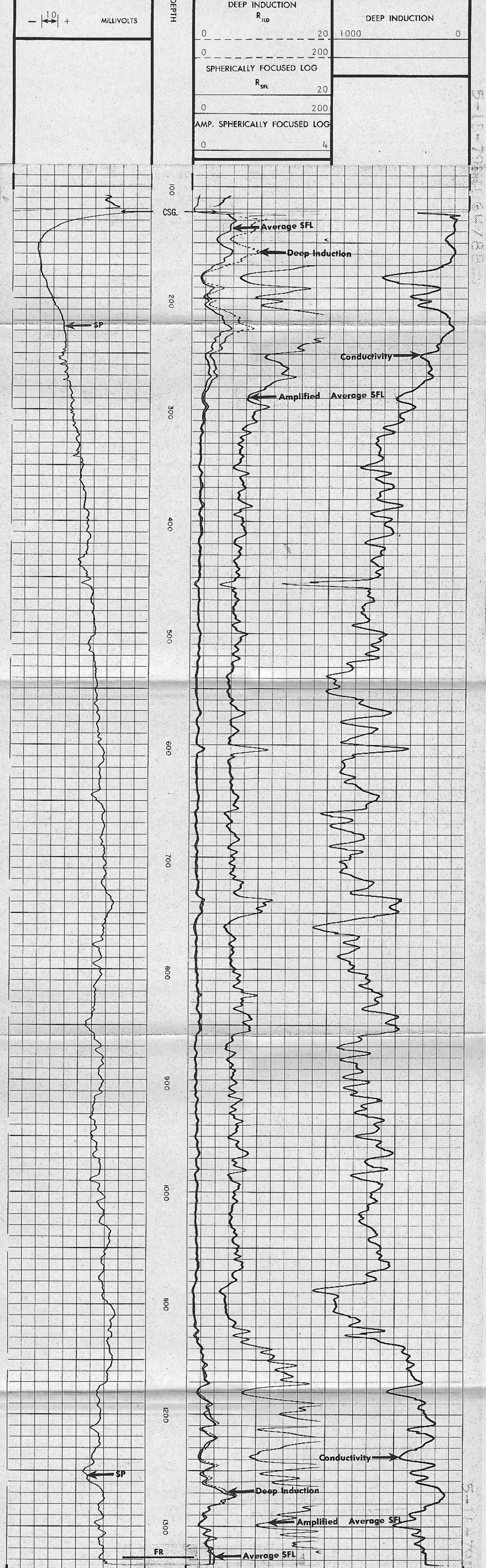
DUAL INDUCTION-SFL  
WITH LINEAR CORRELATION LOG

COUNTY	CHURCHILL	COMPANY	THERMAL POWER
FIELD	DIXIE VALLEY	WELL	DIXIE FEDERAL 45 - 14
LOCATION	14 23N 35E	COUNTY	CHURCHILL
WELL	DIXIE FEDERAL 45-14	STATE	NEVADA
LOGGING DATA			
DATE	5/1/79	PERMIT	GL
RUN NO.	ONE	LOG MEASURED FROM	KB
DEPTH - DRILLER	1330	DRILLING MEASURED FROM	KB
DEPTH - LOGGER (Schl.)	1331	PERMANENT DATUM	GL
Btm. Log Interval	1325	Elev. Above Perm. Datum	21 Ft.
Top Log Interval	121	Elev. KB	3431
Casing - Driller	20" @ 116	Elev. DF	-
Casing - Logger	121	Elev. GL	3410
Bit Size	1 7/8"	Other Services:	NONE
Type Fluid in Hole	MAGCOBAR	AP SERIAL NO.	14
Dens. Visc.	68 45	SEC.	14
Fluid Loss	10.5 14 ml	TWP	23N
Source of Sample	CIRCULATED	RANGE	35E
Rm @ Meas. Temp.	1.27 @ 82 F		
Rinf @ Meas. Temp.	1.87 @ 62 F		
Rmc @ Meas. Temp.	1.59 @ 63 F		
Source Refl	M		
Rm @ SHT	0.71 @ 138 F		
Circulation Stopped	0500		
Logger on Bottom	0800		
Max. Rec. Temp.	138		
Equip. Location	7731 4408		
Recorded By	HUIFEMAN/ANDERSEN		
Witnessed By	BOWDEN		

FOLD HERE The well name, location and borehole reference data were furnished by the customer.

Run No.	ONE	SCALE CHANGES	Type Log	Depth	Scale Up Hole	Scale Down Hole	
Service Order No.	64788	Fluid Level	FULL	Salinity ppm. cl	-	Speed F.P.M.	100
EQUIPMENT DATA							
Panel No.	DD-619	Cartridge No.	DA-100	Sonde No.	EA-83	Mem. Panel No.	CA-337
G.R. Panel No.	-	G.R. Cart No.	-	Tape Recorder - (TTR)	-	Depth Encoder - (DRE)	-
Pressure Wheel - (CPM)	-	Type Centralizers	CALIPER	Stand Off - Inches	-		
CALIBRATION DATA							
SBR	1	Sonde Error - ILM	15.91	Sonde Error - ILD	5.36	G.R. BKG. - CPS.	-
G.R. Source - CPS.	-	S.E. Set In Hole - Depth	-	S.E. Corr. - Hole Size	-		
LOGGING DATA							
SBR	1	Sonde Error Log - ILM	15.91	Sonde Error Log - ILD	5.36	G.R. Scale per 100 Div.	-
G.R. - T.C. Log	-						

All interpretations are opinions based on inferences from electrical or other measurements and we cannot, and do not guarantee the accuracy or correctness of any interpretations, and we shall not, except in the case of gross or willful negligence on our part, be liable or responsible for any loss, costs, damages or expenses incurred or sustained by anyone resulting from any interpretation made by any of our officers, agents or employees. These interpretations are also subject to Clause 4 of our General Terms and Conditions as set out in our current Price Schedule.



SPONTANEOUS-POTENTIAL		RESISTIVITY OHMS. M <sup>2</sup> /M DEEP INDUCTION R <sub>ILD</sub>		CONDUCTIVITY MILLIMHOS/M DEEP INDUCTION	
- 10 + MILLIVOLTS		0 20		1000 0	
		0 200			
		SPHERICALLY FOCUSED LOG R <sub>SFL</sub>			
		0 20			
		AMP. SPHERICALLY FOCUSED LOG			
		0 200			
		0 4			
DEPTH		DEPTH		DEPTH	
COMPANY THERMAL POWER		SCHL. FR 1325		SCHL. TD 1331	
WELL DIXIE FEDERAL 45 - 14		DRIL. TD 1330		Elev. KB 3431	
FIELD DIXIE VALLEY		Elev. DF -		GL 3410	
COUNTY CHURCHILL		STATE NEVADA			