

Schlumberger
 HIGH RESOLUTION
 CONTINUOUS DIPMETER

G. 01484-6
 FORM-ARM

COMPANY: THERMAL POWER COMPANY
 WELL: DIXIE FEDERAL 66-21
 FIELD: DIXIE VALLEY
 COUNTY: CHURCHILL STATE: NEVADA

LOCATION: 21° 24' N 103° 35' W
 COUNTY: CHURCHILL STATE: NEVADA

PERMANENT DRAIN: 3120
 DISTINGUISHED FROM: 3120
 DATE: 7/27/67

TYPE: HDT
 DDP: 0-370
 DFI: 1940
 HDM: 2733
 HDE: 1726
 HDS: 1879
 HDS: 1752
 HDS: 846

TYPE FILM IN HOLES: 35mm
 TYPE FILM IN LOGS: 35mm
 LOGS: 1-2, 2-1, 2-2, 2-3, 2-4, 2-5, 2-6, 2-7, 2-8, 2-9, 2-10, 2-11, 2-12, 2-13, 2-14, 2-15, 2-16, 2-17, 2-18, 2-19, 2-20, 2-21, 2-22, 2-23, 2-24, 2-25, 2-26, 2-27, 2-28, 2-29, 2-30, 2-31, 2-32, 2-33, 2-34, 2-35, 2-36, 2-37, 2-38, 2-39, 2-40, 2-41, 2-42, 2-43, 2-44, 2-45, 2-46, 2-47, 2-48, 2-49, 2-50, 2-51, 2-52, 2-53, 2-54, 2-55, 2-56, 2-57, 2-58, 2-59, 2-60, 2-61, 2-62, 2-63, 2-64, 2-65, 2-66, 2-67, 2-68, 2-69, 2-70, 2-71, 2-72, 2-73, 2-74, 2-75, 2-76, 2-77, 2-78, 2-79, 2-80, 2-81, 2-82, 2-83, 2-84, 2-85, 2-86, 2-87, 2-88, 2-89, 2-90, 2-91, 2-92, 2-93, 2-94, 2-95, 2-96, 2-97, 2-98, 2-99, 2-100, 2-101, 2-102, 2-103, 2-104, 2-105, 2-106, 2-107, 2-108, 2-109, 2-110, 2-111, 2-112, 2-113, 2-114, 2-115, 2-116, 2-117, 2-118, 2-119, 2-120, 2-121, 2-122, 2-123, 2-124, 2-125, 2-126, 2-127, 2-128, 2-129, 2-130, 2-131, 2-132, 2-133, 2-134, 2-135, 2-136, 2-137, 2-138, 2-139, 2-140, 2-141, 2-142, 2-143, 2-144, 2-145, 2-146, 2-147, 2-148, 2-149, 2-150, 2-151, 2-152, 2-153, 2-154, 2-155, 2-156, 2-157, 2-158, 2-159, 2-160, 2-161, 2-162, 2-163, 2-164, 2-165, 2-166, 2-167, 2-168, 2-169, 2-170, 2-171, 2-172, 2-173, 2-174, 2-175, 2-176, 2-177, 2-178, 2-179, 2-180, 2-181, 2-182, 2-183, 2-184, 2-185, 2-186, 2-187, 2-188, 2-189, 2-190, 2-191, 2-192, 2-193, 2-194, 2-195, 2-196, 2-197, 2-198, 2-199, 2-200, 2-201, 2-202, 2-203, 2-204, 2-205, 2-206, 2-207, 2-208, 2-209, 2-210, 2-211, 2-212, 2-213, 2-214, 2-215, 2-216, 2-217, 2-218, 2-219, 2-220, 2-221, 2-222, 2-223, 2-224, 2-225, 2-226, 2-227, 2-228, 2-229, 2-230, 2-231, 2-232, 2-233, 2-234, 2-235, 2-236, 2-237, 2-238, 2-239, 2-240, 2-241, 2-242, 2-243, 2-244, 2-245, 2-246, 2-247, 2-248, 2-249, 2-250, 2-251, 2-252, 2-253, 2-254, 2-255, 2-256, 2-257, 2-258, 2-259, 2-260, 2-261, 2-262, 2-263, 2-264, 2-265, 2-266, 2-267, 2-268, 2-269, 2-270, 2-271, 2-272, 2-273, 2-274, 2-275, 2-276, 2-277, 2-278, 2-279, 2-280, 2-281, 2-282, 2-283, 2-284, 2-285, 2-286, 2-287, 2-288, 2-289, 2-290, 2-291, 2-292, 2-293, 2-294, 2-295, 2-296, 2-297, 2-298, 2-299, 2-300, 2-301, 2-302, 2-303, 2-304, 2-305, 2-306, 2-307, 2-308, 2-309, 2-310, 2-311, 2-312, 2-313, 2-314, 2-315, 2-316, 2-317, 2-318, 2-319, 2-320, 2-321, 2-322, 2-323, 2-324, 2-325, 2-326, 2-327, 2-328, 2-329, 2-330, 2-331, 2-332, 2-333, 2-334, 2-335, 2-336, 2-337, 2-338, 2-339, 2-340, 2-341, 2-342, 2-343, 2-344, 2-345, 2-346, 2-347, 2-348, 2-349, 2-350, 2-351, 2-352, 2-353, 2-354, 2-355, 2-356, 2-357, 2-358, 2-359, 2-360, 2-361, 2-362, 2-363, 2-364, 2-365, 2-366, 2-367, 2-368, 2-369, 2-370, 2-371, 2-372, 2-373, 2-374, 2-375, 2-376, 2-377, 2-378, 2-379, 2-380, 2-381, 2-382, 2-383, 2-384, 2-385, 2-386, 2-387, 2-388, 2-389, 2-390, 2-391, 2-392, 2-393, 2-394, 2-395, 2-396, 2-397, 2-398, 2-399, 2-400, 2-401, 2-402, 2-403, 2-404, 2-405, 2-406, 2-407, 2-408, 2-409, 2-410, 2-411, 2-412, 2-413, 2-414, 2-415, 2-416, 2-417, 2-418, 2-419, 2-420, 2-421, 2-422, 2-423, 2-424, 2-425, 2-426, 2-427, 2-428, 2-429, 2-430, 2-431, 2-432, 2-433, 2-434, 2-435, 2-436, 2-437, 2-438, 2-439, 2-440, 2-441, 2-442, 2-443, 2-444, 2-445, 2-446, 2-447, 2-448, 2-449, 2-450, 2-451, 2-452, 2-453, 2-454, 2-455, 2-456, 2-457, 2-458, 2-459, 2-460, 2-461, 2-462, 2-463, 2-464, 2-465, 2-466, 2-467, 2-468, 2-469, 2-470, 2-471, 2-472, 2-473, 2-474, 2-475, 2-476, 2-477, 2-478, 2-479, 2-480, 2-481, 2-482, 2-483, 2-484, 2-485, 2-486, 2-487, 2-488, 2-489, 2-490, 2-491, 2-492, 2-493, 2-494, 2-495, 2-496, 2-497, 2-498, 2-499, 2-500, 2-501, 2-502, 2-503, 2-504, 2-505, 2-506, 2-507, 2-508, 2-509, 2-510, 2-511, 2-512, 2-513, 2-514, 2-515, 2-516, 2-517, 2-518, 2-519, 2-520, 2-521, 2-522, 2-523, 2-524, 2-525, 2-526, 2-527, 2-528, 2-529, 2-530, 2-531, 2-532, 2-533, 2-534, 2-535, 2-536, 2-537, 2-538, 2-539, 2-540, 2-541, 2-542, 2-543, 2-544, 2-545, 2-546, 2-547, 2-548, 2-549, 2-550, 2-551, 2-552, 2-553, 2-554, 2-555, 2-556, 2-557, 2-558, 2-559, 2-560, 2-561, 2-562, 2-563, 2-564, 2-565, 2-566, 2-567, 2-568, 2-569, 2-570, 2-571, 2-572, 2-573, 2-574, 2-575, 2-576, 2-577, 2-578, 2-579, 2-580, 2-581, 2-582, 2-583, 2-584, 2-585, 2-586, 2-587, 2-588, 2-589, 2-590, 2-591, 2-592, 2-593, 2-594, 2-595, 2-596, 2-597, 2-598, 2-599, 2-600, 2-601, 2-602, 2-603, 2-604, 2-605, 2-606, 2-607, 2-608, 2-609, 2-610, 2-611, 2-612, 2-613, 2-614, 2-615, 2-616, 2-617, 2-618, 2-619, 2-620, 2-621, 2-622, 2-623, 2-624, 2-625, 2-626, 2-627, 2-628, 2-629, 2-630, 2-631, 2-632, 2-633, 2-634, 2-635, 2-636, 2-637, 2-638, 2-639, 2-640, 2-641, 2-642, 2-643, 2-644, 2-645, 2-646, 2-647, 2-648, 2-649, 2-650, 2-651, 2-652, 2-653, 2-654, 2-655, 2-656, 2-657, 2-658, 2-659, 2-660, 2-661, 2-662, 2-663, 2-664, 2-665, 2-666, 2-667, 2-668, 2-669, 2-670, 2-671, 2-672, 2-673, 2-674, 2-675, 2-676, 2-677, 2-678, 2-679, 2-680, 2-681, 2-682, 2-683, 2-684, 2-685, 2-686, 2-687, 2-688, 2-689, 2-690, 2-691, 2-692, 2-693, 2-694, 2-695, 2-696, 2-697, 2-698, 2-699, 2-700, 2-701, 2-702, 2-703, 2-704, 2-705, 2-706, 2-707, 2-708, 2-709, 2-710, 2-711, 2-712, 2-713, 2-714, 2-715, 2-716, 2-717, 2-718, 2-719, 2-720, 2-721, 2-722, 2-723, 2-724, 2-725, 2-726, 2-727, 2-728, 2-729, 2-730, 2-731, 2-732, 2-733, 2-734, 2-735, 2-736, 2-737, 2-738, 2-739, 2-740, 2-741, 2-742, 2-743, 2-744, 2-745, 2-746, 2-747, 2-748, 2-749, 2-750, 2-751, 2-752, 2-753, 2-754, 2-755, 2-756, 2-757, 2-758, 2-759, 2-760, 2-761, 2-762, 2-763, 2-764, 2-765, 2-766, 2-767, 2-768, 2-769, 2-770, 2-771, 2-772, 2-773, 2-774, 2-775, 2-776, 2-777, 2-778, 2-779, 2-780, 2-781, 2-782, 2-783, 2-784, 2-785, 2-786, 2-787, 2-788, 2-789, 2-790, 2-791, 2-792, 2-793, 2-794, 2-795, 2-796, 2-797, 2-798, 2-799, 2-800, 2-801, 2-802, 2-803, 2-804, 2-805, 2-806, 2-807, 2-808, 2-809, 2-810, 2-811, 2-812, 2-813, 2-814, 2-815, 2-816, 2-817, 2-818, 2-819, 2-820, 2-821, 2-822, 2-823, 2-824, 2-825, 2-826, 2-827, 2-828, 2-829, 2-830, 2-831, 2-832, 2-833, 2-834, 2-835, 2-836, 2-837, 2-838, 2-839, 2-840, 2-841, 2-842, 2-843, 2-844, 2-845, 2-846, 2-847, 2-848, 2-849, 2-850, 2-851, 2-852, 2-853, 2-854, 2-855, 2-856, 2-857, 2-858, 2-859, 2-860, 2-861, 2-862, 2-863, 2-864, 2-865, 2-866, 2-867, 2-868, 2-869, 2-870, 2-871, 2-872, 2-873, 2-874, 2-875, 2-876, 2-877, 2-878, 2-879, 2-880, 2-881, 2-882, 2-883, 2-884, 2-885, 2-886, 2-887, 2-888, 2-889, 2-890, 2-891, 2-892, 2-893, 2-894, 2-895, 2-896, 2-897, 2-898, 2-899, 2-900, 2-901, 2-902, 2-903, 2-904, 2-905, 2-906, 2-907, 2-908, 2-909, 2-910, 2-911, 2-912, 2-913, 2-914, 2-915, 2-916, 2-917, 2-918, 2-919, 2-920, 2-921, 2-922, 2-923, 2-924, 2-925, 2-926, 2-927, 2-928, 2-929, 2-930, 2-931, 2-932, 2-933, 2-934, 2-935, 2-936, 2-937, 2-938, 2-939, 2-940, 2-941, 2-942, 2-943, 2-944, 2-945, 2-946, 2-947, 2-948, 2-949, 2-950, 2-951, 2-952, 2-953, 2-954, 2-955, 2-956, 2-957, 2-958, 2-959, 2-960, 2-961, 2-962, 2-963, 2-964, 2-965, 2-966, 2-967, 2-968, 2-969, 2-970, 2-971, 2-972, 2-973, 2-974, 2-975, 2-976, 2-977, 2-978, 2-979, 2-980, 2-981, 2-982, 2-983, 2-984, 2-985, 2-986, 2-987, 2-988, 2-989, 2-990, 2-991, 2-992, 2-993, 2-994, 2-995, 2-996, 2-997, 2-998, 2-999, 3000

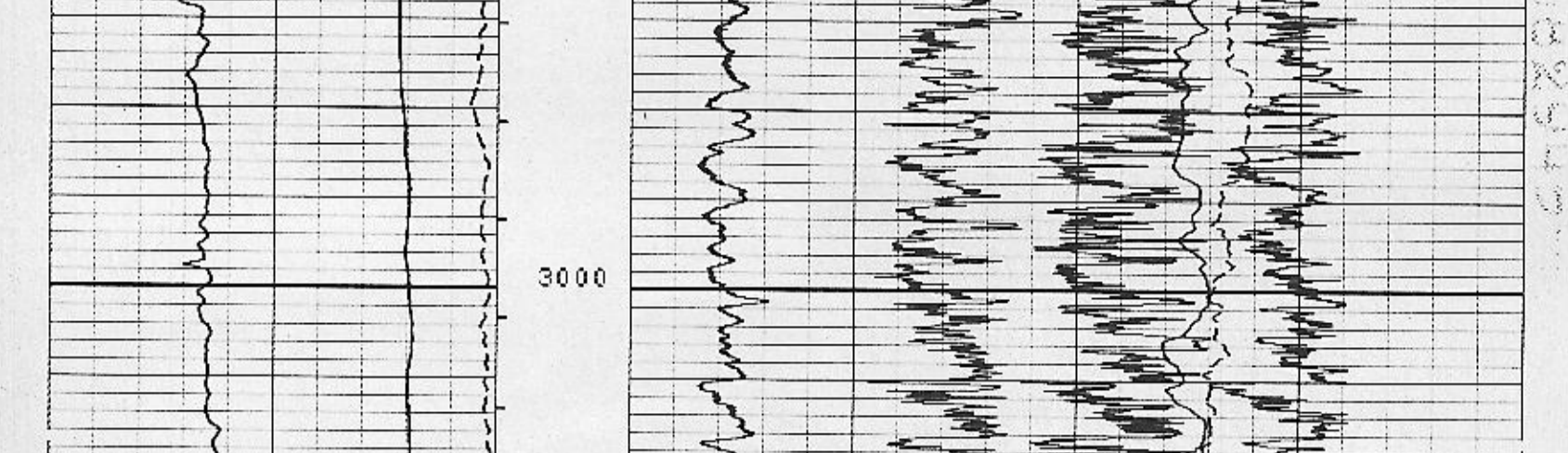
Run No.	1	2	3	4	ROLL NO.	INTERVAL
Tool Type	HDT					
DDP	0-370					
DFI	1940					
HDM	2733					
HDE	1726					
HDS	1879					
HDS	1752					
HDS	846					
Adaptor Head						
5" Film 10" Record						
Exposure	Digital					
Circulation Stopped	1930	X				
Schl. on Bottom	0700					

TOOL AZIMUTH AND HOLE DIRECTION CALCULATION

(DHD) HIGH SIDE OF TOOL — Direction from center of tool to upper side of tool.
 (N) NORTH — Direction from center of tool to Magnetic North.
 (RR) REFERENCE ELECTRODE — Direction from center of tool to R1 electrode.

DEFINITIONS

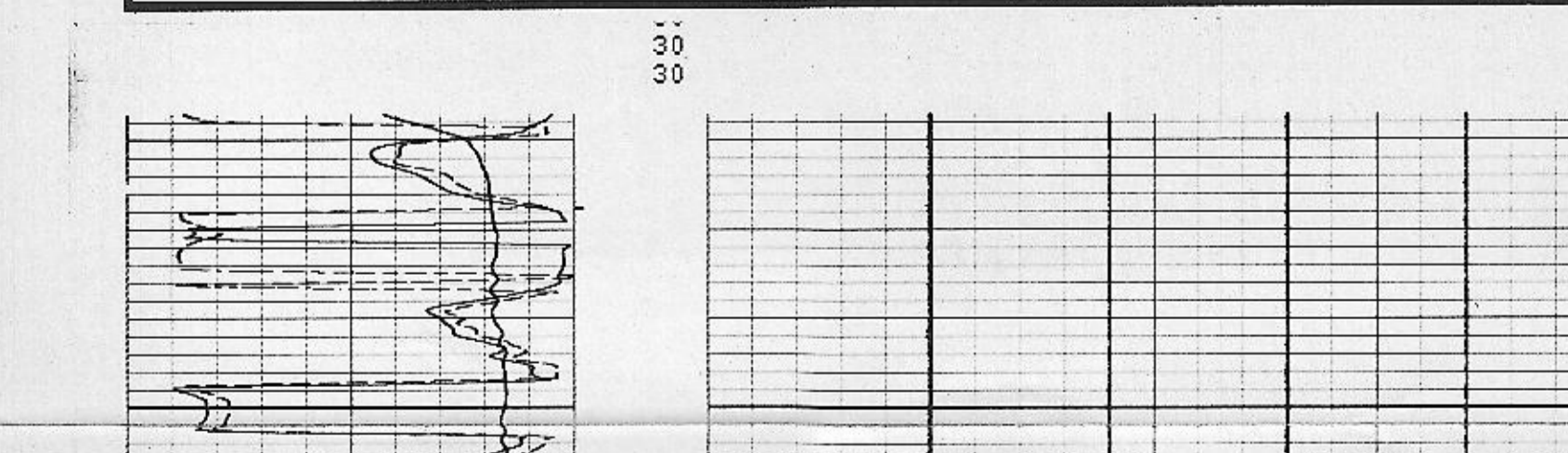
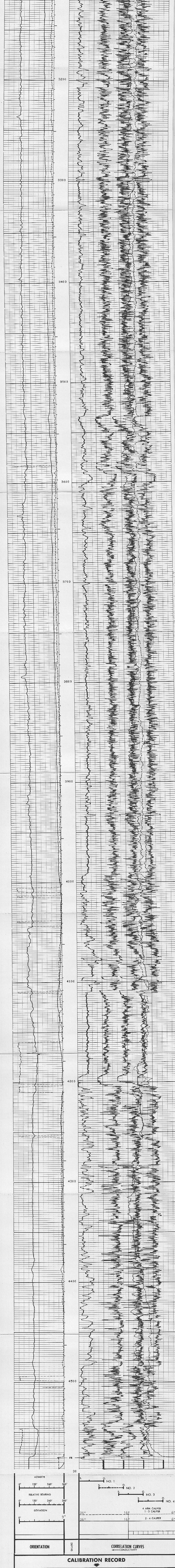
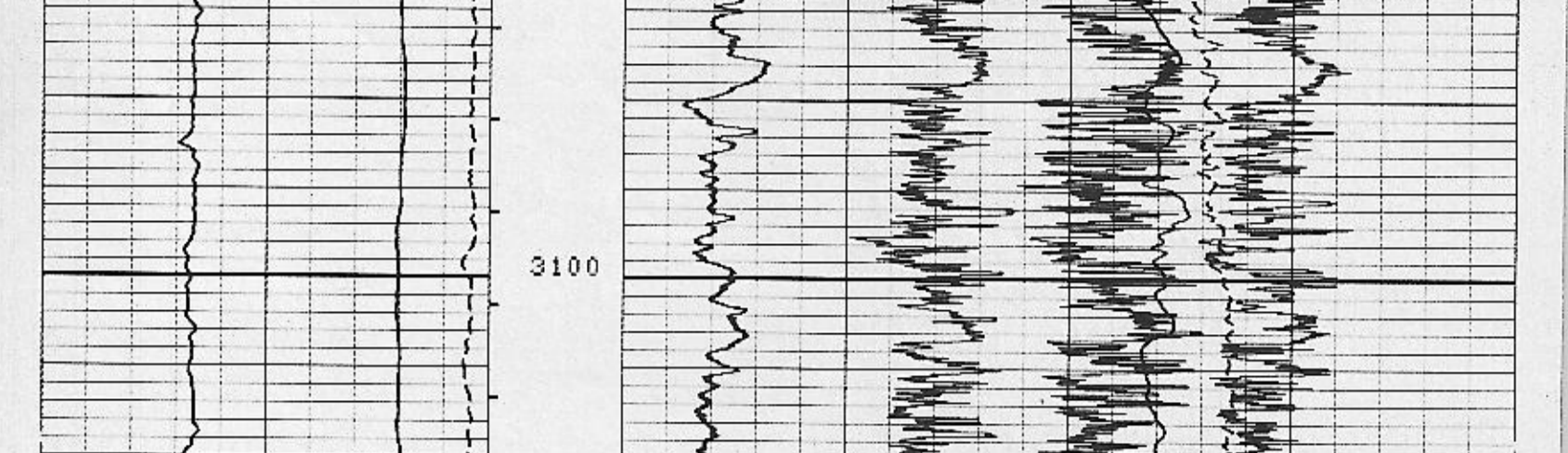
AZI — AZIMUTH OF REFERENCE ELECTRODE — Clockwise angle from N to REF.
 (RR) RELATIVE BEARING — Clockwise angle from DHD to REF.
 (AHD) AZIMUTH OF HOLE DEV. (TOOL AXIS) — Clockwise angle from N to DHD.



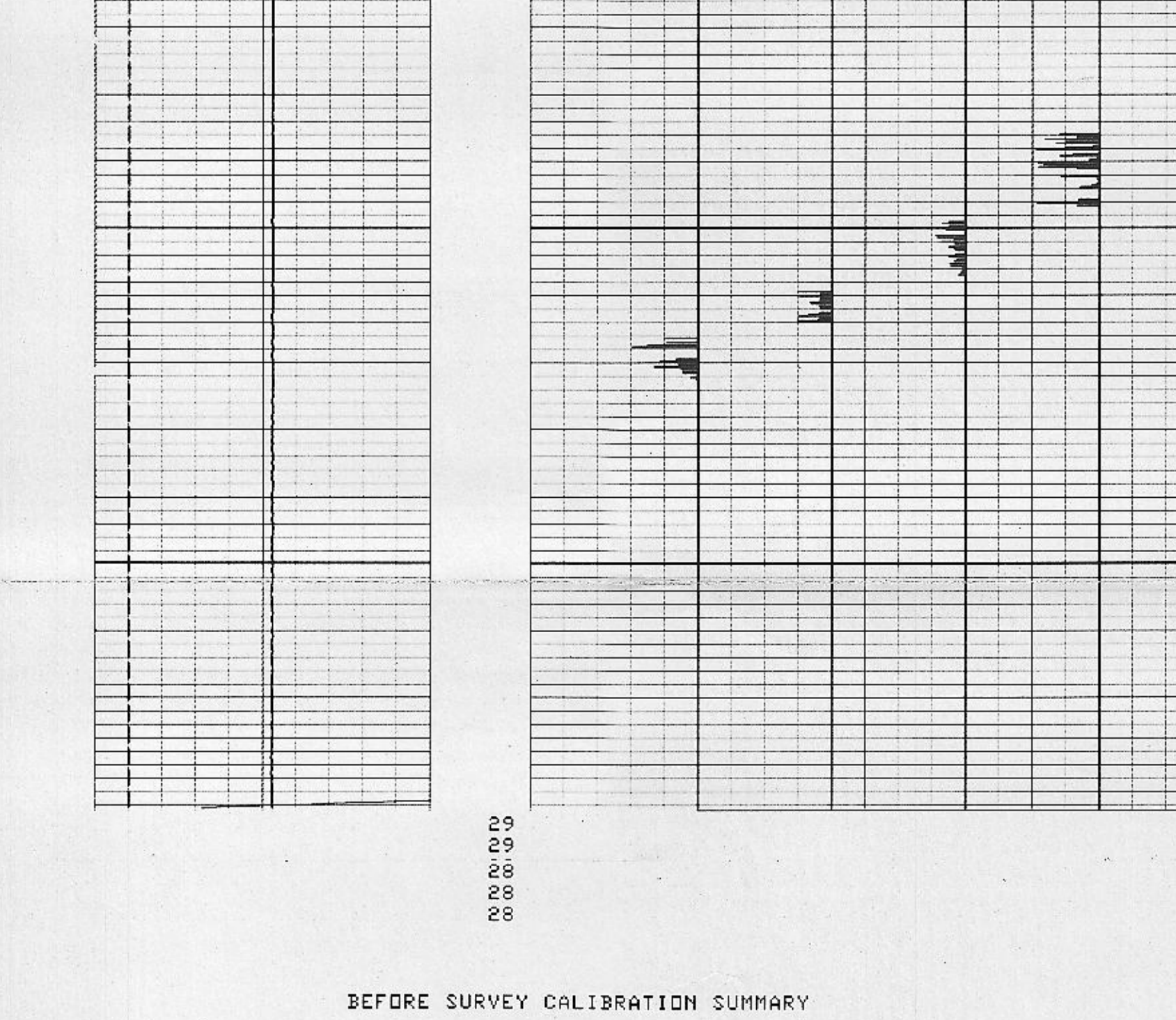
ORIENTATION

RELATIVE BEARING: 0°, 120°, 240°, 360°

DEVIATION: 0°, 9°



CALIBRATION RECORD



BEFORE SURVEY CALIBRATION SUMMARY

PERFORMED: 79/08/03
 PROGRAM FILE: HDT* VERSION 14.4 79/ 6/ 1)

	MEASURED		CALIBRATED		UNITS
	SMALL	LARGE	SMALL	LARGE	
C1	8.9	13.2	8.0	12.0	IN
C2	8.8	13.2	8.0	12.0	IN

HIGH RESOLUTION DIPMETER CALIBRATION CODING

- MECHANICAL ZERO
- ELECTRICAL ZERO
- FULL SCALE ADJUST
- CALIPER ADJUST AT 6" AND 16" CALIPER 1-3 IS CODED
- CALIPER ADJUST AT 6" AND 16" CALIPER 2-4 IS SOLID
- PAD #1 RESPONSE CHECK
- PAD #2 RESPONSE CHECK
- PAD #3 RESPONSE CHECK
- PAD #4 RESPONSE CHECK
- SONDE HANGING VERTICALLY
- TOOL AND PAD #1 POINTED NORTH
- TOOL ROTATING

COMPANY: THERMAL POWER COMPANY
 WELL: DIXIE FEDERAL 66-21
 FIELD: DIXIE VALLEY
 COUNTY: CHURCHILL STATE: NEVADA