

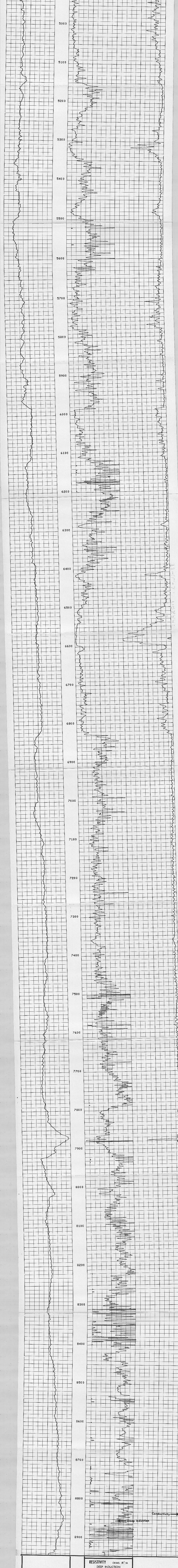
Schlumberger WITH LINEAR CORRELATION LOG		COUNTY CHURCHILL REGION DIXIE VALLEY LOCATION 21-24N-36E WELL DIXIE FEDERAL 66-21	COMPANY THERMAL POWER CO. COMPANY THERMAL POWER COMPANY WELL DIXIE FEDERAL 66-21 FIELD DIXIE VALLEY COUNTY CHURCHILL STATE NEVADA	ONE OF THESE OR BIC MET DI - SEL O. I. 3152 O. I. 3150
Run No. 91-5-79 Log Measured From KB Drilling Measured From KB	Log Measured From KB Drilling Measured From KB	LOCATION 21-24N-36E WELL DIXIE FEDERAL 66-21 FIELD DIXIE VALLEY COUNTY CHURCHILL STATE NEVADA	COMPANY THERMAL POWER CO. COMPANY THERMAL POWER COMPANY WELL DIXIE FEDERAL 66-21 FIELD DIXIE VALLEY COUNTY CHURCHILL STATE NEVADA	ONE OF THESE OR BIC MET DI - SEL O. I. 3152 O. I. 3150

Run No. ONE Service Order No. 64800 Fluid Level FULL Facility Special Speed P.P.M. 100	SCALE CHANGES Type Log Depth Scale Up Hole Scale Down Hole
EQUIPMENT DATA Panel No. 282 Cartridge No. 10 Sonde No. 13 Man. Panel No. CSU G.R. Panel No. G.R. Corr. No. Tape Recorder - (TR) - Depth Encoder - (DE) - Pressure Wheel - (CPM) - Type Centralizer - Stand Off - Inches -	REMARKS
CALIBRATION DATA SAR Sonde Error - ILM Sonde Error - I.D. G.R. BK.C. - CFS G.R. Source - CFS S.E. Set In Hole - Depth S.E. Corr. - Hole Size	
LOGGING DATA SAR Sonde Error Log - ILM Sonde Error Log - I.D. G.R. Scale per 100 Div. G.R. - T.C. Log	

The well name, location and borehole reference data were furnished by the customer.

All interpretations are opinions based on inferences from electrical or other measurements and we cannot, and do not guarantee the accuracy or correctness of any interpretations, and we shall not, except in the case of gross or willful negligence on our part, be liable or responsible for any loss, costs, damages or expenses incurred or sustained by anyone resulting from any interpretations made by any of our officers, agents or employees. These interpretations are also subject to Clause 4 of our General Terms and Conditions of Sale or at our current Price Schedule.

SPONTANEOUS POTENTIAL MILLIVOLTS 10 + -	RESISTIVITY OHMS M ² /M DEEP INDUCTION R_{100} 0 100 0 1000	CONDUCTIVITY MILLIMHOS/M DEEP INDUCTION 500 0
--	--	---



SPONTANEOUS POTENTIAL MILLIVOLTS 10 + -	RESISTIVITY OHMS M ² /M DEEP INDUCTION R_{100} 0 100 0 1000	CONDUCTIVITY MILLIMHOS/M DEEP INDUCTION 500 0
COMPANY THERMAL POWER COMPANY WELL DIXIE FEDERAL 66-21 FIELD DIXIE VALLEY COUNTY CHURCHILL STATE NEVADA	SCHL. FR 8836 SCHL. TD 8912 DRLR. TD 8947 Elev. KB 3453 DE 3452 GL 3430	