

Well Log Form with header 'Schlumberger' and 'Wellbore ID'. Includes fields for COMPANY (AMAX FABRICATION), WELL (WILKINSON), COUNTY (FAYET), STATE (MISSISSIPPI), LOCATION (N 50° E, 4 1/2 MI. S. 23.5 E.), and various technical specifications like LOGGING METHOD (SPEAR), LOGGING SPEED (1000 F.P.M.), and LOGGING DATE (12/15/60).

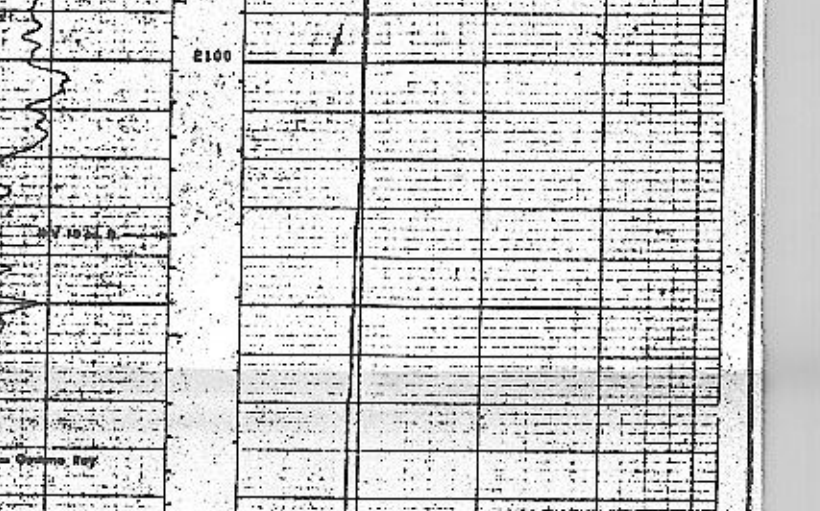
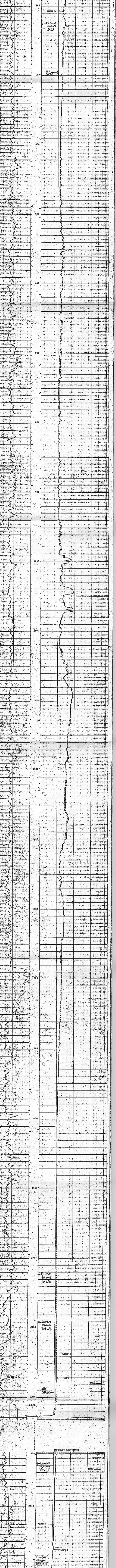
CL 01173.5

Reported by: Petroleum Information, Minimum, Texas 79011. REFERENCE: K 7509H. (P) 1. COMPLETION RECORD. Includes fields for SHUT DATE, COMP DATE, DST RECORD, APE NO., CASING RECORD, PERFORATING RECORD, and ACID FRAC SHOT.

REPRODUCTION FOR RESALE PERMITTED

LOGGING METHOD	LOGGING SPEED	LOGGING DATE	LOGGING TIME	LOGGING LOCATION
SPEAR	1000 F.P.M.	12/15/60		

NAME	UNIT	VALUE	NAME	UNIT	VALUE	NAME	UNIT	VALUE
BD	INCH	9.0	BHS	INCH	17.00			
HCT	SEC	36						



NAME	UNIT	VALUE	NAME	UNIT	VALUE	NAME	UNIT	VALUE
BD	INCH	9.0	BHS	INCH	17.00			
HCT	SEC	36						

BEFORE SURVEY CALIBRATION SUMMARY

PERFORMED: 09/22/61 VERSION: 16.4 7/21/60

DETECTOR CALIBRATION SUMMARY

REAGERS: 1 CALIBRATED UNITS

GAP: 2.5% UNITS

GAFF: 165 UNITS

DETECTOR CALIBRATION SUMMARY

REAGERS: 1 CALIBRATED UNITS

GAP: 2.5% UNITS

GAFF: 165 UNITS