

SCHUMBERGER
ANALYTICAL CORRELATION

COMPANY: **ANAL Exploration**

WELL: **Lilac** AREA: **AR-1**

COUNTY: **Flake** STATE: **NEBRASKA**

LOG NO.: **5** MIN: **51.6** SEC: **0.0**

LOG DATE: **11/14/53**

LOG TIME: **3:30 AM**

LOG TYPE: **LOG**

LOG BY: **W. J. ...**

LOG CHECKED BY: **...**

LOG APPROVED BY: **...**

LOG REVISIONS: **...**

LOG COMMENTS: **...**

Standardized by
Petroleum Information.
Minimum Texas Form

REFERENCE X 7506X

① **COMPLETION RECORD**

SPUD DATE: _____

COMP DATE: _____

DRY RECORD: _____

API NO.: **23-000-00001**

LOGGING RECORD: _____

PERFORATING RECORD: _____

ACID FRAC SURT: _____

IP: _____

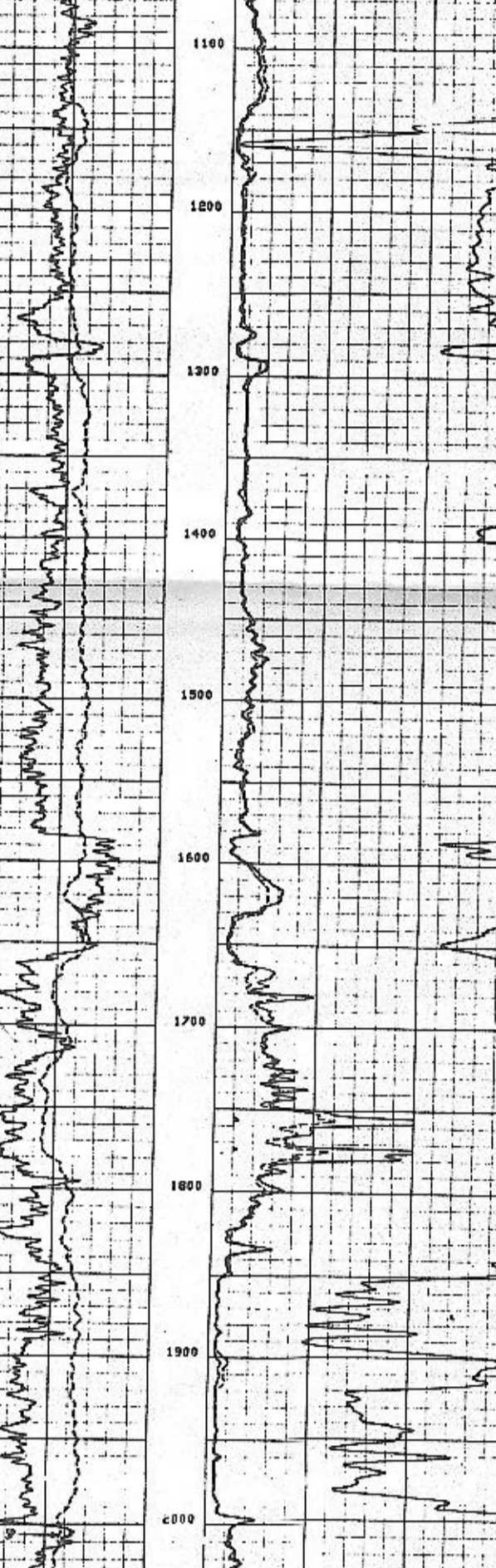
GR: _____

LP: _____

EP: _____

REMARKS: _____

MEASURE	UNIT	VALUE	MEASURE	UNIT	VALUE	MEASURE	UNIT	VALUE
SD	0.0	0.0	FPMI	PMIX				
OR (GAP)	389.0	0.0	ILS (CORR)	100.0				
OR (GAP)	190.0	0.0	ILS (CORR)	100.0				
OR (COR)	0.0	0.0	SEAL (CORR)	0.0				



MEASURE	UNIT	VALUE	MEASURE	UNIT	VALUE	MEASURE	UNIT	VALUE
SD	0.0	0.0	FPMI	PMIX				
OR (GAP)	389.0	0.0	ILS (CORR)	100.0				
OR (GAP)	190.0	0.0	ILS (CORR)	100.0				
OR (COR)	0.0	0.0	SEAL (CORR)	0.0				

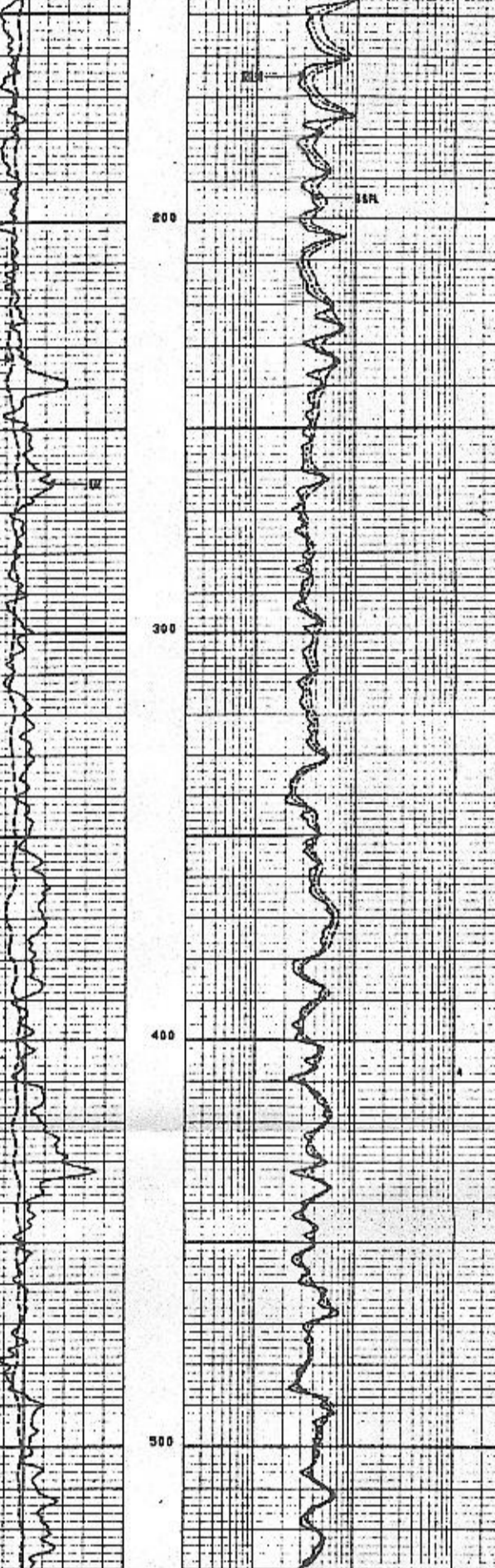
AFTER SURVEY TOOL CHECK SUMMARY

PERFORMED: **80/30/53** VERSION: **14.4** 7/9/12/10

DITS	BEFORE	AFTER	BEFORE	AFTER	UNITS
ILS	0.0	0.0	499.9	499.9	HR/H
ILS	0.0	0.0	499.9	499.9	HR/H
ILS	0.0	0.0	499.9	499.9	HR/H

DETAIL LOG

MEASURE	UNIT	VALUE	MEASURE	UNIT	VALUE	MEASURE	UNIT	VALUE
SD	0.0	0.0	FPMI	PMIX				
OR (GAP)	389.0	0.0	ILS (CORR)	100.0				
OR (GAP)	190.0	0.0	ILS (CORR)	100.0				
OR (COR)	0.0	0.0	SEAL (CORR)	0.0				



REPEAT SECTION

MEASURE	UNIT	VALUE	MEASURE	UNIT	VALUE	MEASURE	UNIT	VALUE
SD	0.0	0.0	FPMI	PMIX				
OR (GAP)	389.0	0.0	ILS (CORR)	100.0				
OR (GAP)	190.0	0.0	ILS (CORR)	100.0				
OR (COR)	0.0	0.0	SEAL (CORR)	0.0				

BEFORE SURVEY CALIBRATION SUMMARY

PERFORMED: **80/30/53** VERSION: **14.4** 7/9/12/10

DITS	BEFORE	AFTER	BEFORE	AFTER	UNITS
ILS	0.0	0.0	499.9	499.9	HR/H
ILS	0.0	0.0	499.9	499.9	HR/H
ILS	0.0	0.0	499.9	499.9	HR/H

SITE DETECTOR CALIBRATION SUMMARY

MEASURE	UNIT	VALUE	MEASURE	UNIT	VALUE
SD	0.0	0.0	FPMI	PMIX	

POTK CALIPER CALIBRATION SUMMARY

MEASURE	UNIT	VALUE	MEASURE	UNIT	VALUE
SD	0.0	0.0	FPMI	PMIX	

BEFORE SURVEY CALIBRATION SUMMARY

PERFORMED: **80/30/53** VERSION: **14.4** 7/9/12/10

DITS	BEFORE	AFTER	BEFORE	AFTER	UNITS
ILS	0.0	0.0	499.9	499.9	HR/H
ILS	0.0	0.0	499.9	499.9	HR/H
ILS	0.0	0.0	499.9	499.9	HR/H

SITE DETECTOR CALIBRATION SUMMARY

MEASURE	UNIT	VALUE	MEASURE	UNIT	VALUE
SD	0.0	0.0	FPMI	PMIX	

POTK CALIPER CALIBRATION SUMMARY

MEASURE	UNIT	VALUE	MEASURE	UNIT	VALUE
SD	0.0	0.0	FPMI	PMIX	

BEFORE SURVEY CALIBRATION SUMMARY

PERFORMED: **80/30/53** VERSION: **14.4** 7/9/12/10

DITS	BEFORE	AFTER	BEFORE	AFTER	UNITS
ILS	0.0	0.0	499.9	499.9	HR/H
ILS	0.0	0.0	499.9	499.9	HR/H
ILS	0.0	0.0	499.9	499.9	HR/H

SITE DETECTOR CALIBRATION SUMMARY

MEASURE	UNIT	VALUE	MEASURE	UNIT	VALUE
SD	0.0	0.0	FPMI	PMIX	

POTK CALIPER CALIBRATION SUMMARY

MEASURE	UNIT	VALUE	MEASURE	UNIT	VALUE
SD	0.0	0.0	FPMI	PMIX	