

SONIC LOG

HEADQUARTERS
GEARHART-OWEN

WELL: **WEL TUSGROGA 444-5**
FIELD: **WADDER**
COUNTY: **SAKON** STATE: **OKLA**

COMPANY: **AMAX PRODUCTION INC**

LOG NO: **412180**

LOG DATE: **04-28-80**

LOG TIME: **01:36**

LOG DEPTH: **2180.5**

LOG TYPE: **SONIC LOG**

LOG BY: **W. J. JAMES**

LOG CHECKED BY: **W. J. JAMES**

LOG APPROVED BY: **W. J. JAMES**

LOG REVIEWED BY: **W. J. JAMES**

LOG REVISIONS:

NO.	DATE	REVISION
1		
2		
3		
4		
5		
6		
7		
8		
9		
10		
11		
12		
13		
14		
15		
16		
17		
18		
19		
20		

Revised By
Petroleum Information

Reference **K 75385**

COMPLETION RECORD

SPUD DATE: _____

COMP DATE: _____

API NO.: _____

CASING RECORD

PERFORMING RECORD

ACID FROG SHOT

IP

GR

CP

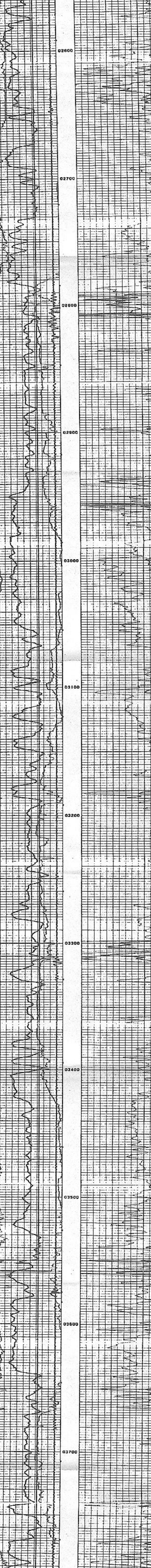
REMARKS:

REPRODUCTION FOR RESALE PROHIBITED

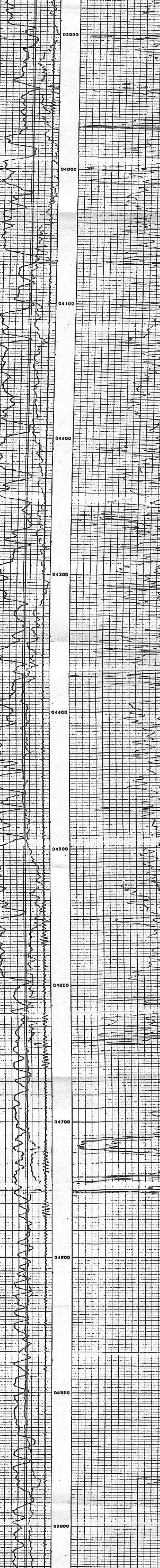
For	Company	Service	Scale	Time	Rate	API	Grade	Size	CP
OK	AMAX	SONIC LOG	40	30	3.0	3.0	40	40	40

GAMMA RAY		SONIC LOG	
API UNITS	FT	INTERVAL TRAVEL TIME	FT
100	100	140	40
CALIPER		30%	10%
HOLE SIZE - INCHES			

04-28-80	01:36	2180.5	94395	0049-20	2
S	CALIPER X 18	140	BCS AT	40	
G	GR API 100	30	#1BCS1	-10	

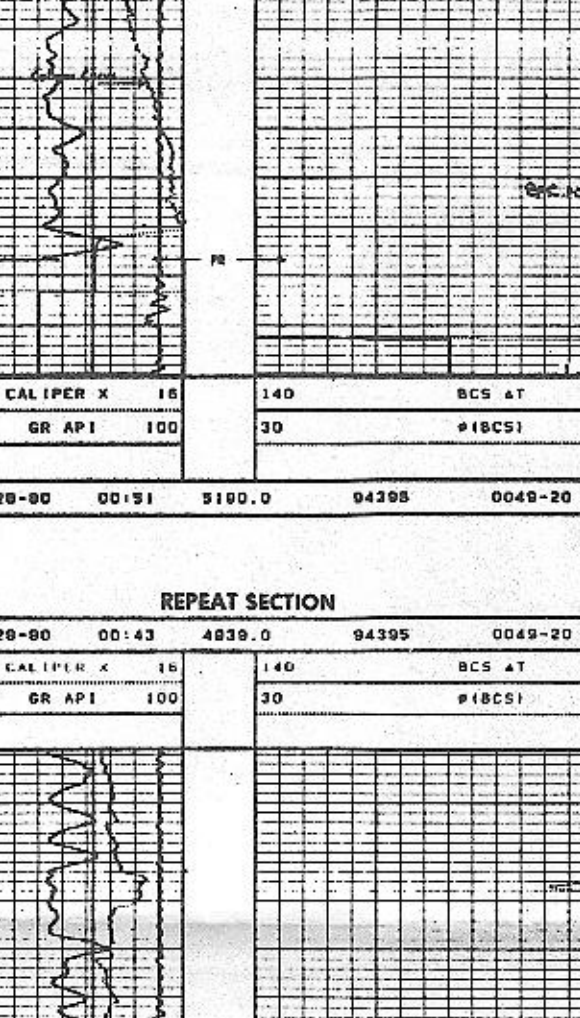


04-28-80	00:51	9180.0	94395	0049-20	1
S	CALIPER X 18	140	BCS AT	40	
G	GR API 100	30	#1BCS1	-10	

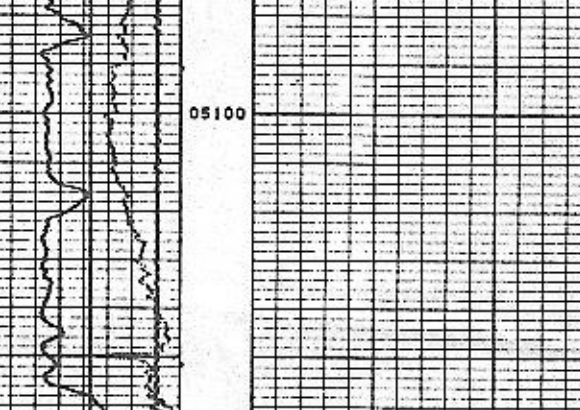


REPEAT SECTION

04-28-80	00:43	4839.0	94395	0049-20	1
S	CALIPER X 18	140	BCS AT	40	
G	GR API 100	30	#1BCS1	-10	



04-28-80	00:38	9180.0	94395	0049-20	1
S	CALIPER X 18	140	BCS AT	40	
G	GR API 100	30	#1BCS1	-10	



04-27-80	00:38	9180.0	94395	0049-20	0
S	CALIPER X 18	140	BCS AT	40	
G	GR API 100	30	#1BCS1	-10	

