

Schlumberger

DIRECTIONAL LOG

COMPUTED

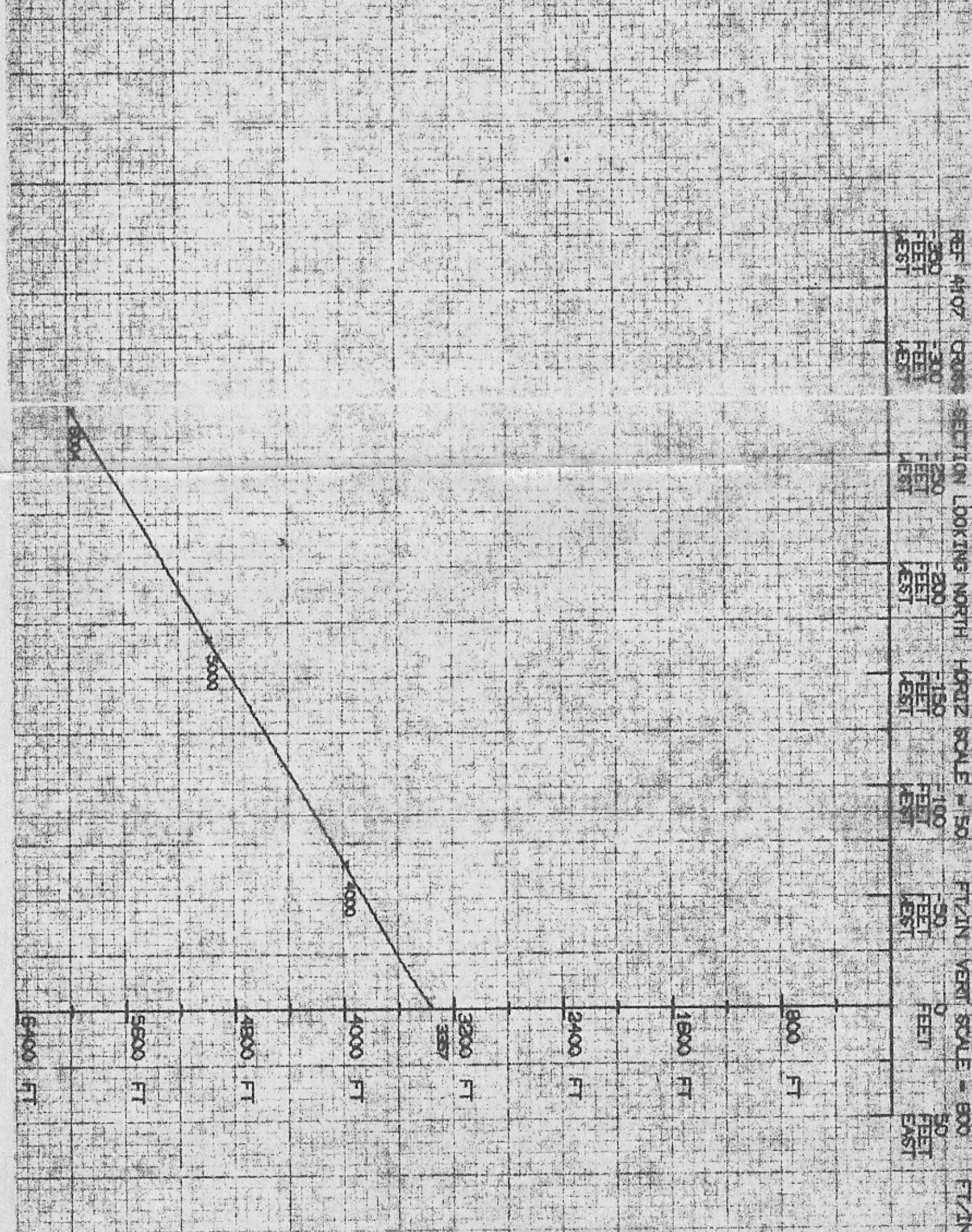
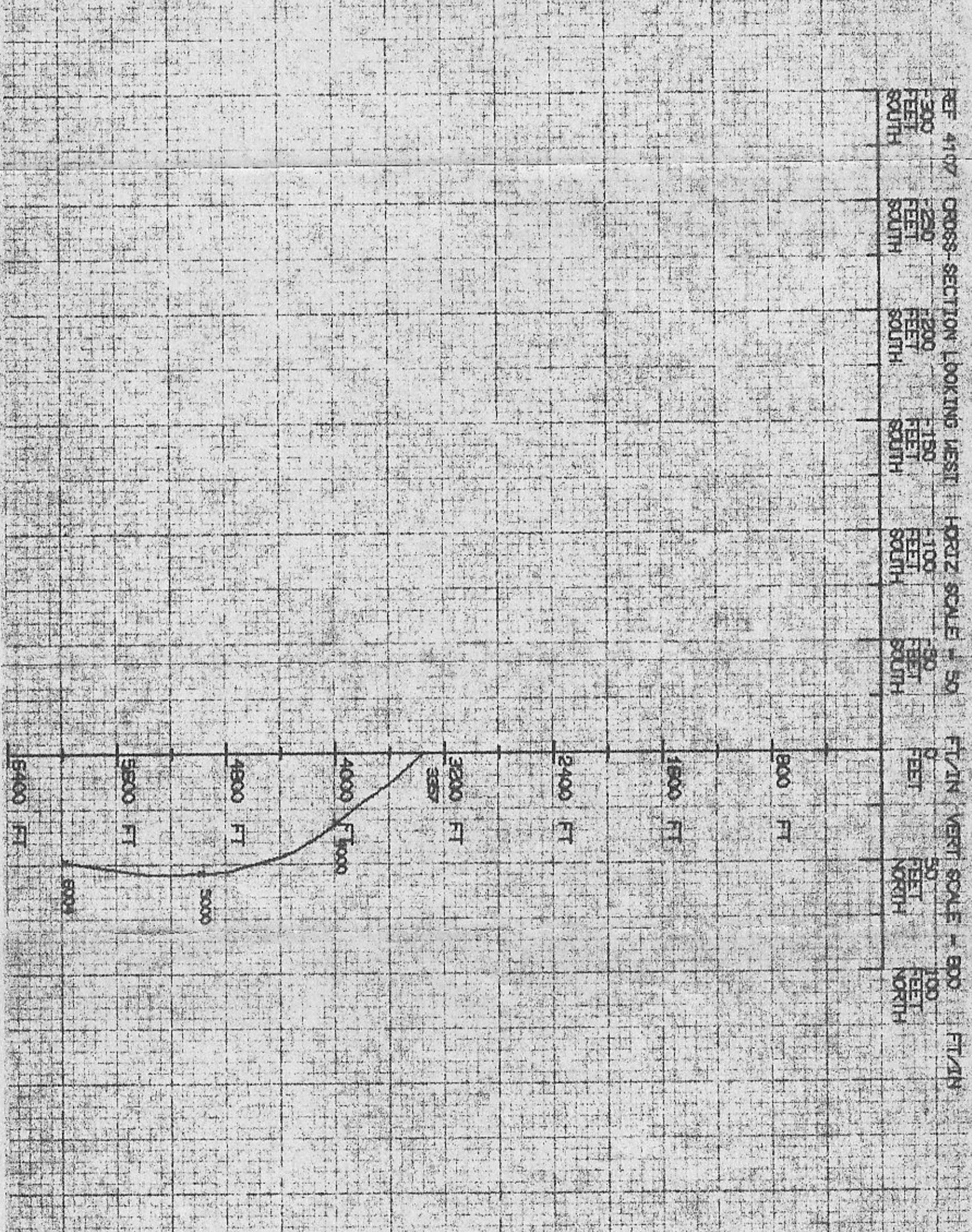
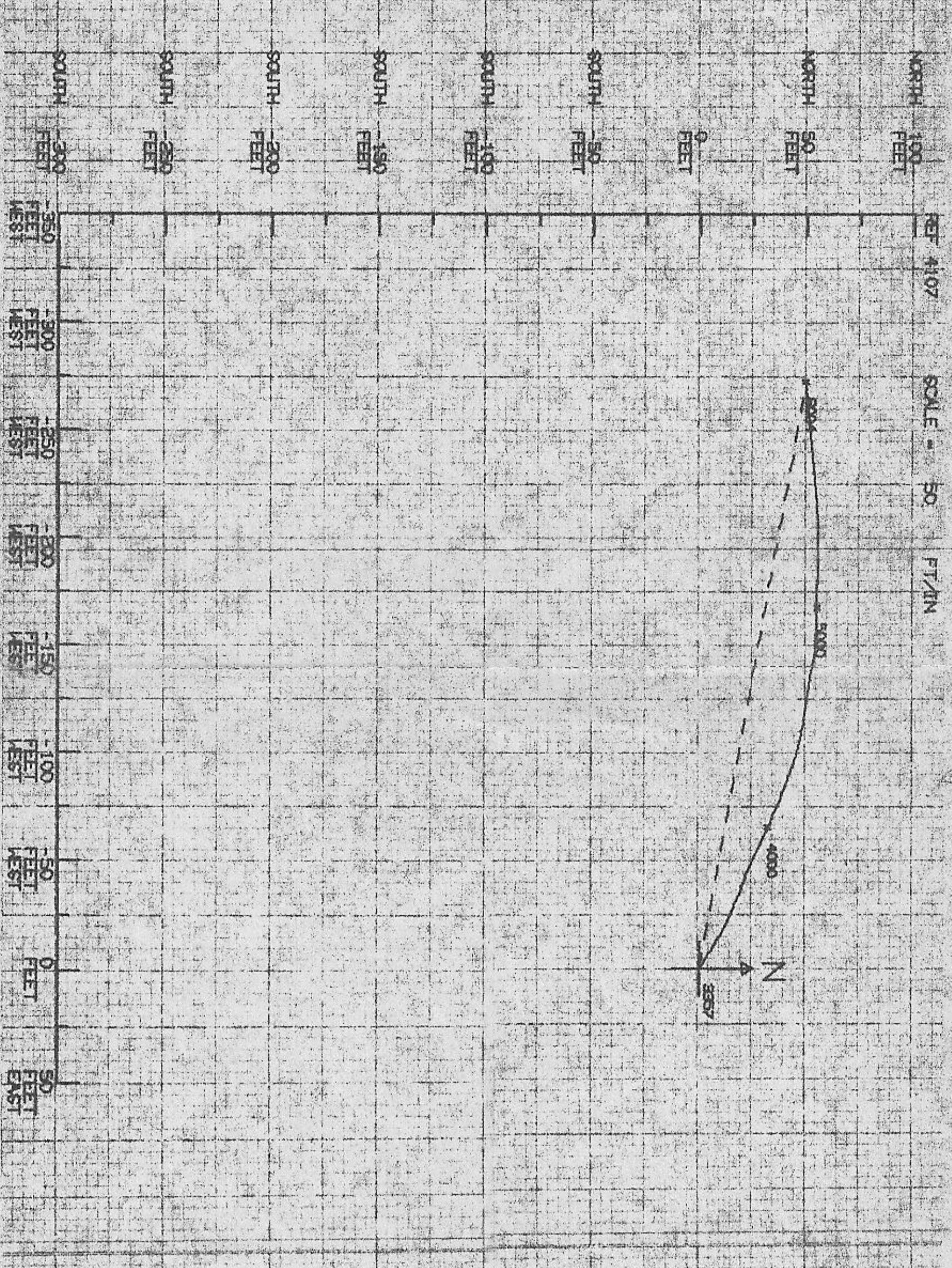
COMPANY UNION OIL COMPANY OF CALIFORNIA

COUNTY BEAVER
 FIELD WILDCAT
 WELL CFS 42-7
 COMPANY UNION OIL CO.
 WELL CFS 42-7
 FIELD WILDCAT
 COUNTY BEAVER STATE UTAH
 LOCATION SE 1/4, NE 1/4, HW 1/4, Twp. 25- Rge. 6E
 Sec. 7

Other Services:
 P.I.
 B.H.C.
 F.P.C./G.H.
 Elevation: 5442
 Log Measured From KB
 Drilling Measured From KB
 Elev. K.B. 6444
 Elev. D.F. 6422
 C.I. 6422

Date 1-1-78
 Run No. 01
 Depth-Griller 17205
 Depth-Logger 6003
 Top Log Interval 1500
 Depth Interval 100
 Depth Interval Between Starts
 Casing Driller 9 S. 832335
 Casing Logbook B-114
 Bit Size 8 1/4
 Type Fluid in Hole FRESH WATER
 Down Visc
 pH Fluid Loss
 Sinker of Samples 1.29 @ 65 F
 Salt in Acid Temp. 2.28 @ 93.8 F
 P.H. @ 80 F 11.4
 Time Since Circ. 2.28
 Filtered by J.M. LINDBOCH
 Recorded by J.M. LINDBOCH
 Witnessed by KATHLENE ENNEBERT

REMARKS: The well name, location and borehole reference data were furnished by the customer. All interpretations are opinions based on information from electrical or other measurements and are correct, and do not represent the accuracy or completeness of any information. We do not accept the responsibility for any errors or omissions in this log. We are not responsible for any damage to or loss of property or equipment caused by the use of this log. We are not responsible for any damage to or loss of property or equipment caused by the use of this log. We are not responsible for any damage to or loss of property or equipment caused by the use of this log.



TANGENTIAL METHOD	
BOTTOM HOLE LOCATION	FEET
COURSE LENGTH	276.4
COURSE AZIMUTH	280.3
MEASURED DEPTH	6004.0
TRUE VERTICAL DEPTH	5988.8
DISTANCE NORTH	48.4
DISTANCE WEST	271.9

COMPANY	UNION OIL COMPANY OF CALIFORNIA	SCHL. FR	6003
WELL	CFS 42-7	SCHL. TD	6004
FIELD	WILDCAT	DRLR. TD	7705
COUNTY	BEAVER	Elev.	KB 6442
STATE	UTAH	DF	6422
		GL	6422