

WIRELINE SERVICES GEARHART - OWEN PRODUCTION LOGGING

DIFFERENTIAL TEMPERATURE LOG

FILE NO. _____ COMPANY _____ UNION OIL COMPANY
 WEL # _____ C.F.S. # _____ 12-7
 COUNTY _____ BEAVER STATE UTAH
 LOCATION _____ DATE _____ 1-24-68 8:20
 SEC. _____ TWP. _____ R. _____
 DATE RUN _____ 1-25-72
 LOG OPER. _____ LOGGING BY _____
 LOG OPER. CONTRACT NO. _____ K-23.

MECHANICAL DATA

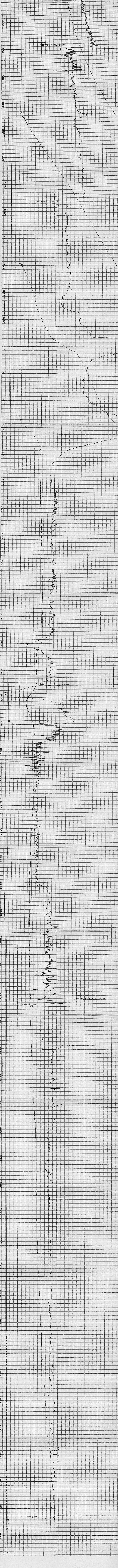
LOGGING RECORD	START	STOP	DEPTH (FEET)	WELL ID
1	8:20	8:35	7313	4582
2	8:35	8:50	1480	4589
3	8:50	9:05	5112	4595
4	9:05	9:20	5124	4595
5	9:20	9:35	5824	4595
6	9:35	9:50	5824	4595
7	9:50	10:05	5824	4595

TUBING RECORD: FROM _____ TO _____
 WEIGHT _____ #/FT
 INNER LAP # _____ 3084
 PRODUCTION DATA: INJECTION RATE _____ B/D, J/S, 45, 45
 TUBING LOSS _____ 2.10
 INJECTION PRESSURE _____ 0

REMARKS:
 1) DIFFERENTIAL TEMPERATURE LOG BHT 326 WELL STATIC
 2) DIFFERENTIAL TEMPERATURE LOG BHT 336 AFTER FLOWING & SHUT IN
 3) SPINNER RUN SHOWS VERY LITTLE DEFINITION
 4) R/A INJECTION PROFILE: THE WATER IS BEING INJECTED INTO THE FOLLOWING ZONES:
 4352 TO 4475 1500 B/D LBS. PER HOUR 27246
 4596 TO 4773 100 B/D LBS. PER HOUR 1458
 4860 TO 4989 100 B/D LBS. PER HOUR 1458
 5112 TO 5319 100 B/D LBS. PER HOUR 1458
 5324 TO 5524 100 B/D LBS. PER HOUR 7962
 5824 & BELOW 424 B/D LBS. PER HOUR 6193

DIFFERENTIAL TEMPERATURE LOG

WELL # _____ WELL STATIC
 STARTED LOG @ _____ 0830 HRS.
 FINISHED LOG @ _____ 1155 HRS.
 LOGGING SPEED _____ 28 FPM



BHT 326