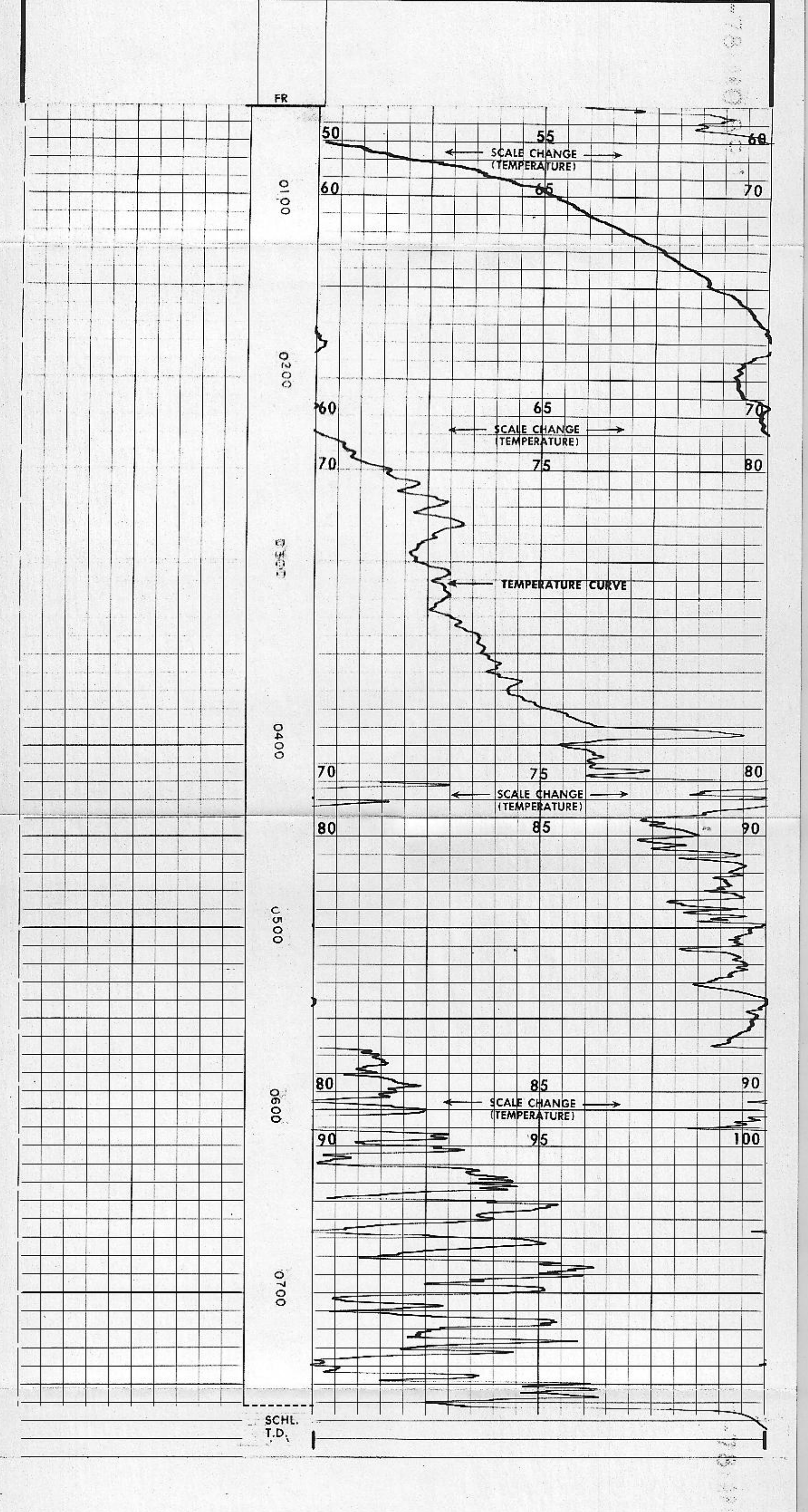


TEMPERATURE LOG

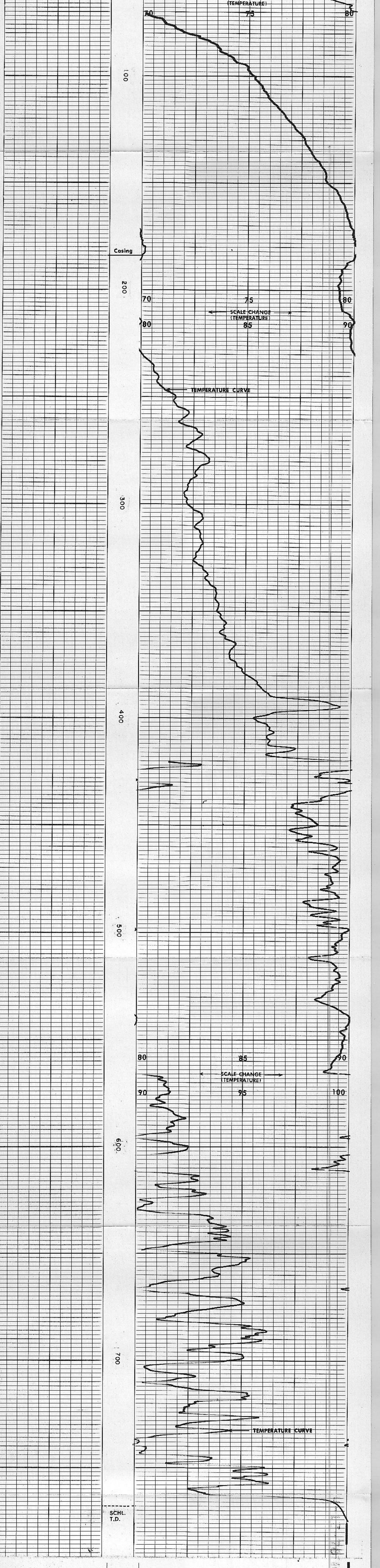
COUNTY BEAVER FIELD or LOCATION SEC. 21 27S 9W WELL USL U-27-391 KGRA 52-21 COMPANY GETTY OIL CO.	COMPANY GETTY OIL COMPANY WELL USL U-27-391 KGRA 52-21 FIELD ROOSEVELT HOT SPRINGS COUNTY BEAVER STATE UTAH LOCATION	Other Services: OIL FDC/CM1-GR BHC-GR G.L. 5860
Date 2/14/78 Run No. 783 Depth-Driller 788 Depth-Logger 788 Log Interval 50 Casing-Driller 20 @ 182 Casing-Logger 182 To SUR Casing Size 182 To SUR Casing Weight 2 -- To -- Casing Thickness 2 -- To -- Bit Size 2 -- To -- Type Fluid in Hole 2 -- To -- Density 2 -- To -- Visc. 2 -- To -- Time Since Circ. 2 -- To -- Equip. Location FARM Recorded By FAHRENBURCH/LEE Witnessed By MR. STAN	Permanent Datum: KB Log Measured From: KB Drilling Measured From: KB Sec. 21 Twp. 27S Rge. 9W Elev.: 5860 Elev.: K.B. 5892 D.F. 5881 G.L. 5860	Filed Here: The well name, location and borehole reference data were furnished by the customer.

REMARKS:

CEMENTATION DATA					
Date	Depth	Type of Cement	Nb of Socks	Additives	Calculated Top
N/A					



DETAIL LOG 5" = 100'



COMPANY GETTY OIL COMPANY WELL USL U-27-391 KGRA 52-21 FIELD ROOSEVELT HOT SPRINGS COUNTY BEAVER STATE UTAH	SCHL. F. R. 76R SCHL. T. D. 76R DRLR. T. D. 765
--	---