

Reproduced By  
*Electrical Log Services*  
 Mesquite, Texas 75101

REFERENCE K 3C35



# AGNEW AND SWEET

## WIRELINE SERVICE

PHONE (805) 377-2267  
 3814 GILMORE AVENUE  
 BAKERSFIELD, CALIFORNIA 93308

### SUBSURFACE PRESSURE SURVEY

OWNER MINERAL POWER FIELD HOOPERVILLE WELL NAME 72-36

**WELL DATA**  
 ZEROPoint Mat - 21' DEPTH 1058' T.D.  
 ELEVATION 2014'  
 CASING 20" to 85', 11-7/8" to 500'

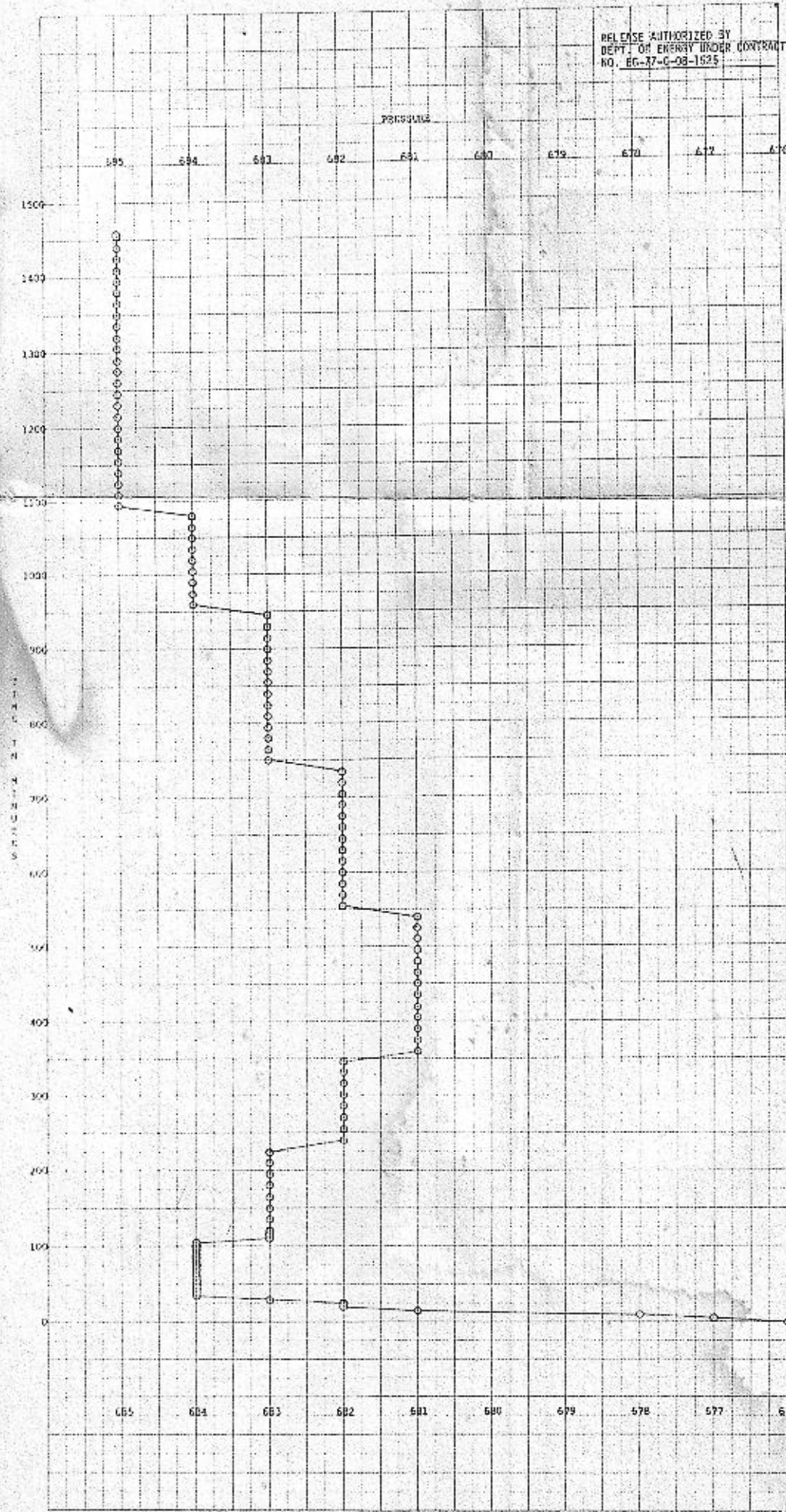
LOG DESCRIPTION 9-5/8" to 1058'

REMARKS

Corrected tubing psi after 24 hrs. 190 psi  
 Max. temperature after 24 hrs. 456°

**SURVEY CONDITIONS**  
 DATE April 15th & 16th, 1977  
 PURPOSE SHUT IN PRESSURE BUILD UP SURVEY  
 REMARKS INSTRUMENT HUNG AT 1226'

72 HOUR 74 HOUR (corrected) SURVEY  
 INSTRUMENT 1600 psi 4" PRESSURE POINT 1750'  
 MAX. TEMPERATURE 467  
 START TIME 10:30 am 4-5-77  
 STOP TIME 12:48  
 STATUS Shut In  
 TIME ON BOTTOM 11:13 am 4-5-77  
 TIME OFF BOTTOM 11:50 am 4-5-77  
 INSTRUMENT HUNG AT 1226' BY HONGSON & CORRELL



#### SUB-SURFACE PRESSURE DATA

DEPTH	PRESS.	DEPTH	PRESS.	DEPTH	PRESS.	DEPTH	PRESS.	DEPTH	PRESS.	DEPTH	PRESS.
MIN.	PRESS.	MIN.	PRESS.	MIN.	PRESS.	MIN.	PRESS.	MIN.	PRESS.	MIN.	PRESS.
INSTRUMENT HUNG AT 1226 FEET FOR 1457 MINUTES											
0	676	115 min.	683	450 min.	681	795 min.	683	1140 min.	685		
5 min.	677	120	683	455	681	810	683	1155	685		
10	678	135	682	460	681	825	683	1170	685		
15	681	150	681	475	681	840	683	1185	685		
20	682	165	682	510	681	855	683	1200	685		
25	682	167	683	525	681	870	683	1215	685		
30	683	195	683	540	681	885	683	1230	685		
35	684	210	683	555	682	900	683	1245	685		
40	684	225	683	570	682	915	683	1260	685		
45	684	240	682	585	682	930	683	1275	685		
50	684	255	682	600	682	945	683	1290	685		
55	684	270	682	615	682	960	684	1305	685		
60	684	285	682	630	682	975	684	1320	685		
65	684	300	682	645	682	990	684	1335	685		
70	684	315	682	660	682	1005	684	1350	685		
75	684	330	682	675	682	1020	684	1365	685		
80	684	345	682	690	682	1035	684	1380	685		
85	684	360	681	705	682	1050	684	1395	685		
90	684	375	681	720	682	1065	684	1410	685		
95	684	390	681	735	682	1080	684	1425	685		
100	684	405	681	750	683	1095	685	1440	685		
105	684	420	681	765	683	1110	685	1455	685		
110	683	435	681	780	683	1125	685	1470	685		