

GL04486

NOV 5 REC'D

END 1/3-

SOUTHWEST DRILLING AND EXPLORATION, INC.

copy to Tom
for Reelayer
Book 1/9/82
JB

GEOTECHNICAL SERVICES GROUP

14009 MIDLAND ROAD • POWAY, CALIFORNIA 92064 • (714) 486-4286

November 2, 1982

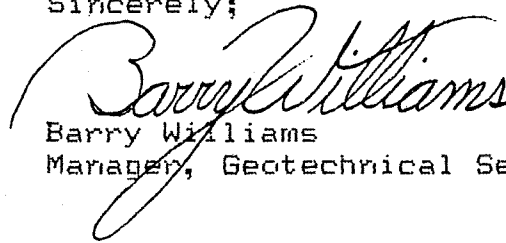
Dr. C. W. Berge
Grace Geothermal Corporation
970 E. 4800 S., Suite 2
Salt Lake City, Utah 84117

Dear Dr. Berge:

Enclosed please find temperature profiles from the first temperature survey run on your well No. 45-14 near Denio, Nevada. Included are copies of the gradient, and interval gradient plots as well as a listing of the temperature/depth data. We are currently running thermal conductivity samples and preparing lithology descriptions for the well.

If you have any questions or would like additional information, please do not hesitate to call.

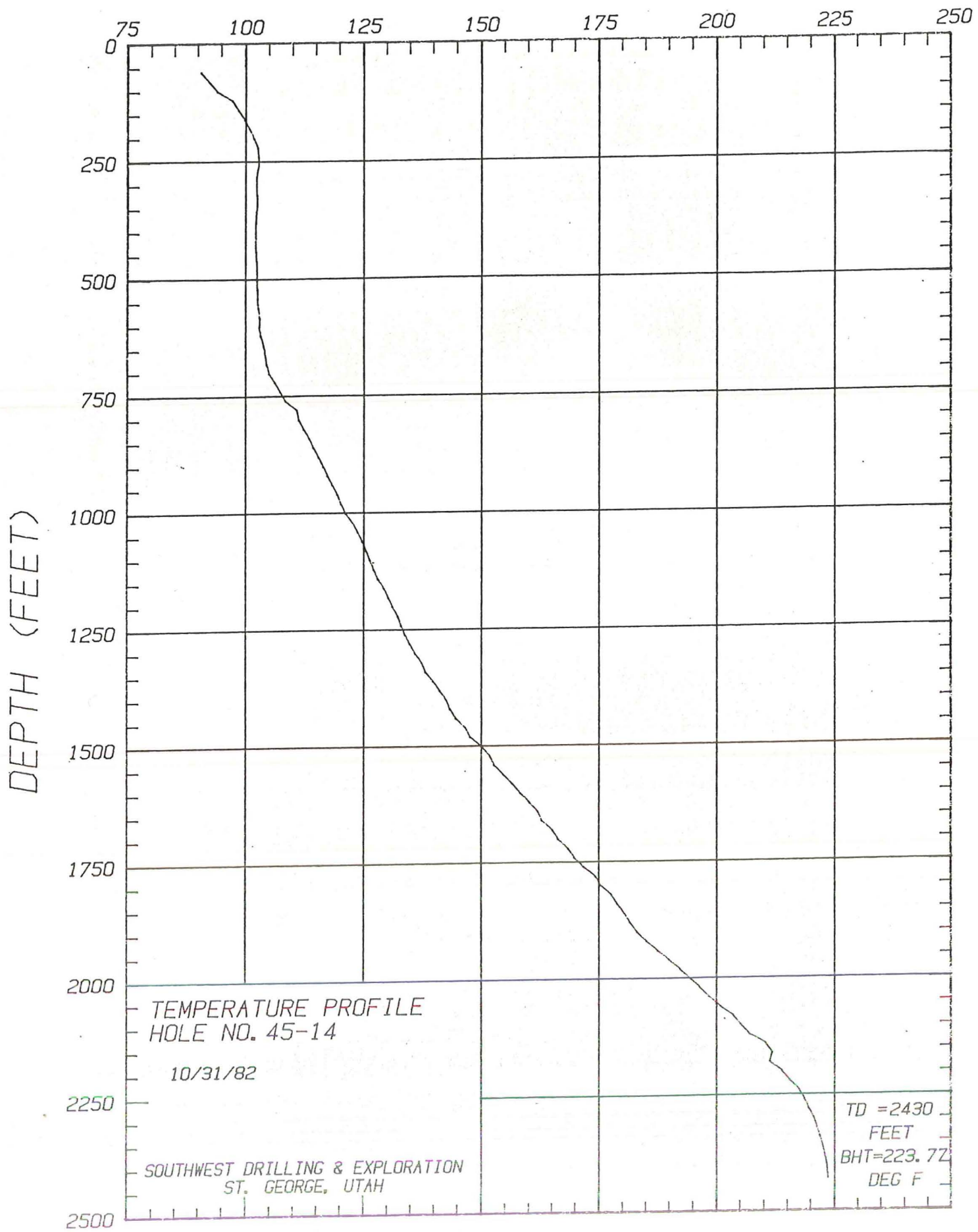
Sincerely;



Barry Williams
Manager, Geotechnical Services

Encl(s)
23-82

TEMPERATURE (°F)



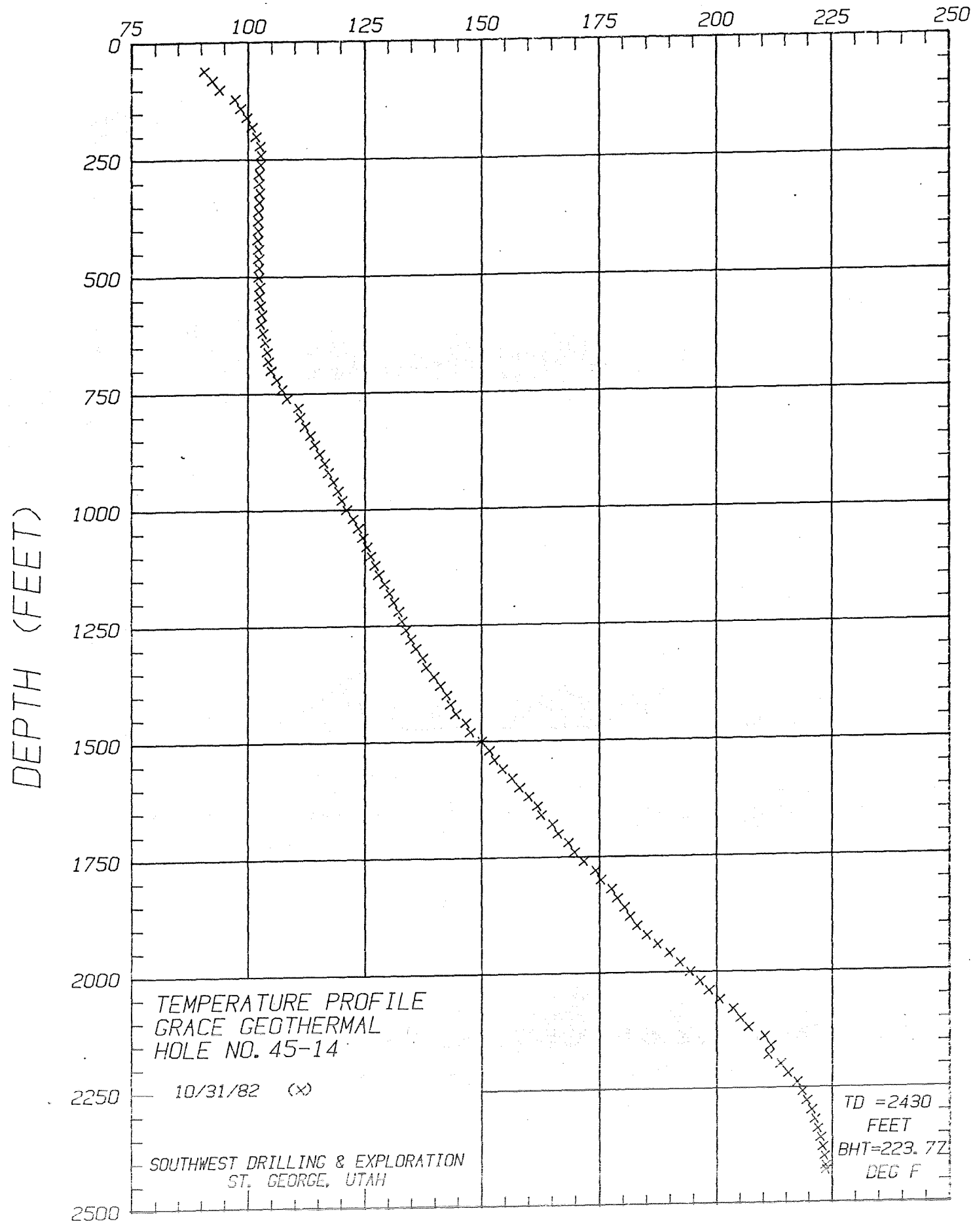
TEMPERATURE PROFILE
HOLE NO. 45-14

10/31/82

SOUTHWEST DRILLING & EXPLORATION
ST. GEORGE, UTAH

TD = 2430
FEET
BHT = 223.72
DEG F

TEMPERATURE (°F)



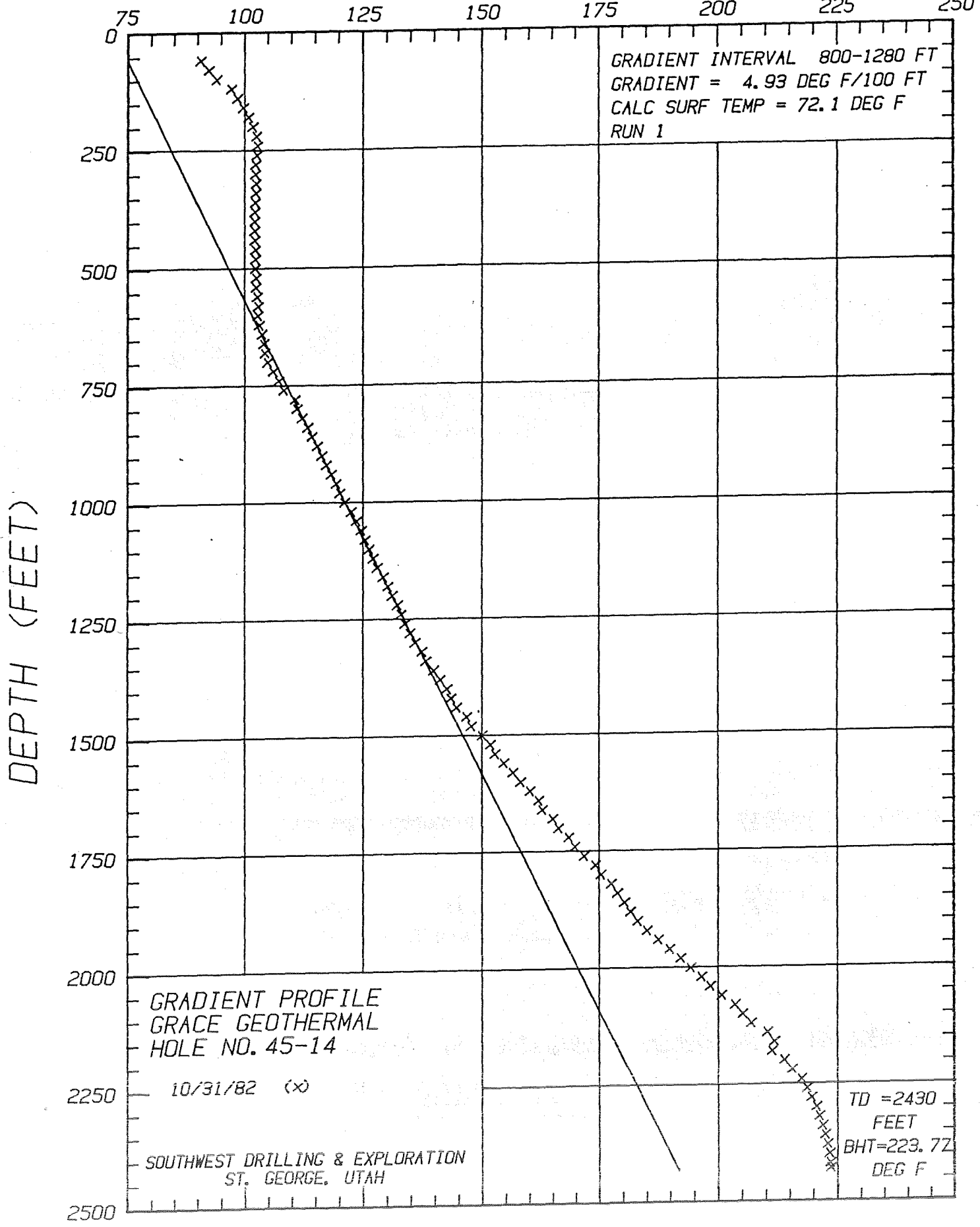
TEMPERATURE PROFILE
GRACE GEOTHERMAL
HOLE NO. 45-14

10/31/82 (x)

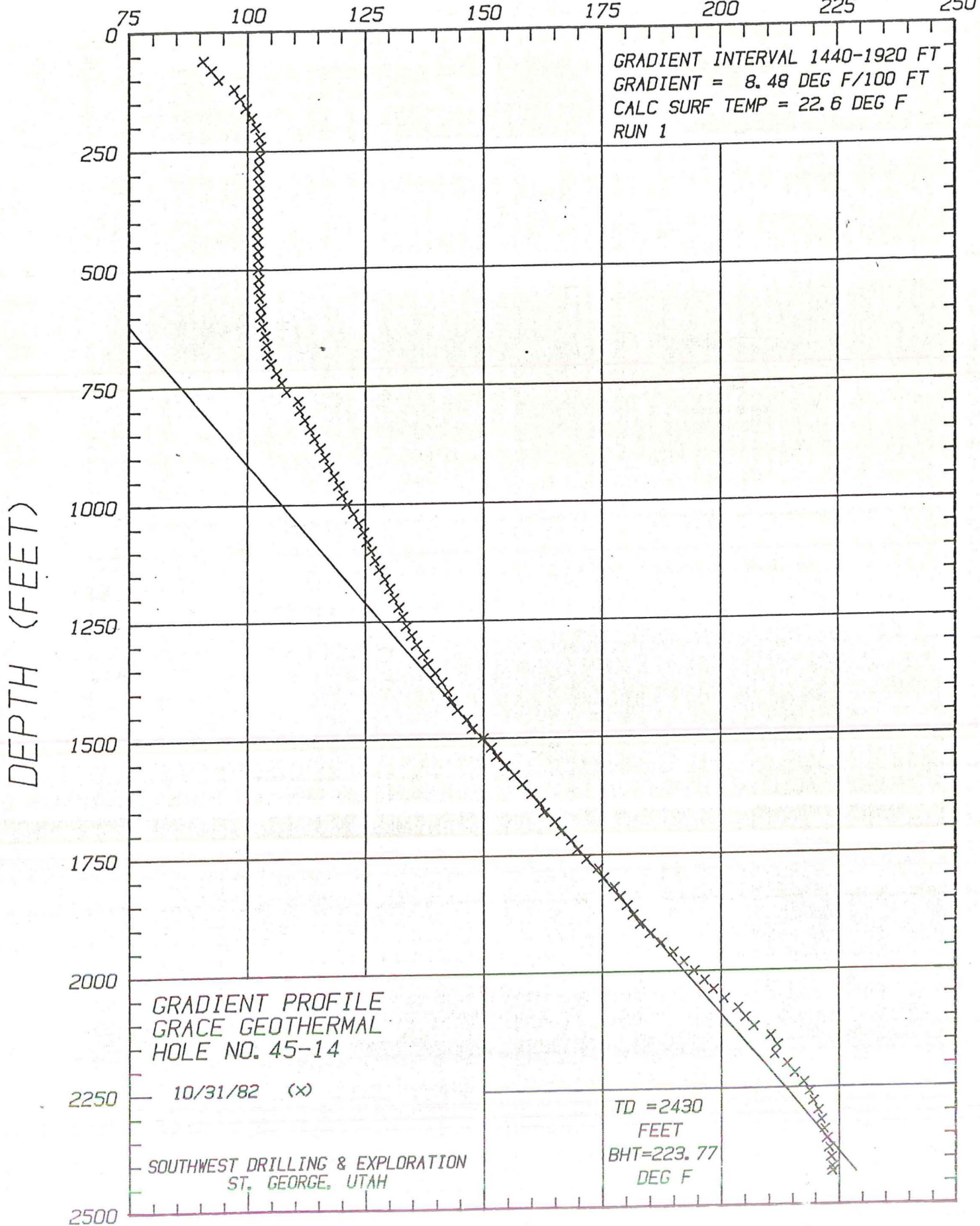
SOUTHWEST DRILLING & EXPLORATION
ST. GEORGE, UTAH

TD = 2430
FEET
BHT = 223.7Z
DEG F

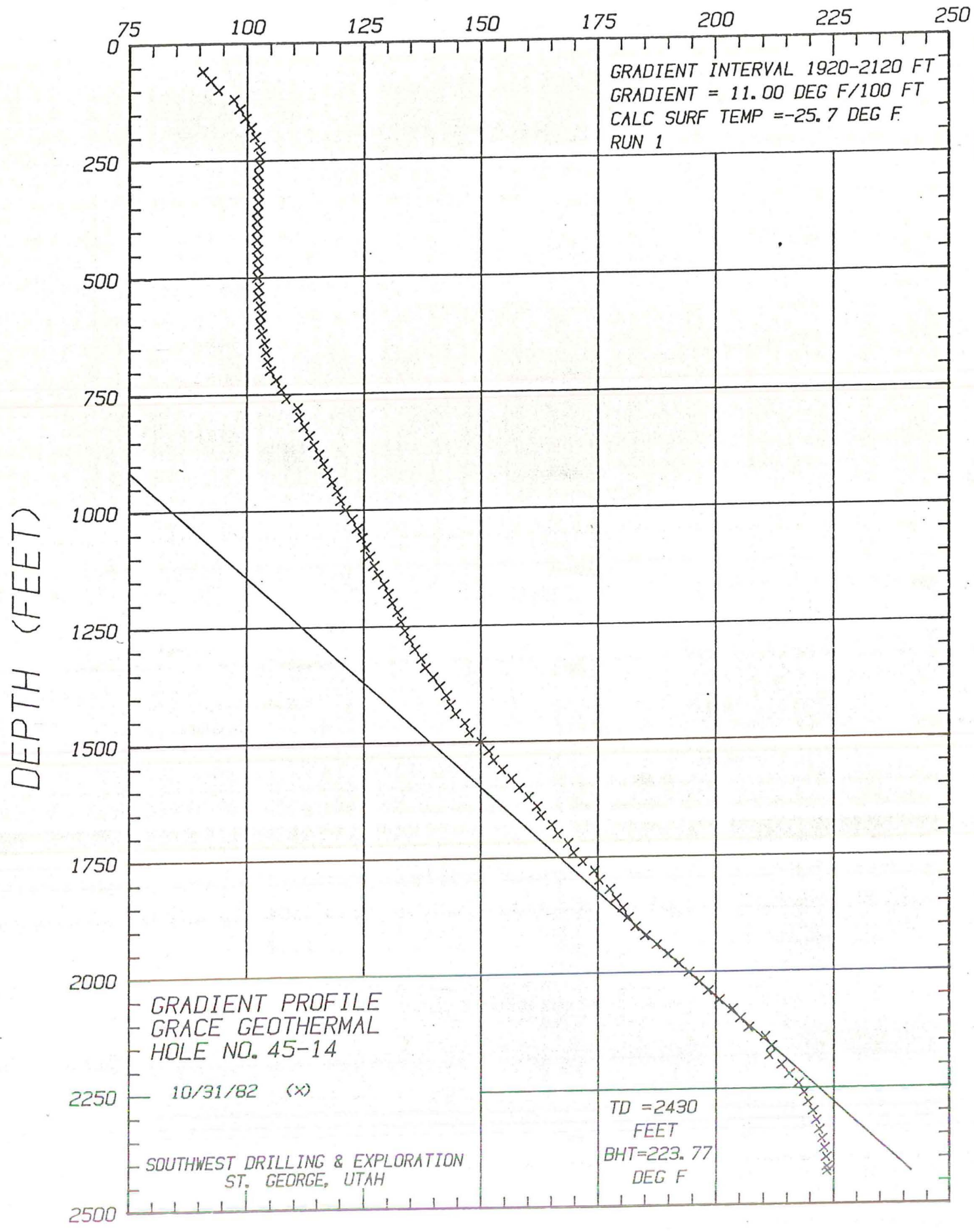
TEMPERATURE (°F)



TEMPERATURE (°F)

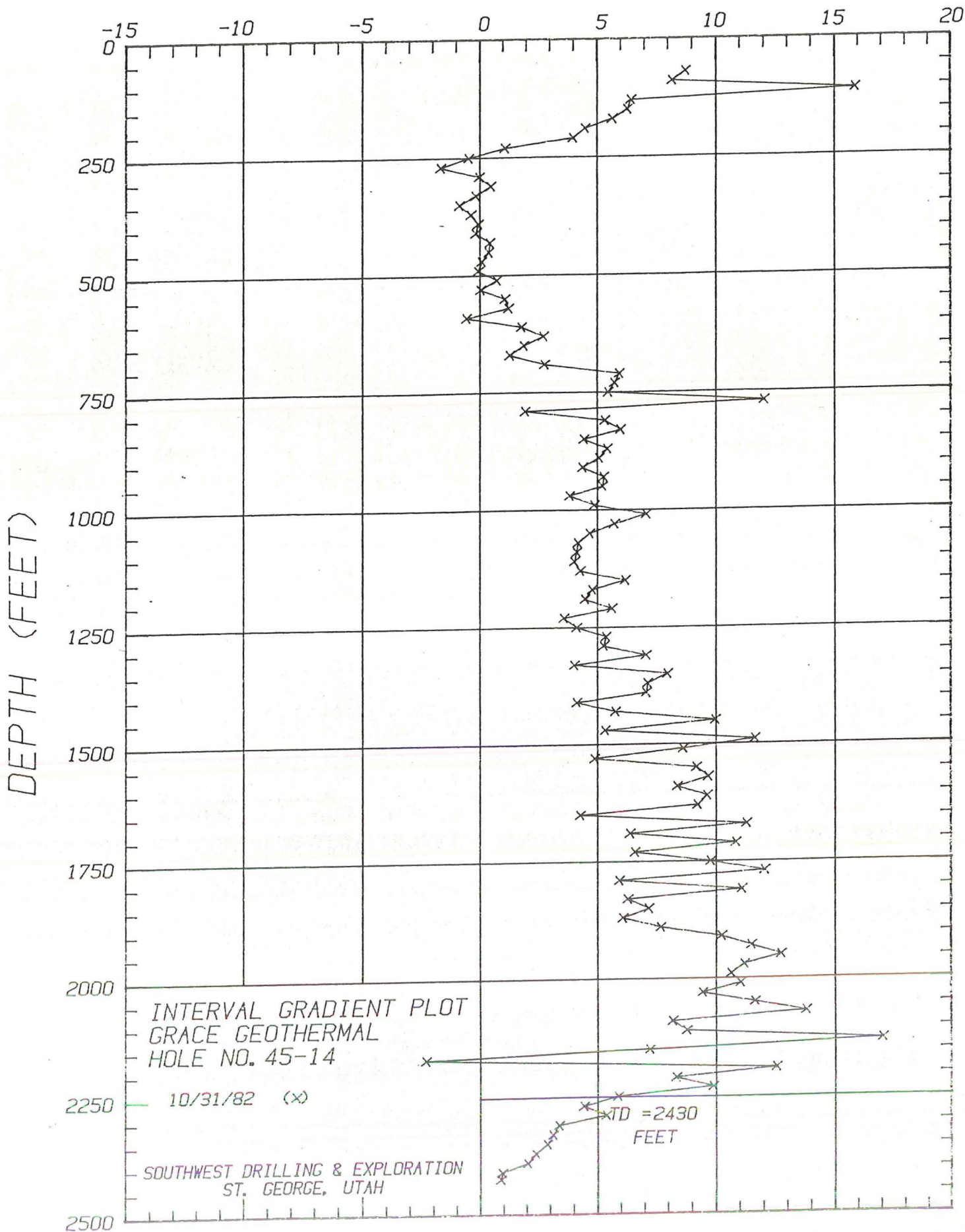


TEMPERATURE (°F)



GRADIENT (°F/100 FT)

NOV 5 REC'D



TEMPERATURE/DEPTH DATA

NOV 5 REC'D

HOLE NO: 45-14

SWDX JOB NO: 23-82

RUN 1

RUN DATE: 10/31/82

DEPTH (FEET)	TEMPERATURE (DEG F)	GRADIENT (DEG F/100 FT)	DEPTH (FEET)	TEMPERATURE (DEG F)	GRADIENT (DEG F/100 FT)
60	90.62		1060	124.73	4.7
80	92.37	8.7	1080	125.57	4.2
100	94.01	8.2	1100	126.40	4.2
120	97.19	15.9	1120	127.21	4.0
140	98.48	6.5	1140	128.07	4.3
160	99.74	6.3	1160	129.31	6.2
180	100.87	5.7	1180	130.27	4.8
200	101.77	4.5	1200	131.17	4.5
220	102.57	4.0	1220	132.30	5.7
240	102.79	1.1	1240	133.02	3.6
260	102.70	-0.5	1260	133.85	4.2
280	102.37	-1.6	1280	134.93	5.4
300	102.37	0.0	1300	135.99	5.3
320	102.47	.5	1320	137.41	7.1
340	102.44	-0.1	1340	138.22	4.0
360	102.27	-0.9	1360	139.82	8.0
380	102.20	-0.3	1380	141.25	7.1
400	102.19	-0.0	1400	142.67	7.1
420	102.16	-0.1	1420	143.50	4.2
440	102.25	.4	1440	144.66	5.8
460	102.33	.4	1460	146.66	10.0
480	102.35	.1	1480	147.73	5.3
500	102.34	-0.1	1500	150.06	11.7
520	102.49	.8	1520	151.79	8.6
540	102.50	.1	1540	152.77	4.9
560	102.72	1.1	1560	154.61	9.2
580	102.97	1.2	1580	156.55	9.7
600	102.86	-0.6	1600	158.23	8.4
620	103.22	1.8	1620	160.16	9.7
640	103.77	2.7	1640	162.01	9.2
660	104.15	1.9	1660	162.87	4.3
680	104.41	1.3	1680	165.13	11.3
700	104.97	2.8	1700	166.41	6.4
720	106.16	6.0	1720	168.58	10.8
740	107.31	5.7	1740	169.90	6.6
760	108.41	5.5	1760	171.86	9.8
780	110.82	12.0	1780	174.27	12.1
800	111.21	1.9	1800	175.46	6.0
820	112.28	5.3	1820	177.68	11.1
840	113.48	6.0	1840	178.94	6.3
860	114.37	4.4	1860	180.38	7.2
880	115.46	5.4	1880	181.60	6.1
900	116.48	5.1	1900	183.14	7.7
920	117.36	4.4	1920	185.19	10.3
940	118.42	5.3	1940	187.49	11.5
960	119.47	5.3	1960	190.04	12.7
980	120.24	3.8	1980	192.28	11.2
1000	121.22	4.9	2000	194.41	10.7
1020	122.64	7.1	2020	196.62	11.0
1040	123.79	5.8	2040	198.51	9.4

SOUTHWEST DRILLING & EXPLORATION, INC.
ST. GEORGE, UTAH

HOLE NO: 45-14
SWDX JOB NO: 23-82

RUN 1

RUN DATE: 10/31/82

DEPTH (FEET)	TEMPERATURE (DEG F)	GRADIENT (DEG F/100 FT)
2060	200.84	11.7
2080	203.60	13.8
2100	205.24	8.2
2120	207.00	8.8
2140	210.41	17.1
2160	211.86	7.2
2180	211.40	-2.3
2200	213.91	12.6
2220	215.58	8.3
2240	217.56	9.9
2260	218.74	5.9
2280	219.63	4.4
2300	220.71	5.4
2320	221.39	3.4
2340	222.02	3.2
2360	222.60	2.9
2380	223.08	2.4
2400	223.49	2.1
2420	223.68	.9
2430	223.77	.9